

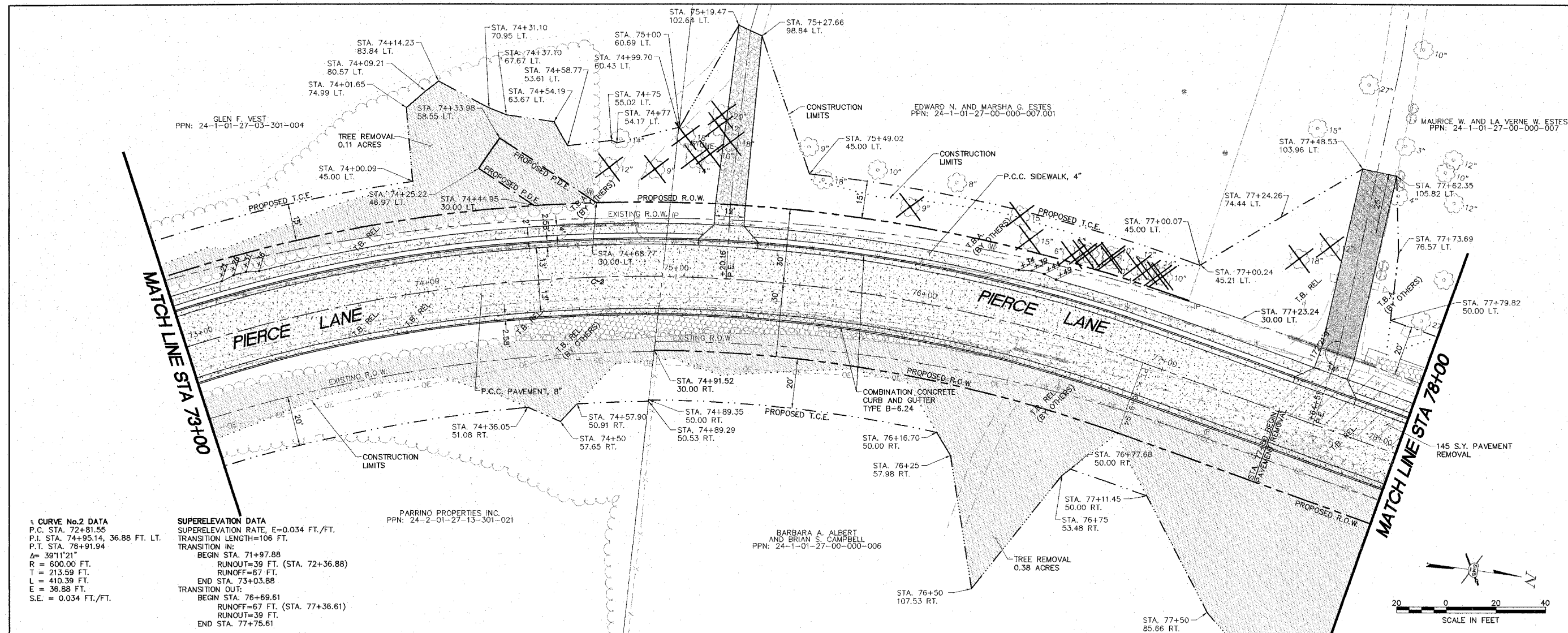
REVISIONS

SMS Sheppard, Morgan & Schwaab, Inc.
 CONSULTING ENGINEERS AND LAND SURVEYORS
 ENGINEERS

315 Main Street, P.O. Box E, Moline, IL 62450
 Phone: 618/452-9155 Fax: 618/452-9156
 Email: sms@smsmoline.com
 11 Central Industrial Drive, Granite City, IL 62040 Phone: 618/877-5200 Email: mgs@smsmoline.com

PIERCE LANE IMP. (PHASE 3 AND 4)-GODFREY, ILLINOIS
 FAU ROUTE 8985
 05-00001-03-PV (PHASE 3) / 06-00001-04-BR (PHASE 4)
 PLAN AND PROFILE - PAVING PLAN

DWG. NO.	PRC PH3 ROAD PP.DWG
REF. BK.	PG.
JOB NO.	436613
DSN. BY:	SJW/DDI
CHK. BY:	SJW
DATE:	FEBRUARY, 2008
SCALE:	HORIZ. 1"=20' VERT. 1"=5'
SHEET	6 OF 61

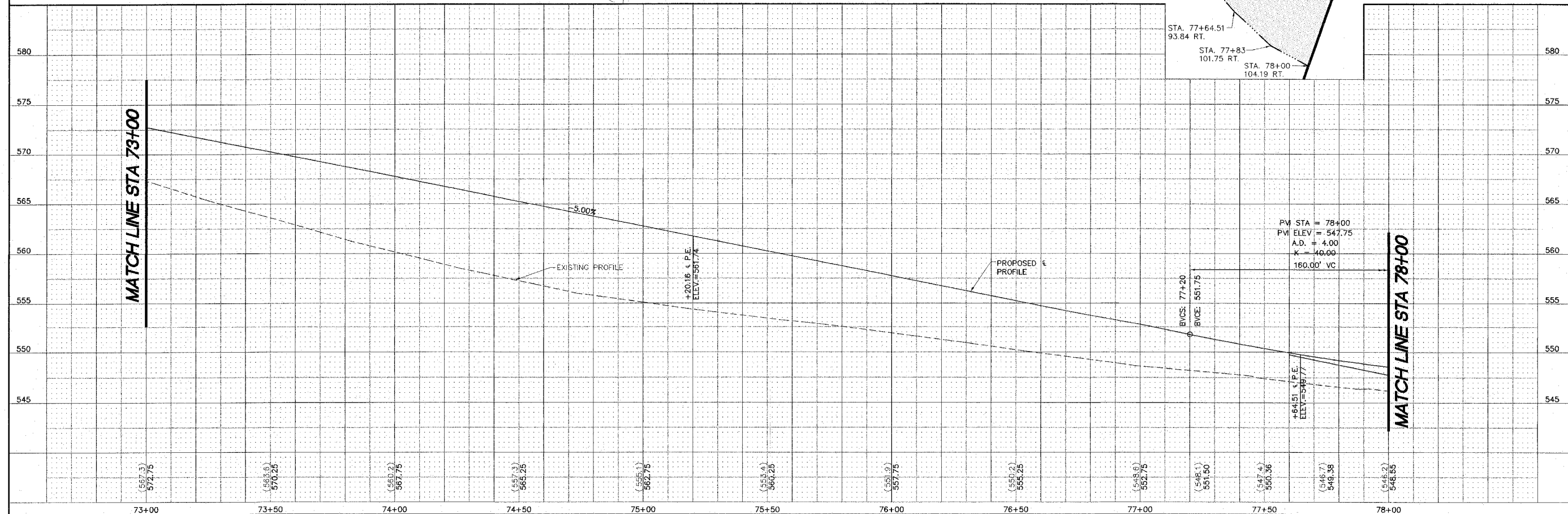
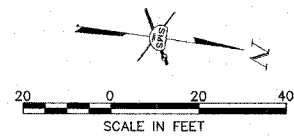


1 CURVE No.2 DATA
 P.C. STA. 72+81.55
 P.I. STA. 74+95.14, 36.88 FT. LT.
 P.T. STA. 76+91.94
 $\Delta = 39^{\circ}11'21''$
 R = 600.00 FT.
 T = 213.59 FT.
 L = 410.39 FT.
 E = 36.88 FT.
 S.E. = 0.034 FT./FT.

SUPERELEVATION DATA
 SUPERELEVATION RATE, E=0.034 FT./FT.
 TRANSITION LENGTH=106 FT.
 TRANSITION IN:
 BEGIN STA. 71+97.88
 RUNOUT=39 FT. (STA. 72+36.88)
 RUNOFF=67 FT.
 END STA. 73+03.88
 TRANSITION OUT:
 BEGIN STA. 76+69.61
 RUNOFF=67 FT. (STA. 77+36.61)
 RUNOUT=39 FT.
 END STA. 77+75.61

PARRINO PROPERTIES INC.
 PPN: 24-2-01-27-13-301-021

BARBARA A. ALBERT
 AND BRIAN S. CAMPBELL
 PPN: 24-1-01-27-00-000-006



PV STA = 78+00
 PVI ELEV = 547.75
 A.D. = 4.00
 K = 40.00
 160.00' VC

BVC: 77+20
 ELEV: 551.75

+64.51 S.P.E.
 ELEV=548.77

MATCH LINE STA 73+00

MATCH LINE STA 78+00