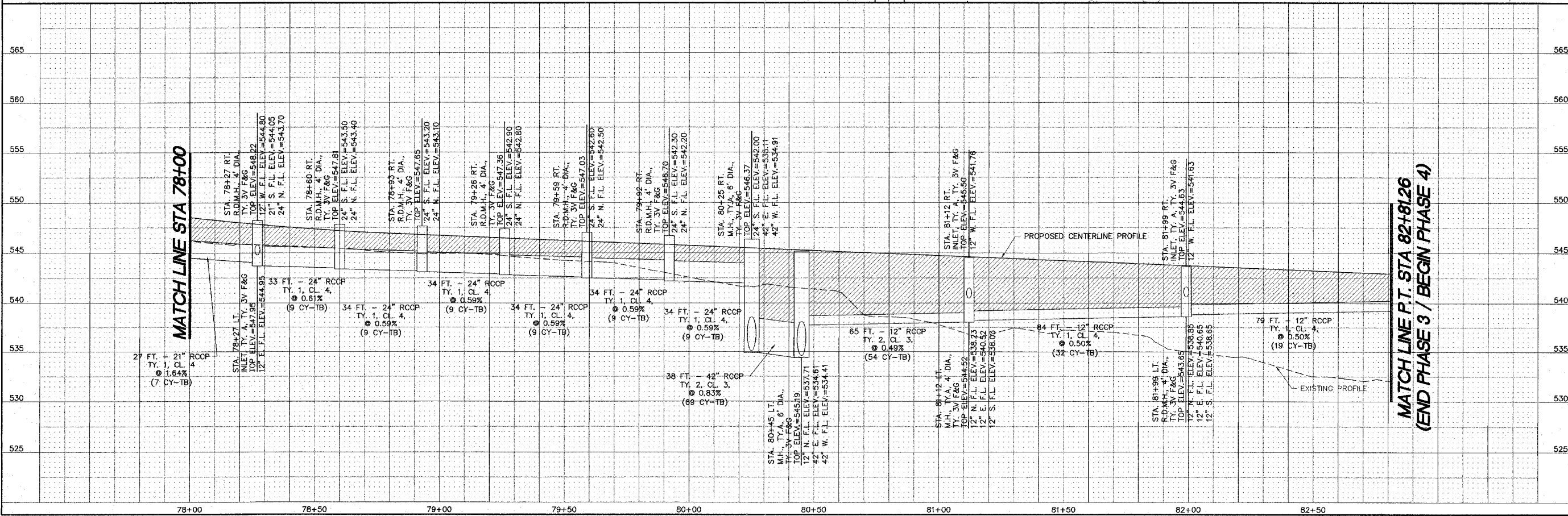


WATERWAY INFORMATION
 DRAINAGE AREA = 29.9 ACRES
 EXISTING OPENING = 9.6 SQ. FT. (42" CMP)
 DESIGN OPENING = 9.6 SQ. FT. (42" RCCP)
 DESIGN DISCHARGE (30 YEAR) = 56.9 CFS
 EXISTING HEADWATER ELEVATION (30 YEAR) = 538.55 (Q=42 CFS)
 DESIGN HEADWATER ELEVATION (30 YEAR) = 538.71
 100 YEAR DISCHARGE = 76.8 CFS
 EXISTING HEADWATER ELEVATION (100 YEAR) = 539.43 (Q=56.7 CFS)
 DESIGN HEADWATER ELEVATION (100 YEAR) = 539.49
 OVERTOPPING ELEVATION = 545.45
 EXISTING OVERTOPPING DISCHARGE = 77.4 CFS
 PROPOSED OVERTOPPING DISCHARGE = 154.2 CFS

REVISIONS

SMS Sheppard, Morgan & Schwaab, Inc.
 CONSULTING ENGINEERS AND LAND SURVEYORS
 270 Millner Street, P.O. Box E, Alton, IL 62002, 6184822755, E-mail: sm@smengineers.com
 20 Central Industrial Drive, Granite City, IL 62040, 6183776700, E-mail: mail@smengineers.com

PIERCE LANE IMP. (PHASE 3 AND 4)-GODFREY, ILLINOIS
 FAU ROUTE 8985
 05-00001-03-PV (PHASE 3) / 06-00001-04-BR (PHASE 4)
 PLAN AND PROFILE - STORM PLAN



DWG. NO.
 PRC PH3 PP STORM.DWG
 REF. BK. PG.
 JOB NO. 436613
 DSN. BY: SJW/007
 DWN. BY: RCS
 CHK. BY: SJW
 DATE: FEBRUARY, 2008
 SCALE: HORIZ. 1"=20'
 VERT. 1"=5'
 SHEET 13 OF 61