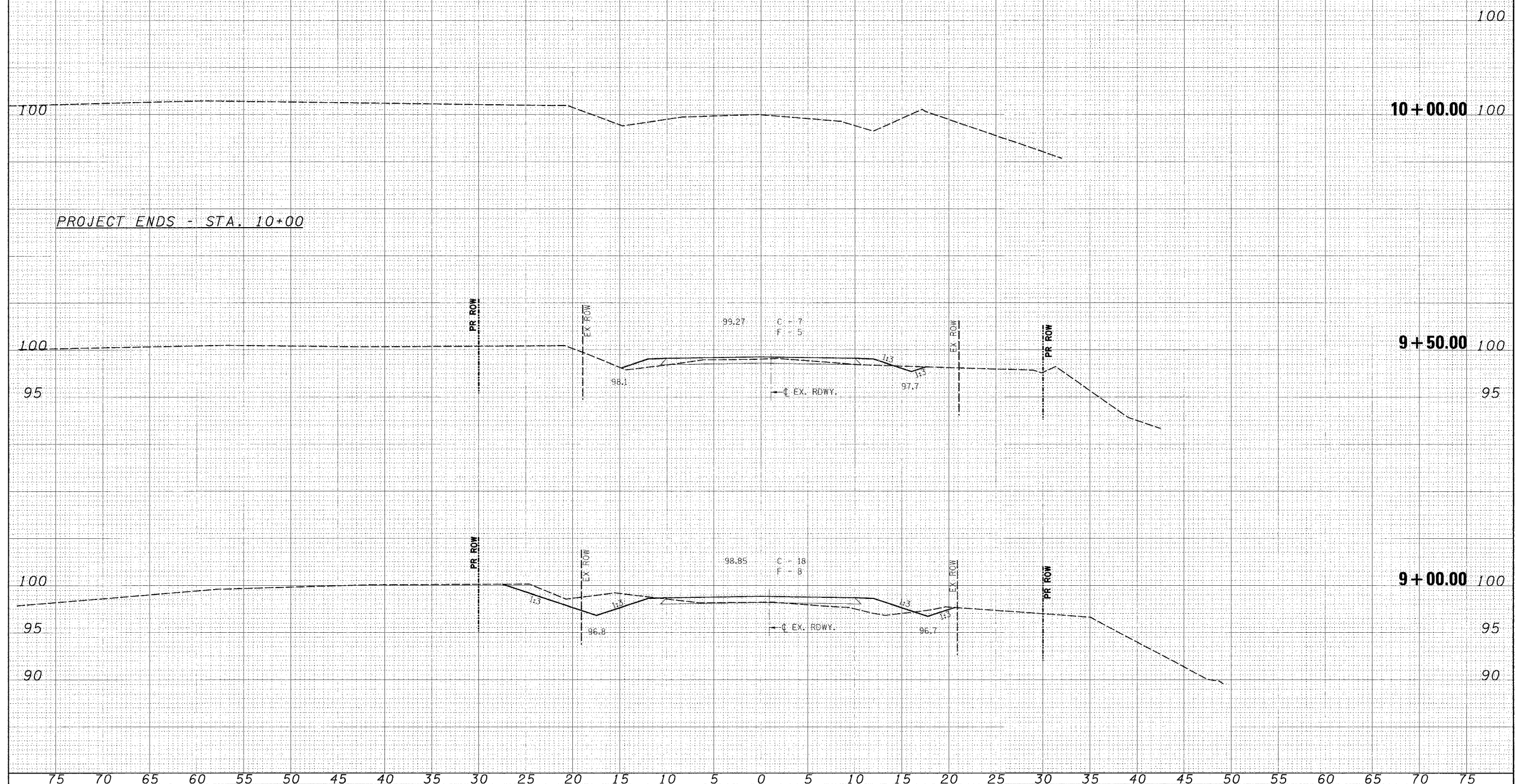


75 70 65 60 55 50 45 40 35 30 25 20 15 10 5 0 5 10 15 20 25 30 35 40 45 50 55 60 65 70 75

F.A. RTE.	SECTION	COUNTY	TOTAL SHEETS	SHEET NO.
77	05-09111-00-BR	JERSEY	10	10
CONTRACT NO. 97344				
FED. ROAD DIST. NO. ILLINOIS FED. AID PROJECT				

FINAL SHEET	DATE
NO. 1	
DESIGNED BY	DATE
DRAWN BY	DATE
CHECKED BY	DATE
DATE	

ORIGINAL SHEET	DATE
NO. 1	
DESIGNED BY	DATE
DRAWN BY	DATE
CHECKED BY	DATE
DATE	



PROJECT ENDS - STA. 10+00

75 70 65 60 55 50 45 40 35 30 25 20 15 10 5 0 5 10 15 20 25 30 35 40 45 50 55 60 65 70 75

FILE NAME	USER NAME	DESIGNED	REVISED
SPJL18	BUSPER	-	-
		DRAWN	REVISED
		-	-
		CHECKED	REVISED
		-	-
		DATE	REVISED
		-	-

DESIGNED	REVISED
DRAWN	REVISED
CHECKED	REVISED
DATE	REVISED

DESIGNED	REVISED
DRAWN	REVISED
CHECKED	REVISED
DATE	REVISED

Allen Henderson & Associates, Inc.
 Civil and Structural Engineers Springfield, IL.
 62703 Phone: (217)544-8033 IL. Design Firm
 No. 184-001907

CROSS SECTIONS

SCALE: 1" = 5' SHEET NO. 10 OF 10 SHEETS STA. 9+00.00 TO STA. 10+50.00

F.A. RTE.	SECTION	COUNTY	TOTAL SHEETS	SHEET NO.
77	05-09111-00-BR	JERSEY	10	10
CONTRACT NO. 97344				
FED. ROAD DIST. NO. ILLINOIS FED. AID PROJECT				