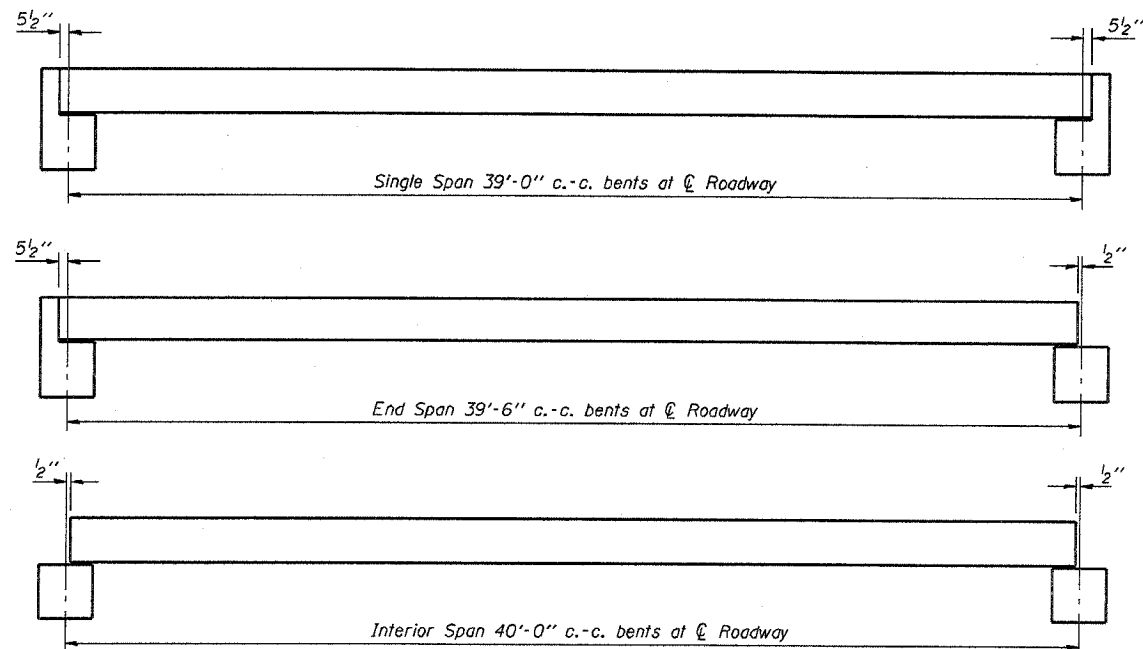
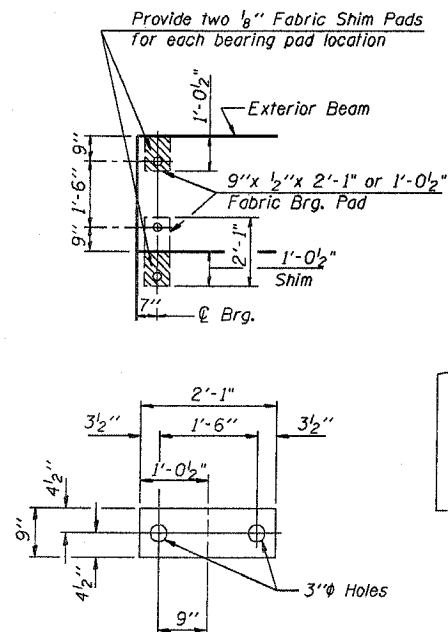


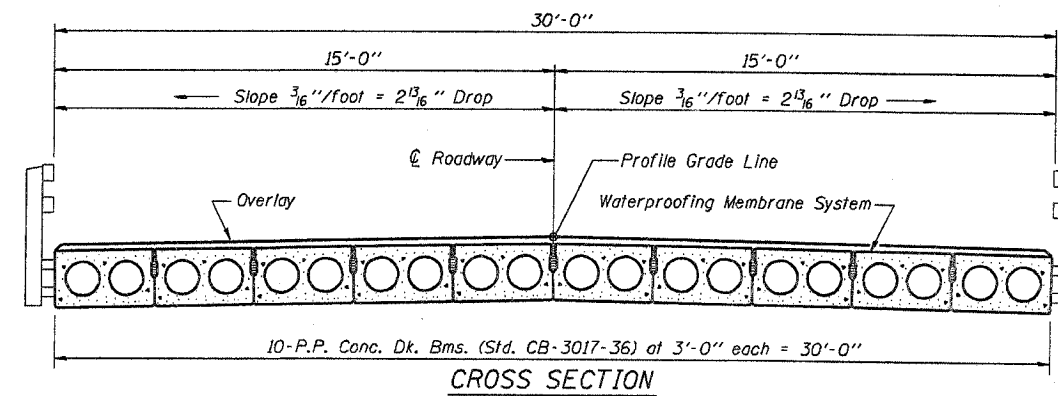
SECTION NO.	COUNTY HIGHWAY	COUNTY	SHEET OF SHEETS
00-00261-02-BR	83	ST. CLAIR	6 OF 14
FHWA REG. NO.	ILLINOIS	PROJ. BROS-163(30)	
FEDERAL AID PROJECT	CONTRACT # 97346		
SUPERSTRUCTURE DETAILS			



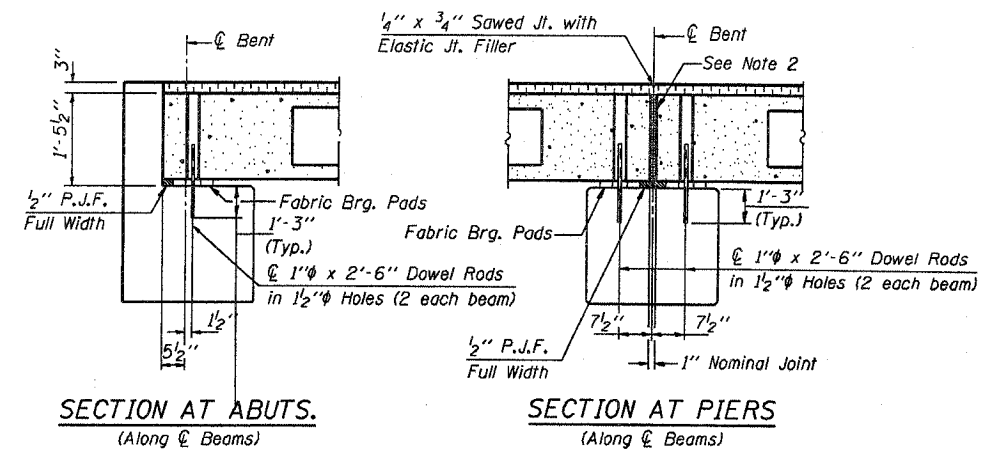
TYPICAL ELEVATIONS



1/2" FABRIC BRG. PAD DETAILS

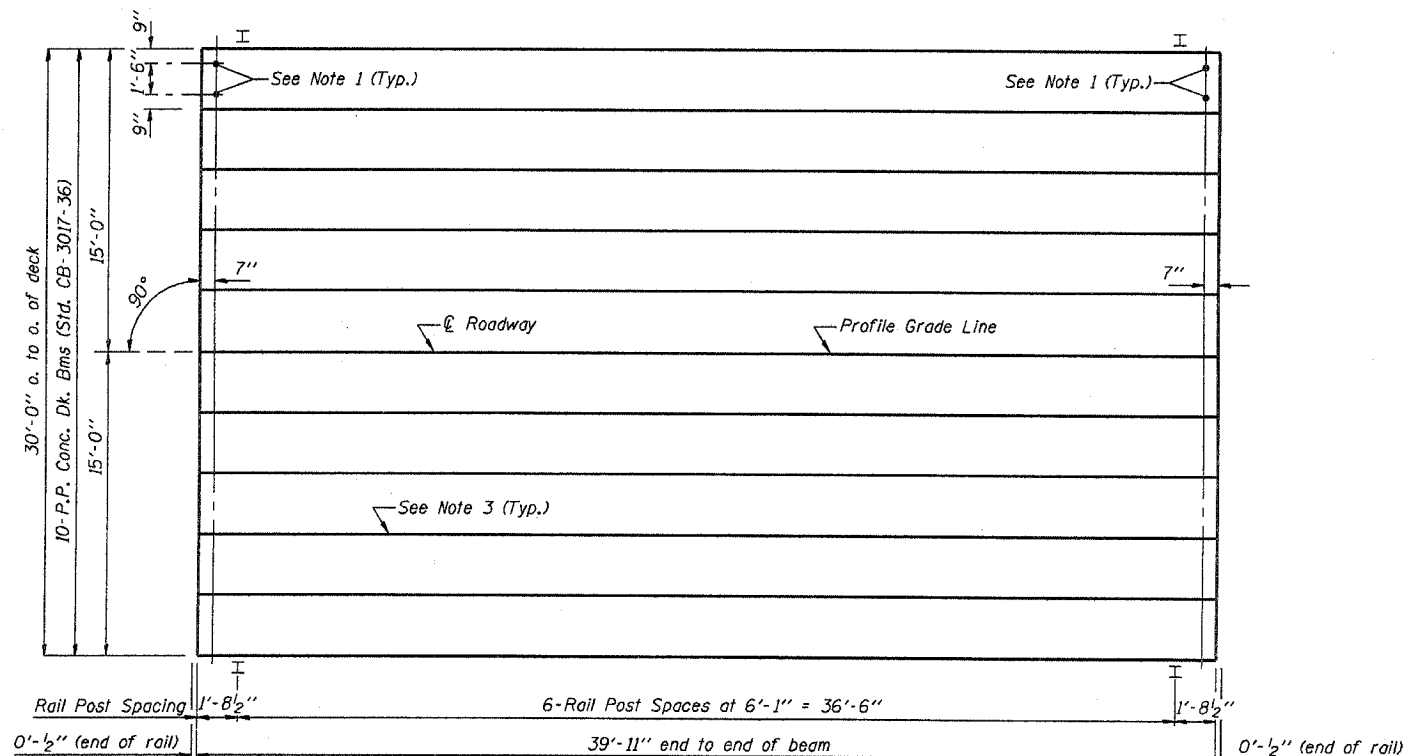


CROSS SECTION



SECTION AT ABUTS.
(Along centerline of Beams)

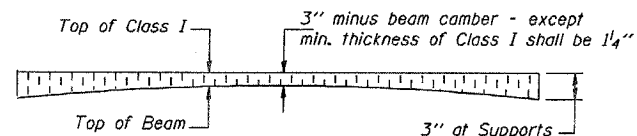
SECTION AT PIERS
(Along centerline of Beams)



PLAN

NOTES

1. After beams have been erected, holes shall be drilled into substructure and anchor dowels placed. Dowel holes shall be filled with non-shrink grout to top of beam and allowed to cure min. 24 hrs. prior to grouting the shear keys.
2. Nominal 1" joint at centerline of Pier shall be filled with non-shrink grout.
3. Longitudinal keys shall be grouted.



PROFILE OF OVERLAY

QUANTITIES FOR ONE SPAN

P.P. Conc. Dk. Bm. 17" Dp.	1200 Sq. Ft.
Steel Railing	80 Ft.
Waterproofing Membrane System	133.3 Sq. Yds.
Portland Cement Mortar	360 Ft.
Fairing Course	

Note: Quantity of overlay for one span = 18.1 Tons

P.P.C. DECK BEAM SUPERSTRUCTURE			
30' RDWY.	17" BMS.	40' SPAN	0° SKEW
STANDARD CS-3017-40			

Illinois Department of Transportation

PASSED APRIL 4, 2005
Thomas J. Semagala
 Engineer of Bridge Design

APPROVED APRIL 4, 2005
Ralph E. Anderson
 Engineer of Bridges and Structures

ISSUED 4-4-2005