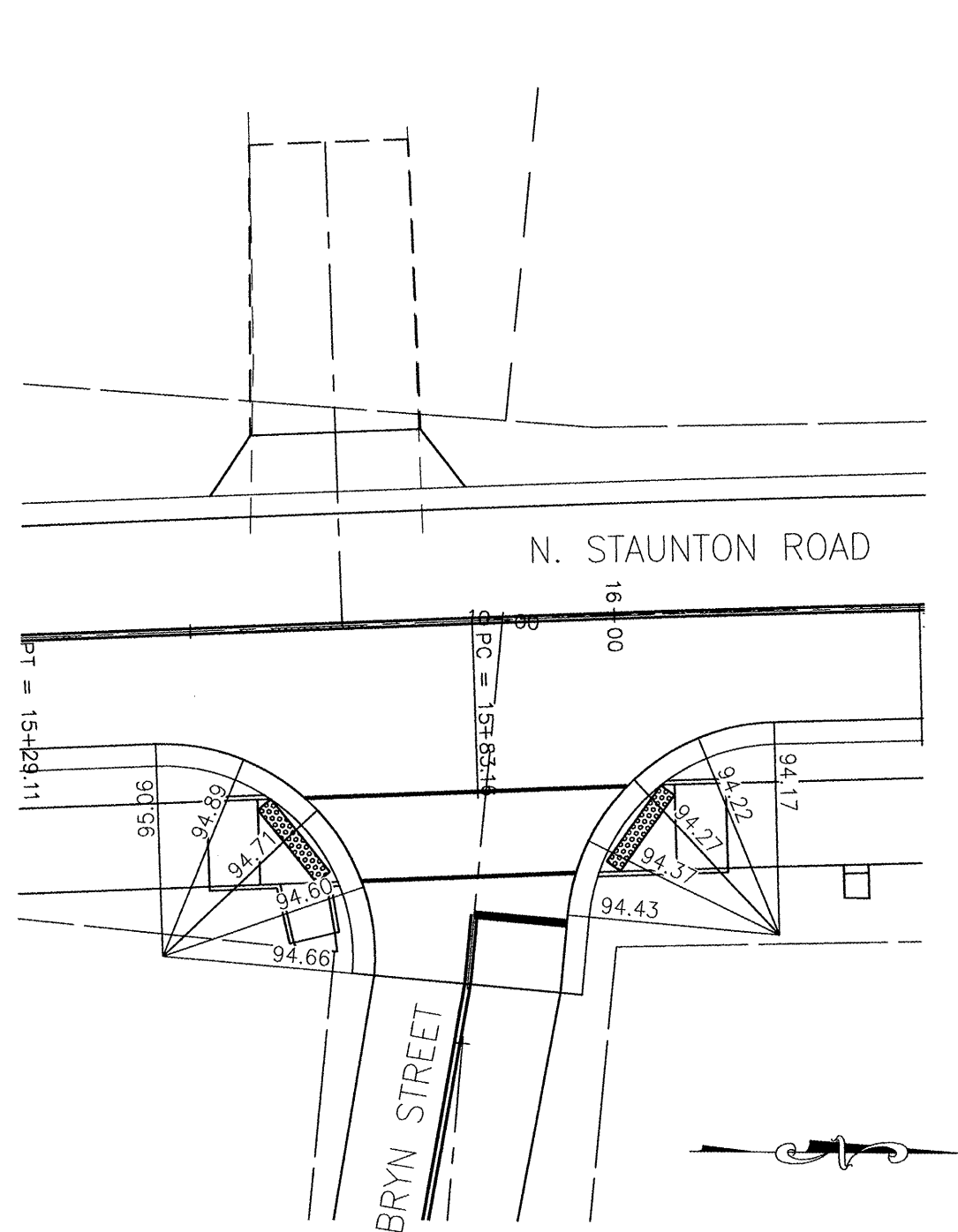
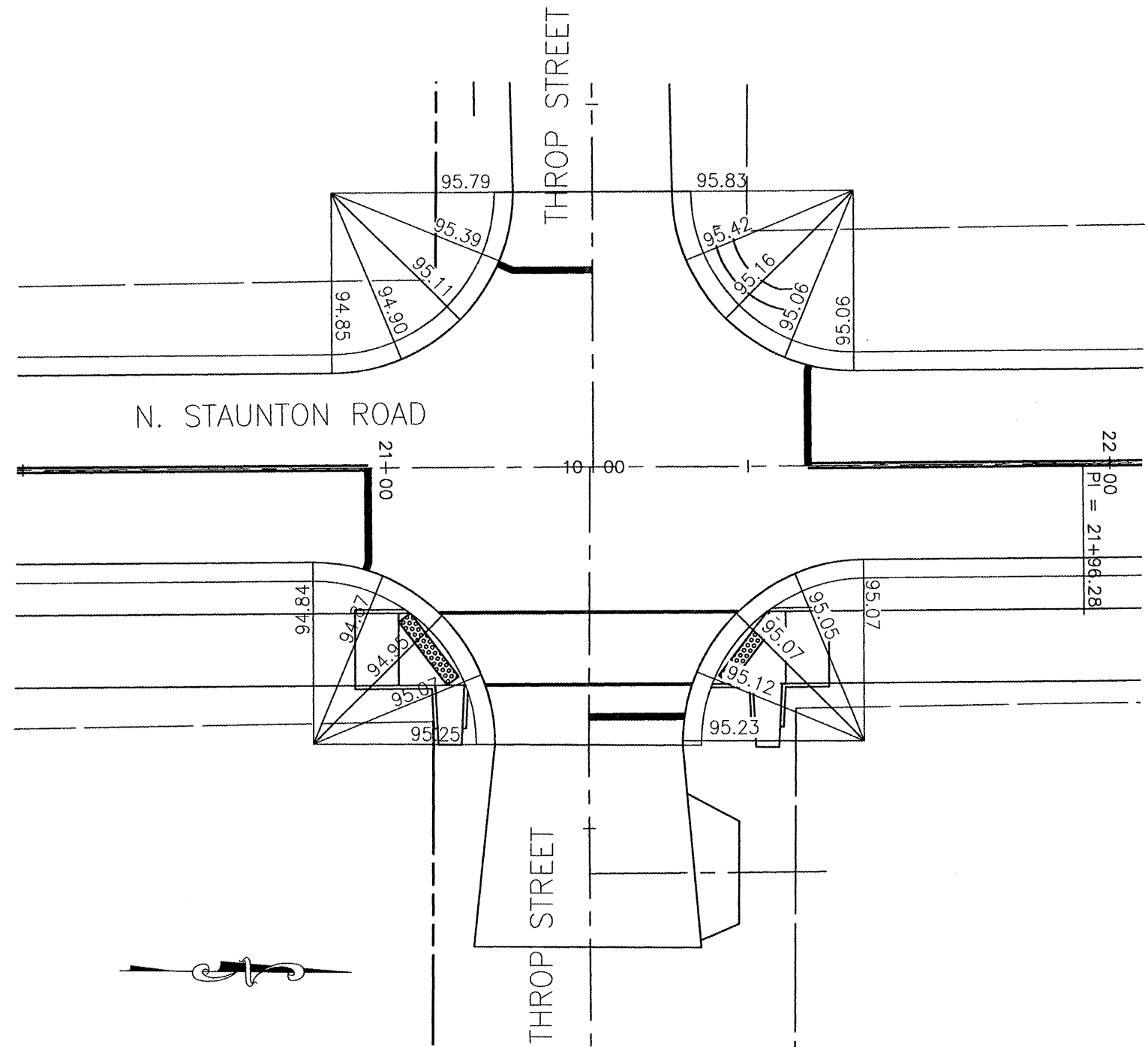


FILE ROUTE	SECTION	COUNTY	TOTAL SHEETS	SHEET NO.
9.392	05-00024-00-PV	MADISON	B1	39
STA.		TO STA.		
INTERSECTION DETAILS				

CONTRACT NO. 97347



NOTE: ALL ELEVATIONS ARE GIVEN AT THE EDGE OF PAVEMENT



REVISIONS	
NAME	DATE

INTERSECTION WARPING DETAILS
 NORTH STAUNTON ROAD IMPROVEMENTS
 CITY OF TROY
 MADISON COUNTY, ILLINOIS