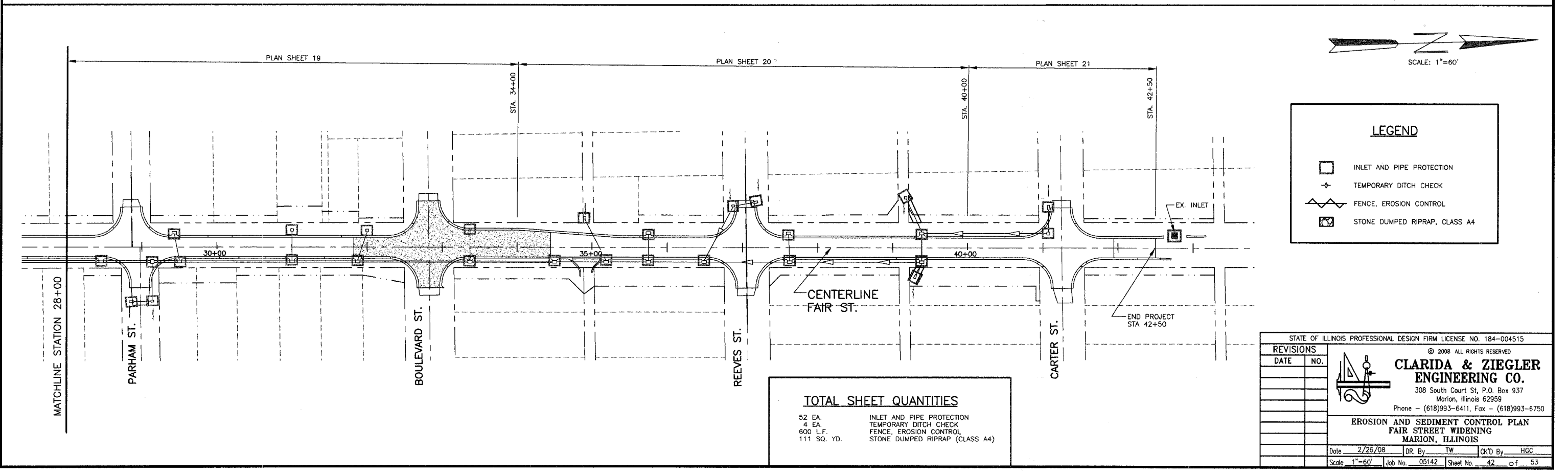
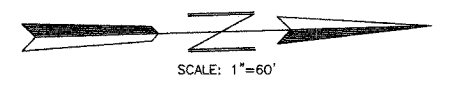
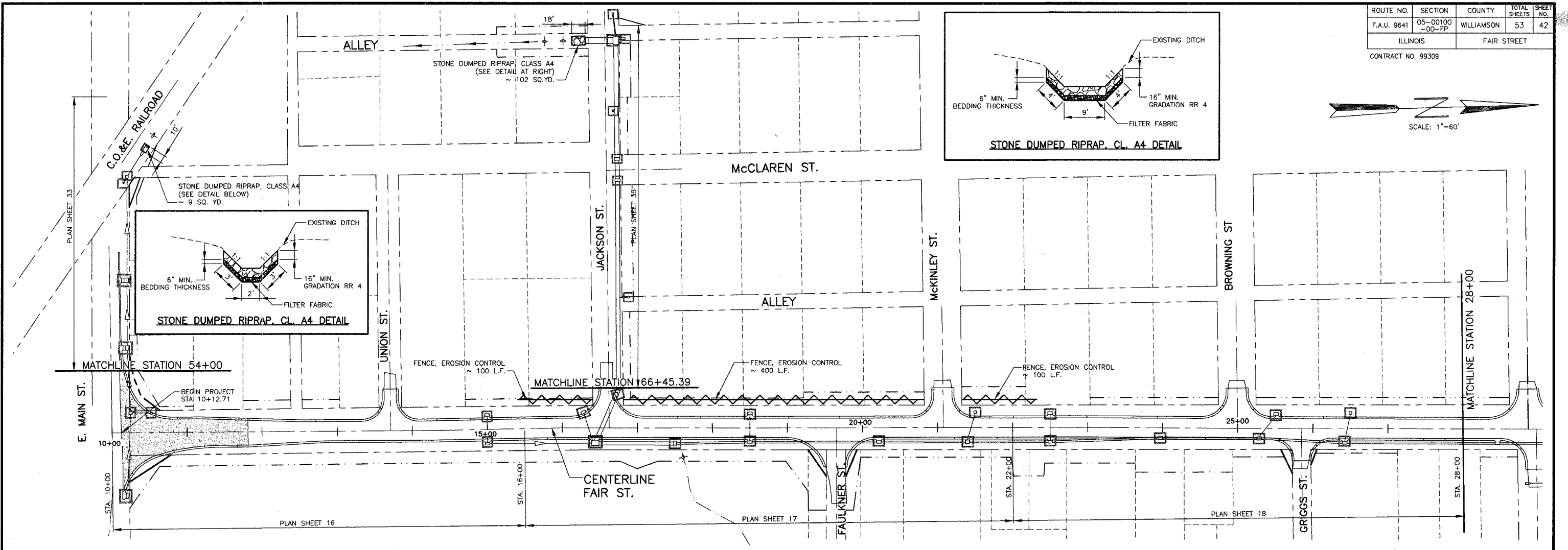
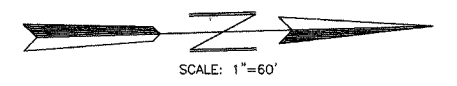
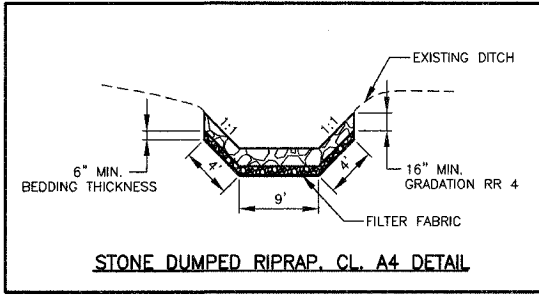


ROUTE NO.	SECTION	COUNTY	TOTAL SHEETS	SHEET NO.
F.A.U. 9641	05-00100 -00-FP	WILLIAMSON	53	42
ILLINOIS		FAIR STREET		

CONTRACT NO. 99309



LEGEND	
	INLET AND PIPE PROTECTION
	TEMPORARY DITCH CHECK
	FENCE, EROSION CONTROL
	STONE DUMPED RIPRAP, CLASS A4

TOTAL SHEET QUANTITIES	
52 EA.	INLET AND PIPE PROTECTION
4 EA.	TEMPORARY DITCH CHECK
600 L.F.	FENCE, EROSION CONTROL
111 SQ. YD.	STONE DUMPED RIPRAP (CLASS A4)

STATE OF ILLINOIS PROFESSIONAL DESIGN FIRM LICENSE NO. 184-004515

© 2008 ALL RIGHTS RESERVED

**CLARIDA & ZIEGLER ENGINEERING CO.**  
 308 South Court St, P.O. Box 937  
 Marion, Illinois 62959  
 Phone - (618)993-6411, Fax - (618)993-6750

**EROSION AND SEDIMENT CONTROL PLAN**  
**FAIR STREET WIDENING**  
**MARION, ILLINOIS**

REVISIONS	DATE	NO.

Date: 2/26/08 DR. By: TW CK'D By: HGC  
 Scale: 1"=60' Job No.: 05142 Sheet No.: 42 of 53

P:\05142\PLANS\12 Erosion Control.dwg, 4/9/2008 3:47:49 PM, 1:1