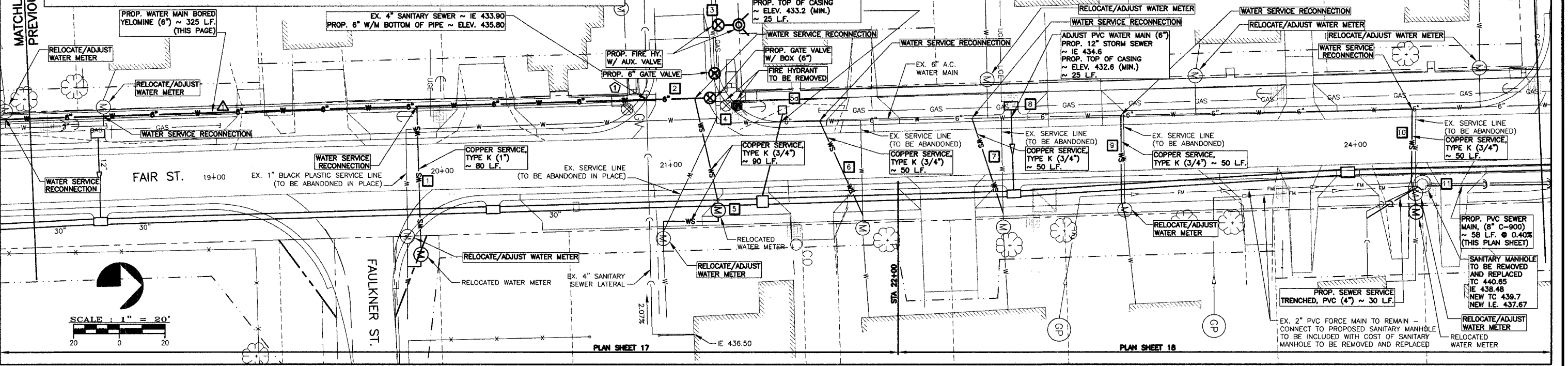


SUMMARY OF QUANTITIES (PLAN SHEET 17)

- 325 L.F. WATER MAIN BORED, YELOMINE (6")
- 325 L.F. LOCATOR WIRE
- 5 EA. WATER SERVICE RECONNECTIONS
- 4 EA. RELOCATE/ADJUST WATER METER
- 140 L.F. COPPER SERVICE, TYPE K (3/4")
- 80 L.F. COPPER SERVICE, TYPE K (1")
- 1 EA. FIRE HY. TO BE REMOVED
- 1 EA. FIRE HYDRANT W/ AUX. VALVE
- 2 EA. GATE VALVE W/ BOX, (6")
- 1 EA. ADJUST EX. WATER MAIN (6")
- 141 TON TRENCH BACKFILL, WATERMAIN

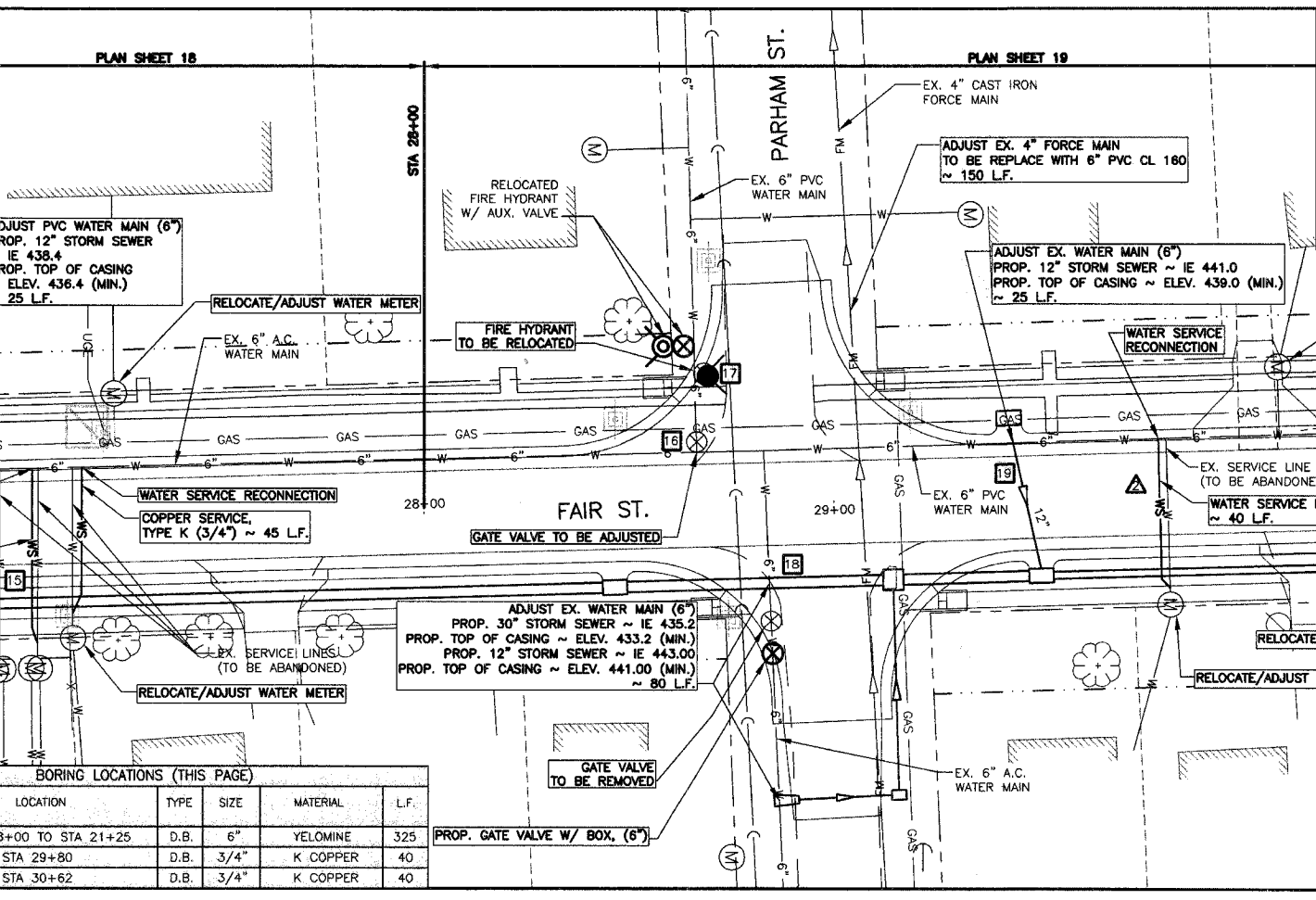
SUMMARY OF QUANTITIES (PLAN SHEET 18)

- 2 EA. M.H. TO BE REMOVED AND REPLACED
- 325 L.F. COPPER SERVICE, TYPE K (3/4")
- 90 L.F. COPPER SERVICE, TYPE K (1")
- 3 EA. ADJUST EX. WATER MAIN (6")
- 30 L.F. SEWER SERVICE TRENCHED, PVC (4")
- 8 EA. RELOCATE/ADJUST WATER METER
- 8 EA. WATER SERVICE RECONNECTIONS
- 86 L.F. PVC SEWER MAIN, (8")
- 1 EA. GATE VALVE W/ BOX, (6")
- 185 TON TRENCH BACKFILL, WATERMAIN



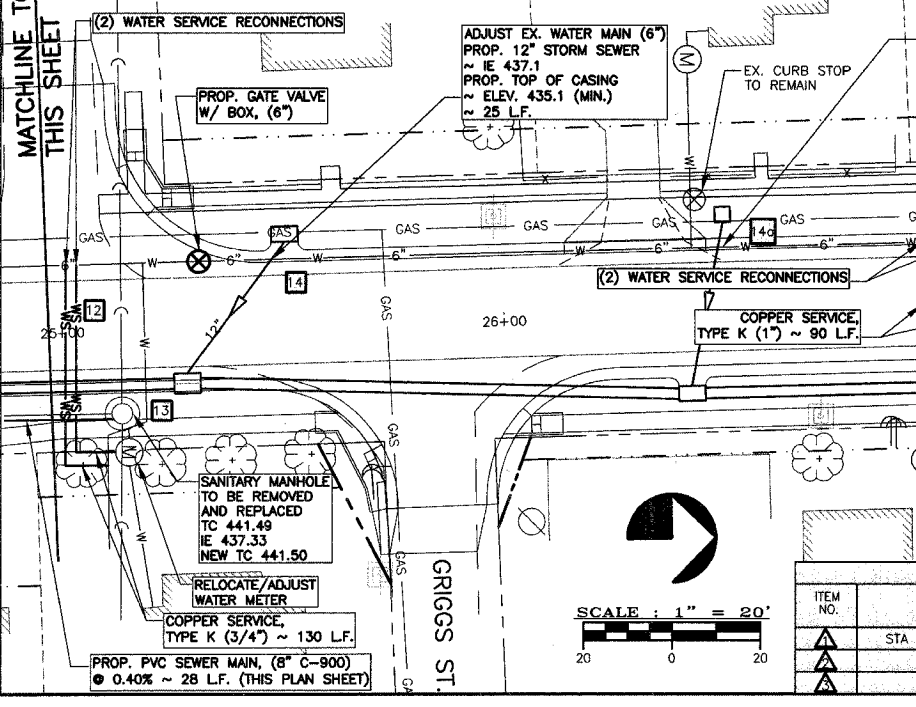
TRENCH BACKFILL, WATERMAIN

ITEM NO.	ITEM	TONS	ITEM NO.	ITEM	TONS	ITEM NO.	ITEM	TONS
1	SERVICE & METER	35	8	ADJUST W/M	20	15	(3) SERVICES	30
2	OPEN CUT	20	9	SERVICE	20	16	G.V.	2
3	FIRE HY.	2	10	SERVICE	20	17	FIRE HY. / G.V.	4
4	FIRE HY. / G.V.	4	11	M.H.	6	18	ADJUST W/M	20
5	SERVICE / METER	40	12	(2) SERVICES	25	19	ADJUST W/M	20
5a	ADJUST W/M	20	13	M.H.	4	20	ADJUST W/M	20
6	SERVICE	20	14	ADJUST W/M	20			
7	SERVICE	20	14a	ADJUST W/M	20			



SUMMARY OF QUANTITIES (PLAN SHEET 19)

- 2 EA. WATER SERVICE RECONNECTIONS
- 4 EA. RELOCATE/ADJUST WATER METER
- 80 L.F. WATER SERVICE LINE 3/4" BORED
- 3 EA. ADJUST EX. WATER MAIN (6")
- 1 EA. FIRE HY. TO BE RELOCATED
- 1 EA. GATE VALVES TO BE ADJUSTED
- 1 EA. GATE VALVES TO BE REMOVED
- 1 EA. GATE VALVE W/ BOX, (6")
- 1 EA. FORCE MAIN TO BE ADJUSTED
- 66 TON TRENCH BACKFILL, WATERMAIN



BORING LOCATIONS (THIS PAGE)

ITEM NO.	LOCATION	TYPE	SIZE	MATERIAL	L.F.
▲	STA 18+00 TO STA 21+25	D.B.	6"	YELOMINE	325
▲	STA 29+80	D.B.	3/4"	K COPPER	40
▲	STA 30+62	D.B.	3/4"	K COPPER	40

STATE OF ILLINOIS PROFESSIONAL DESIGN FIRM LICENSE NO. 184-004515
 © 2008 ALL RIGHTS RESERVED
CLARIDA & ZIEGLER ENGINEERING CO.
 308 South Court St, P.O. Box 937
 Marion, Illinois 62959
 Phone - (618)993-6411, Fax - (618)993-6750
 UTILITY PLANS
 FAIR STREET WIDENING
 MARION, ILLINOIS
 Date 2/26/08 DR. By RF CKD By HGC
 Scale 1"=20' Job No. 05142 Sheet No. 47 of 53