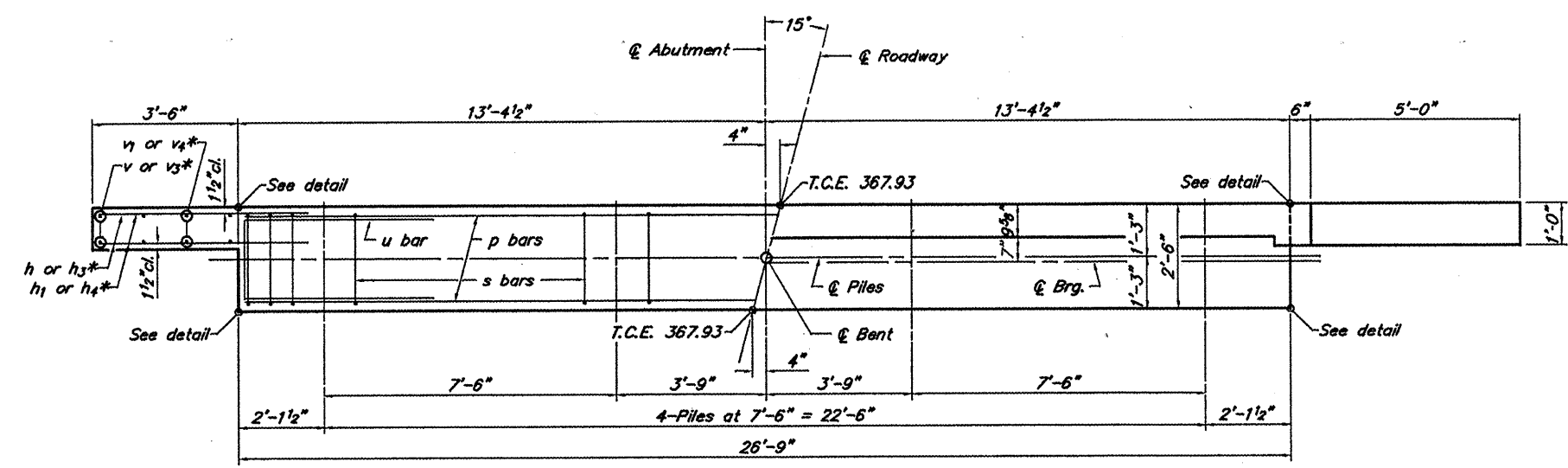
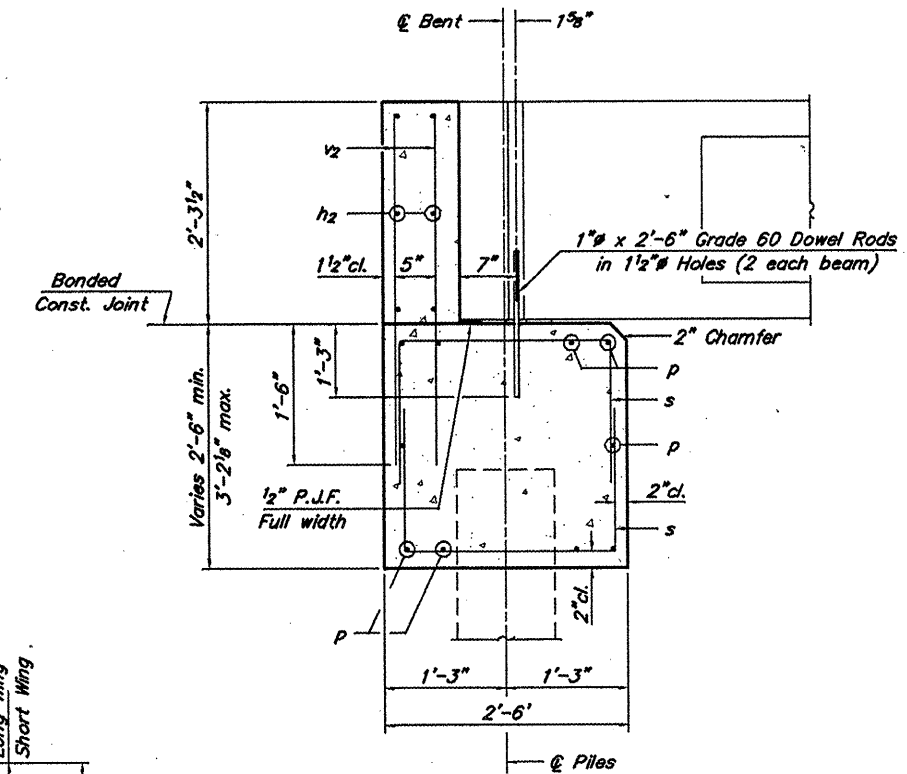


ROUTE	SECTION	COUNTY	TOTAL SHEETS	SHEET NO.
TR 143	02-04118-00-BR	SALINE	11	6
PROJECT NO. BROS-165(26)		CONTRACT NO. 99315		

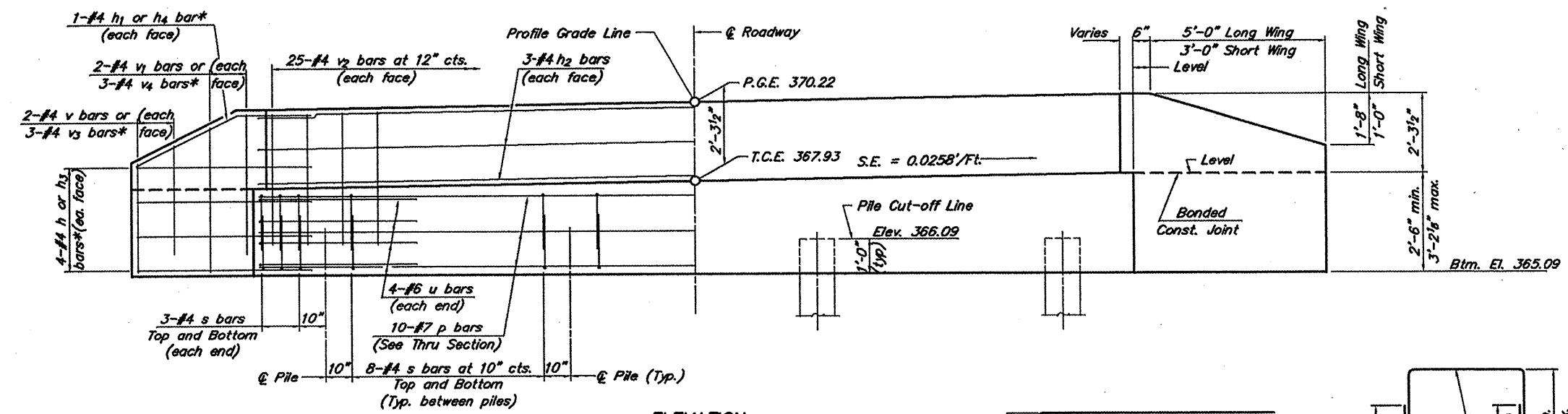


* v_1, v_2, h and h_1 bars in short wing
 v_3, v_4, h_3 and h_4 bars in long wing

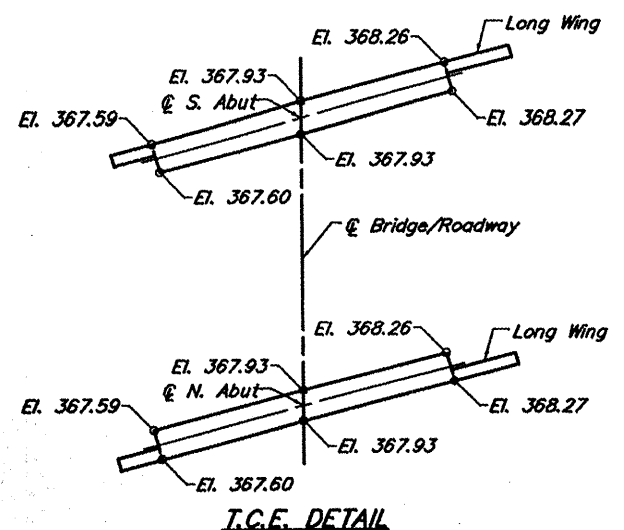
PLAN
 (S. Abut. shown. Move backwall and wings across cap for N. Abut.)



SECTION THRU ABUT.
 (At Right Angles)



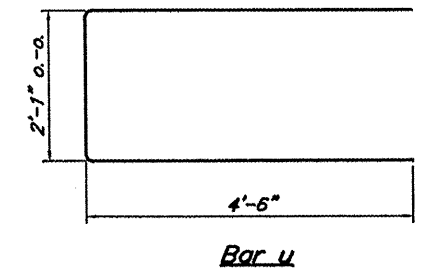
ELEVATION



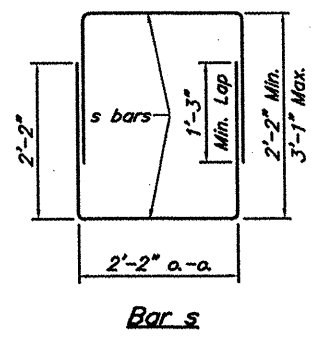
I.C.E. DETAIL

- NOTES**
- The Backwall and the portion of the Wingwalls above the bonded construction joint shall be cast against the in-place beam.
 - Reinforcement bars shall conform to A.A.S.H.T.O. M-31, M-42 or M-53, Grade 60.

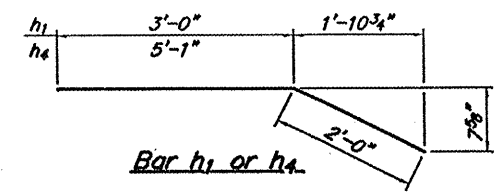
DESIGN STRESSES
 $f_c = 3,500$ psi
 $f_y = 60,000$ psi



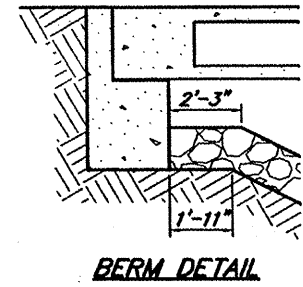
Bar u



Bar s



Bar h1 or h4



BERM DETAIL

BILL OF MATERIAL FOR ONE ABUTMENT

Bar	No.	Size	Length	Shape
h	8	#4	5'-0"	—
h1	2	#4	5'-0"	—
h2	6	#4	26'-5"	—
h3	8	#4	7'-0"	—
h4	2	#4	7'-1"	—
P	10	#7	26'-5"	—
s	60	#4	6'-6"	U
u	8	#6	11'-1"	—
v	4	#4	3'-8"	—
v1	4	#4	4'-5"	—
v2	50	#4	3'-11"	—
v3	6	#4	4'-4"	—
v4	6	#4	5'-1"	—
Concrete Structures			10.4	Cu. Yds.
Reinforcement Bars			1321	Lbs.

ABUTMENTS
 TOWNSHIP ROUTE 143
 SPOIL BANK DITCH
 SECTION 02-04118-00-BR
 SALINE COUNTY