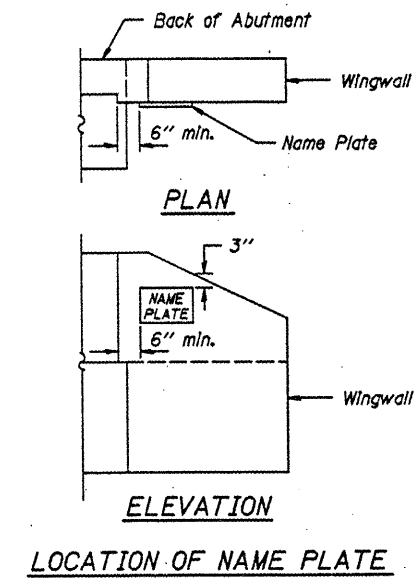
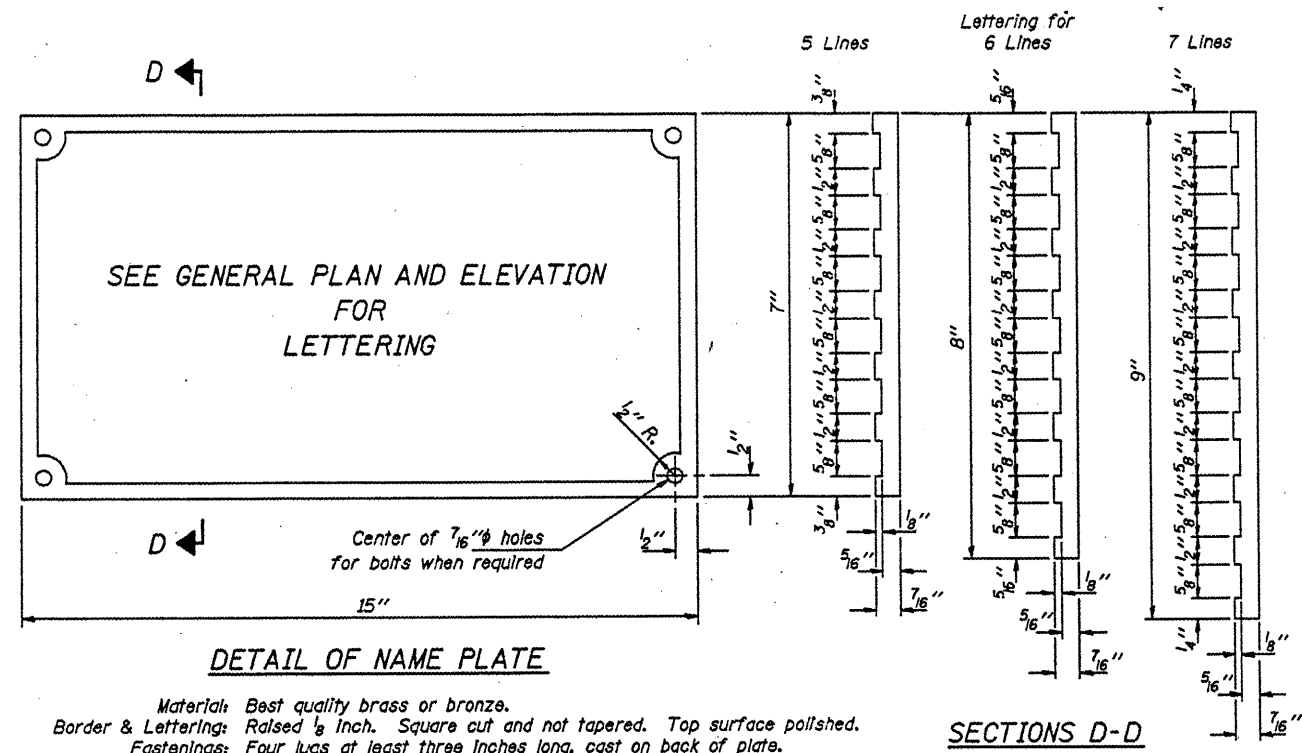


ROUTE	SECTION	COUNTY	TOTAL SHEETS	SHEET NO.
TR 143	02-04118-00-BR	SALINE	11	8
PROJECT NO. BROS-165(26)			CONTRACT NO. 99315	



Illinois Department of Transportation

PASSED APRIL 4, 2005  
 Thomas S. Reynolds  
 Engineer of Office Design

APPROVED APRIL 4, 2005  
 Ralph E. Anderson  
 Engineer of Bridges and Structures

SHEET 1 OF 11

NAME PLATE  
 STANDARD CN