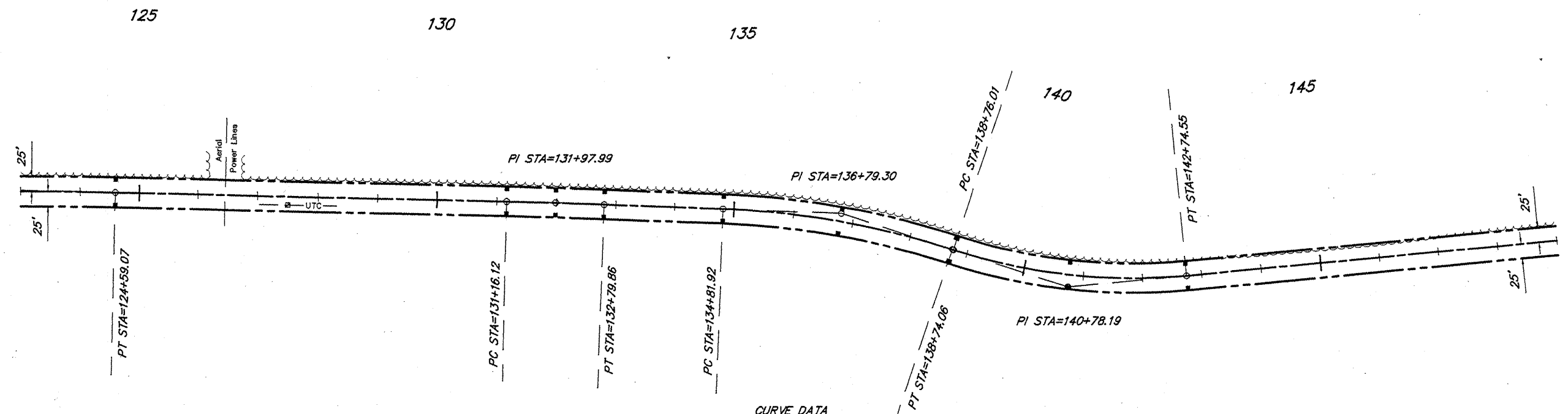


ROUTE	SECTION	COUNTY	TOTAL SHEETS	SHEET NO.
FAS 928	05-00060-00-RS	JOHNSON	7	5
PROJECT NO. RS-928 (105)			CONTRACT NO. 99333	

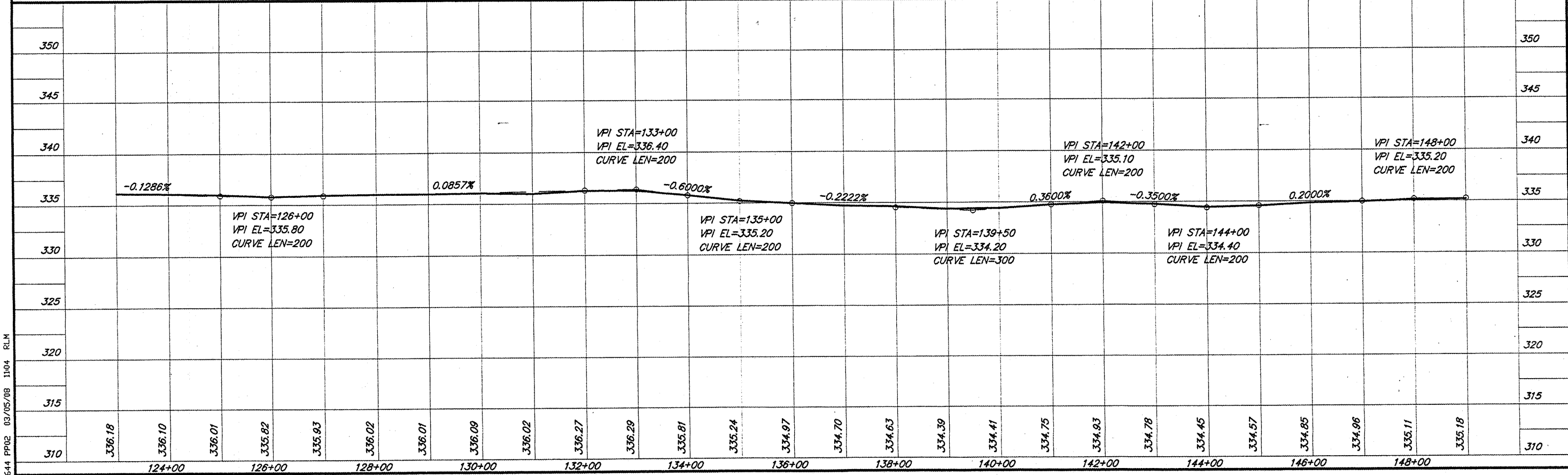
CURVE DATA
 $\Delta = 23^{\circ}47'11''$ $T = 202.18'$
 $D = 5^{\circ}58'06''$ $L = 398.54'$
 $R = 960.00'$ $E = 21.06'$
 $S.E. = 0.077'/ft.$
 Attain Sta. 138+75 to Sta. 140+69
 Remove Sta. 142+23 to Sta. 144+17



SCALES:
 1" = 200' HOR
 1" = 10' VER

CURVE DATA
 $\Delta = 0^{\circ}49'07''$ $T = 81.87'$
 $D = 0^{\circ}30'00''$ $L = 163.73'$
 $R = 11460.00'$ $E = 0.29'$
 $S.E. = 0.065'/ft.$
 Normal Crown

CURVE DATA
 $\Delta = 16^{\circ}09'51''$ $T = 197.38'$
 $D = 4^{\circ}07'19''$ $L = 392.14'$
 $R = 1390.00'$ $E = 13.94'$
 $S.E. = 0.065'/ft.$
 Attain Sta. 133+55 to Sta. 135+25
 Remove Sta. 137+05 to Sta. 138+75



644 P02 03/05/08 1104 RLM