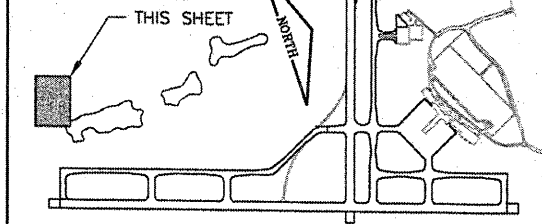


KEYMAP

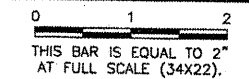


BL063

K:\Bloomington\0708502\Draw\Sheets
 FILE: EXCON02.dwg
 UPDATE BY: Kristy Brod
 PLOT DATE: 4/14/2008 9:42 AM
 AERIAL
 POND LOCATIONS
 surveytopoexh
 CL_STA
 BASE_EXISTGEO
 surveytopo
 BASE_CONTOURS30SCALE
 KEY
 BASE_EXISTTOPO
 tbinfo

REVISIONS

NUMBER	BY	DATE



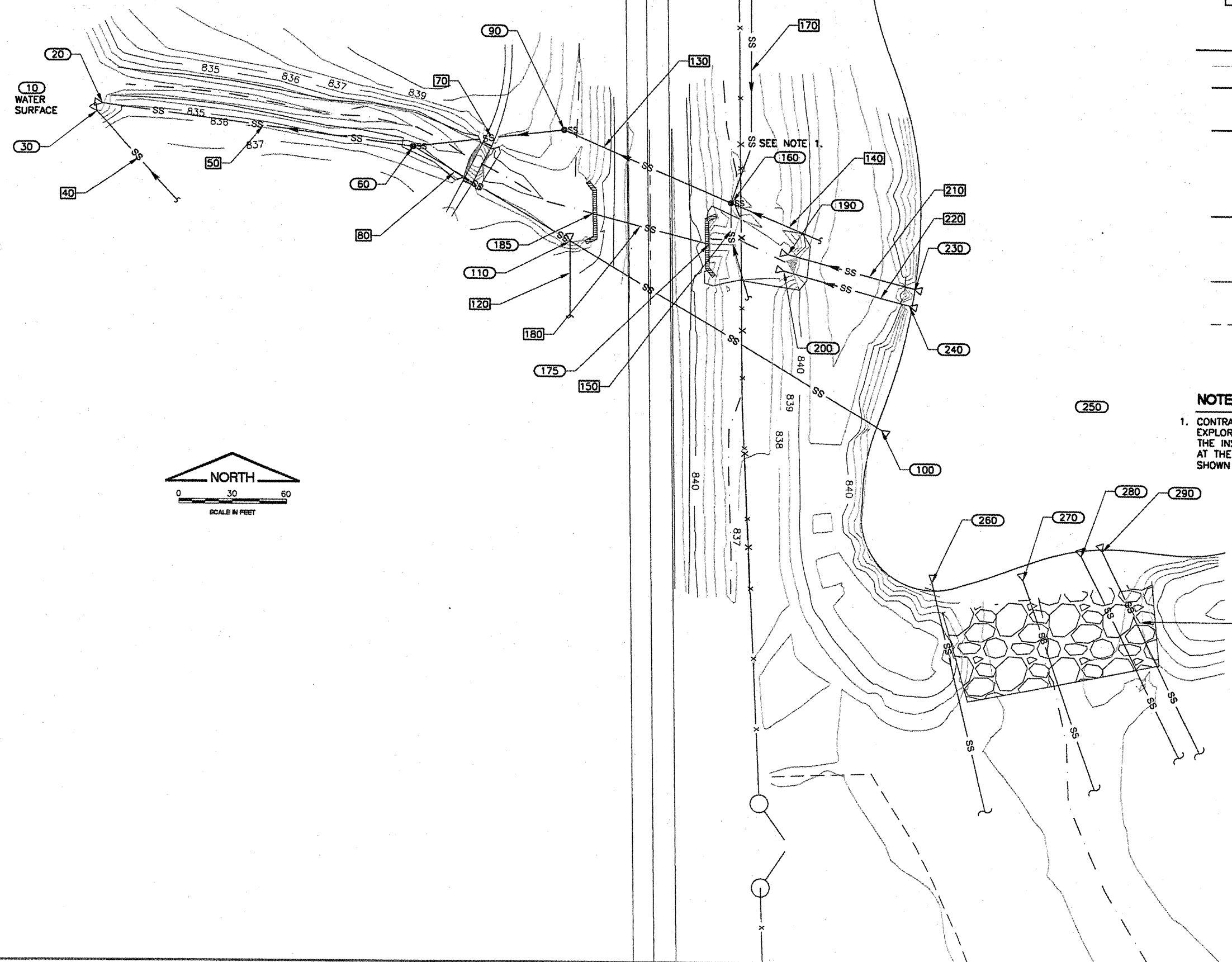
LEGEND

- 845 — EXISTING CONTOURS
- - - EXISTING DITCH FLOWLINE
- ⊙SS EXISTING STORM SEWER MANHOLE
- SS EXISTING STORM SEWER
- ⊙SAN EXISTING SANITARY MANHOLE
- EXISTING INLET
- ▽ EXISTING CULVERT/F.E.S.
- S - EXISTING SANITARY SEWER
- ⊕ EXISTING WATER VALVE
- ⊕ EXISTING FIRE HYDRANT
- x - x - EXISTING FENCELINE
- EXISTING MALS R LIGHT STATION
- - - EXISTING CROP LINE
- (480) STRUCTURE NUMBER
- (485) LINE NUMBER

NOTE:

- CONTRACTOR SHALL PERFORM EXPLORATORY EXCAVATION PRIOR TO THE INSTALLATION OF STORM SEWER AT THE DESIGNATED LOCATIONS SHOWN ON THE PLAN SHEETS.

REMOVAL OF RIPRAP NECESSARY FOR PAVED DITCH & FES INSTALLATION SHALL BE INCIDENTAL TO THE PROJECT



**BLOOMINGTON-NORMAL AIRPORT AUTHORITY
 CENTRAL ILLINOIS REGIONAL AIRPORT
 BLOOMINGTON, ILLINOIS**
**CONSTRUCT DRAINAGE IMPROVEMENTS
 EXISTING CONDITIONS & REMOVALS 2**

© Copyright CMT, Inc.
CMT
 CRAWFORD, MURPHY & TILLY, INC.
 CONSULTING ENGINEERS
 License No. 984-000613

DESIGN BY: RLV
 DRAWN BY: DPA
 CHECKED BY: *RLV*
 APPROVED BY: *RLV*
 DATE: 04/01/2008
 JOB No: 0708502

IL PROJ NO. BMI-3793
 AIP PROJ NO. 3-17-0006-45
 SHEET 08 OF 46 SHEETS