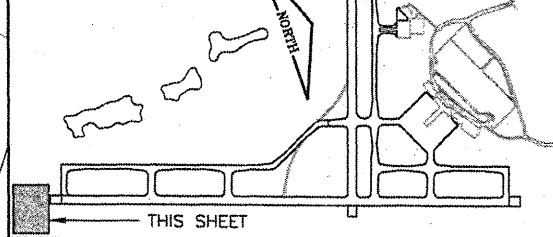




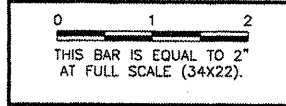
KEYMAP



BL063

K:\Bloomington\0708502\Draw\Sheets
 FILE: EXCON03.dwg
 UPDATE BY: Kristy Brod
 PLOT DATE: 4/14/2008 9:42 AM
 KEY
 BASE_CONTOURS30SCALE
 BASE_EXISTSTOPO
 tbinfo

REVISIONS		
NUMBER	BY	DATE

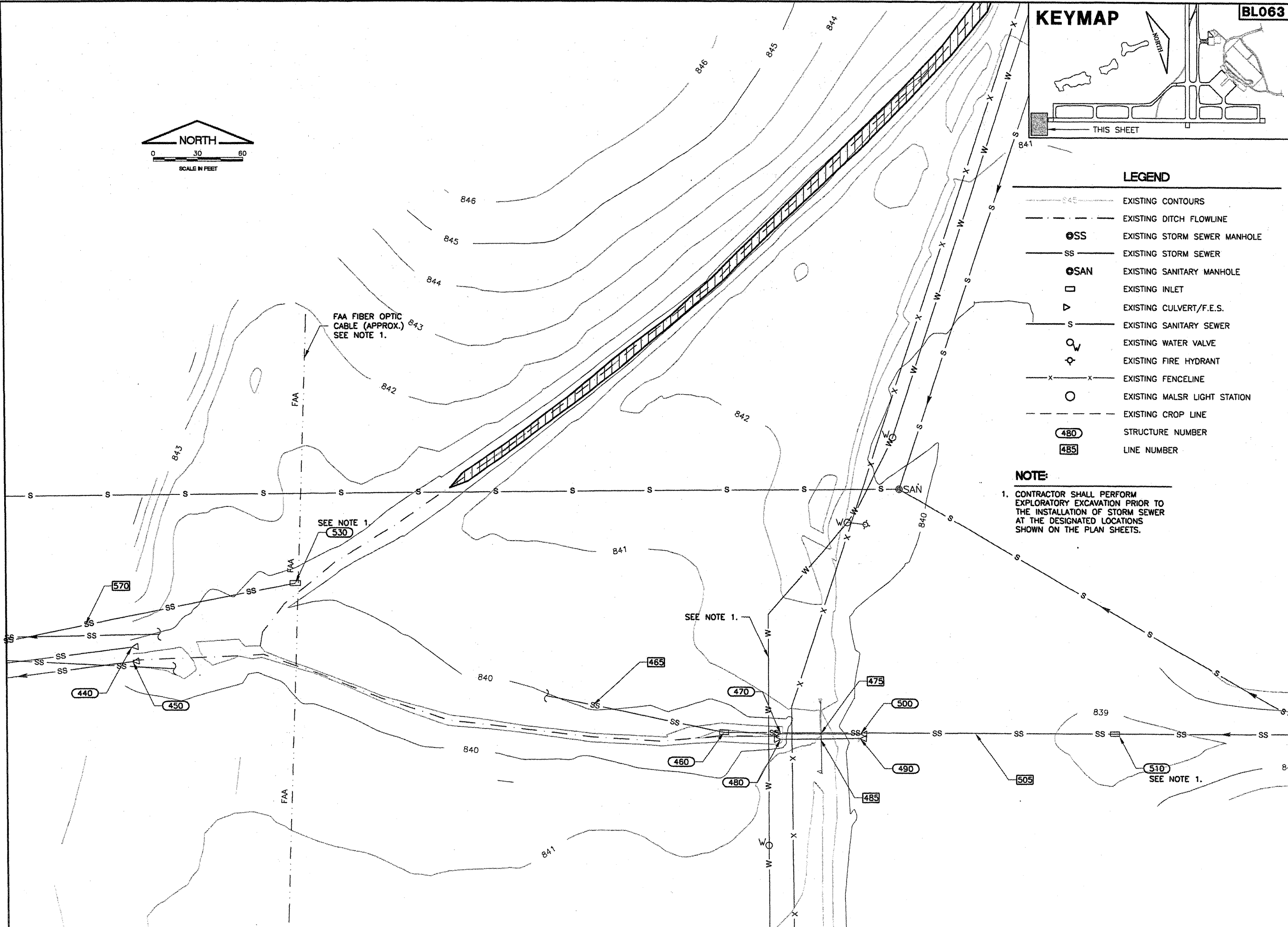


LEGEND

- EXISTING CONTOURS
- - - EXISTING DITCH FLOWLINE
- ⊙SS EXISTING STORM SEWER MANHOLE
- SS — EXISTING STORM SEWER
- ⊙SAN EXISTING SANITARY MANHOLE
- EXISTING INLET
- ▽ EXISTING CULVERT/F.E.S.
- S — EXISTING SANITARY SEWER
- ⊙ EXISTING WATER VALVE
- ⊕ EXISTING FIRE HYDRANT
- x - x - EXISTING FENCELINE
- EXISTING MALSR LIGHT STATION
- - - EXISTING CROP LINE
- 480 STRUCTURE NUMBER
- 485 LINE NUMBER

NOTE:

1. CONTRACTOR SHALL PERFORM EXPLORATORY EXCAVATION PRIOR TO THE INSTALLATION OF STORM SEWER AT THE DESIGNATED LOCATIONS SHOWN ON THE PLAN SHEETS.



**BLOOMINGTON-NORMAL AIRPORT AUTHORITY
 CENTRAL ILLINOIS REGIONAL AIRPORT
 BLOOMINGTON, ILLINOIS**

**CONSTRUCTING DRAINAGE IMPROVEMENTS
 EXISTING CONDITIONS & REMOVALS 3**

© Copyright CMT, Inc.
CMT
 CRANFORD, MURPHY & TILLY, INC.
 CONSULTING ENGINEERS
 License No. 984-000613



DESIGN BY:	RLV
DRAWN BY:	DPA
CHECKED BY:	REN
APPROVED BY:	REN
DATE:	04/01/2008
JOB No:	0708502
IL PROJ NO.	BMI-3793
AIP PROJ NO.	3-17-0006-45
SHEET 09 OF 46 SHEETS	