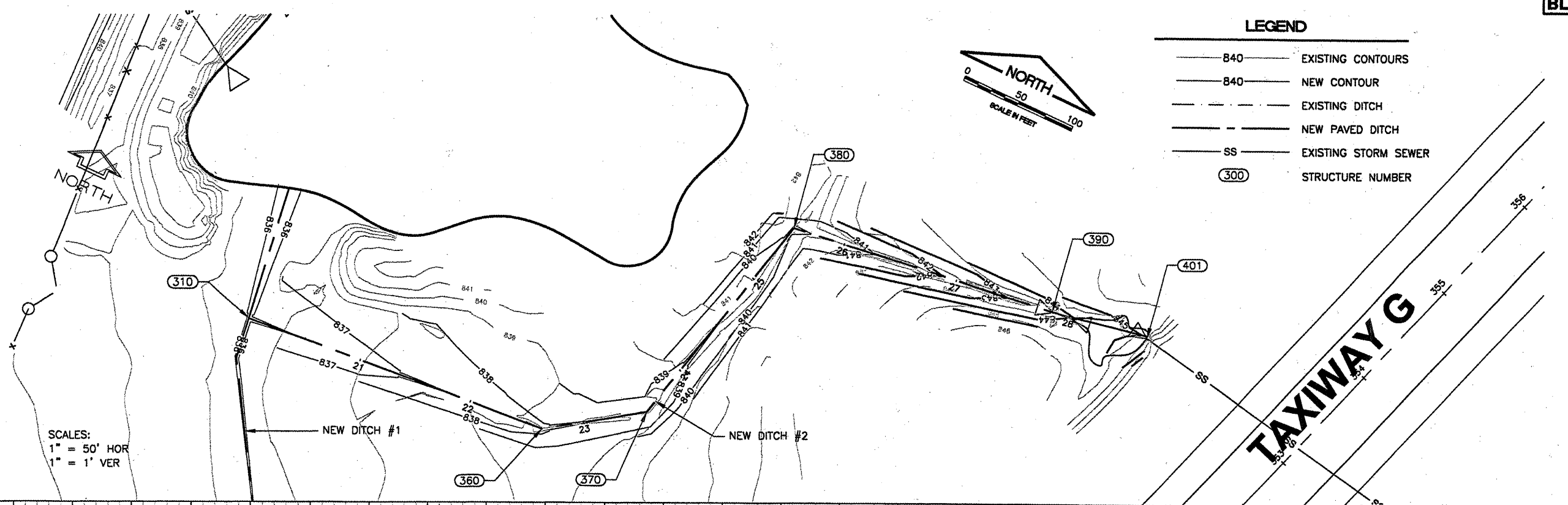
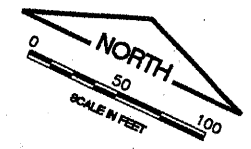


K:\Bloomington\0708502\Draw\EGPT
 FILE: RCp01010.dwg
 UPDATE BY: Kristy Brod
 PLOT DATE: 4/14/2008 9:43 AM
 rcrp010
 BASE_EXISTGEO
 BASE_PROPCON
 BASE_EXISTTOPO
 BASE_CONTOURS30SCALE
 CL_STA
 tbinfo

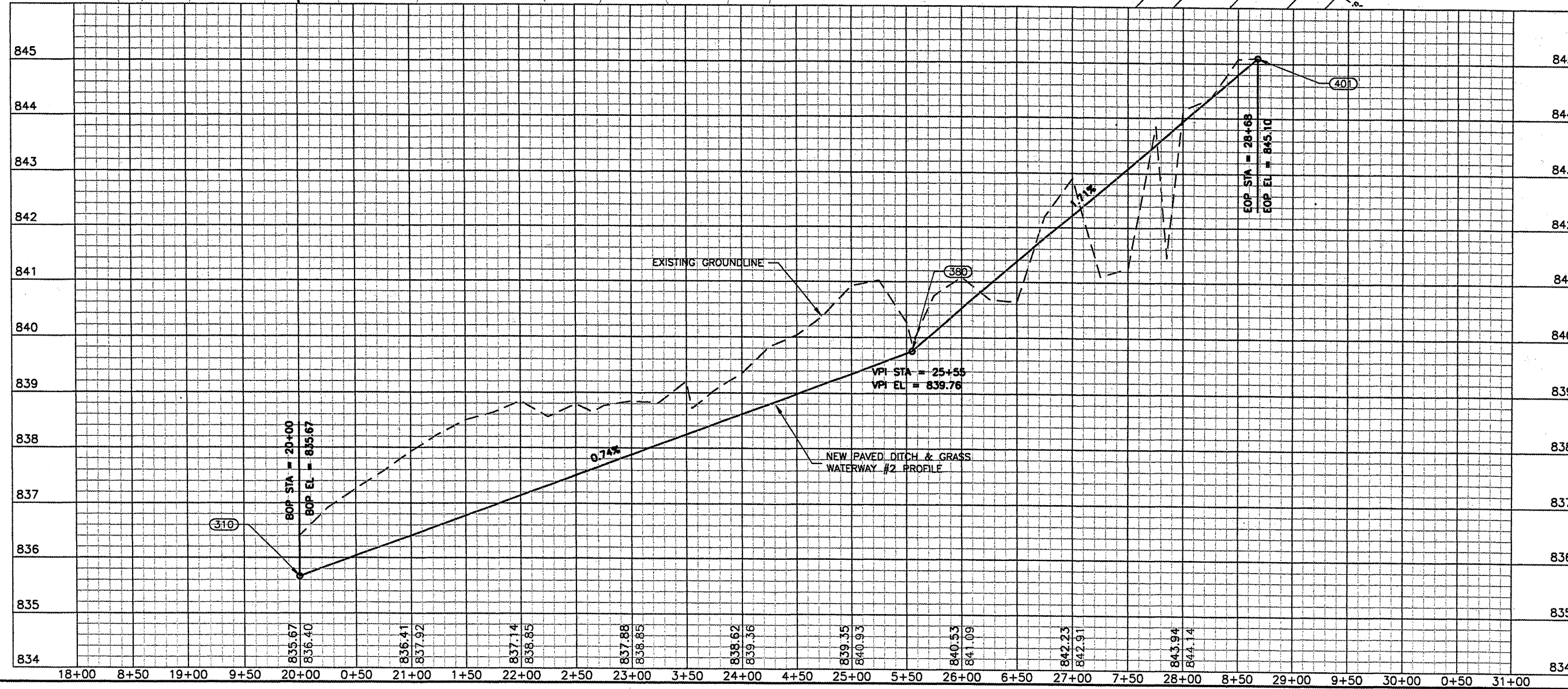
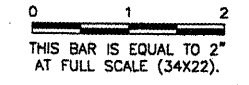
LEGEND

- 840 — EXISTING CONTOURS
- 840 — NEW CONTOUR
- - - EXISTING DITCH
- - - NEW PAVED DITCH
- SS EXISTING STORM SEWER
- (300) STRUCTURE NUMBER



SCALES:
 1" = 50' HOR
 1" = 1' VER

REVISIONS		
NUMBER	BY	DATE



BLOOMINGTON-NORMAL AIRPORT AUTHORITY
CENTRAL ILLINOIS REGIONAL AIRPORT
BLOOMINGTON, ILLINOIS

CONSTRUCT DRAINAGE IMPROVEMENTS
DITCH 2 GRADING
PLAN & PROFILE
STA. 20+00 TO STA. 27+85

© Copyright, CMT, Inc.

CMT
 CRAWFORD, MURPHY & TILLY, INC.
 CONSULTING ENGINEERS
 License No. 84-000613

DESIGN BY:	KLB
DRAWN BY:	DPA
CHECKED BY:	<i>RLV</i>
APPROVED BY:	<i>RLV</i>
DATE:	04/01/2008
JOB No:	0708502
IL PROJ NO.	BMI-3793
AIP PROJ NO.	3-17-0006-45
SHEET 15 OF 46 SHEETS	