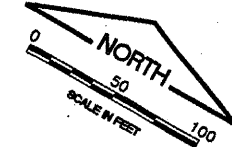
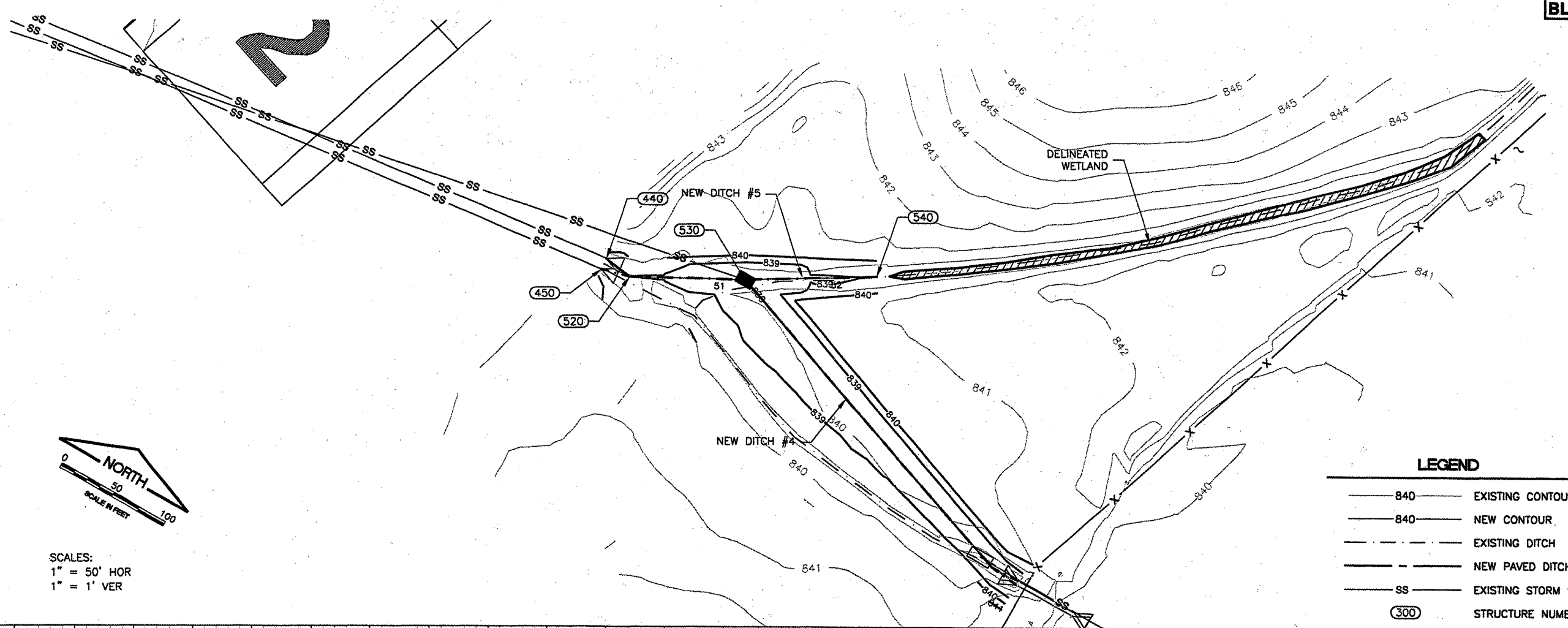
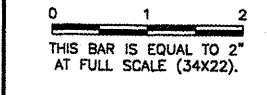


BL063

K:\Bloomington\0708502\Draw\EGPT
 FILE: RCP01007.dwg
 UPDATE BY: Kristy Brod
 PLOT DATE: 4/14/2008 9:56 AM
 rcp01007
 CL_STA
 BASE_EXISTPO
 BASE_PROPCON
 BASE_EXISTGEO
 BASE_CONTOURS30SCALE
 tbinfo
 BASE_PROPIMP

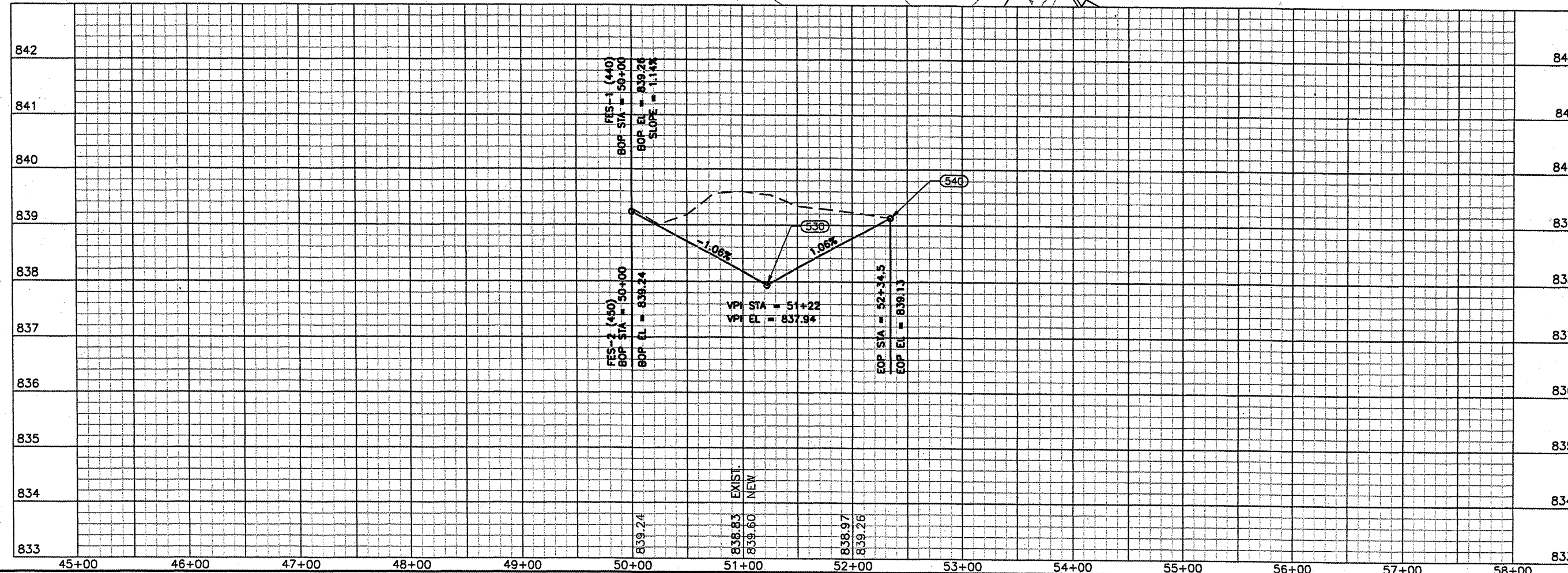
REVISIONS		
NUMBER	BY	DATE



SCALES:
 1" = 50' HOR
 1" = 1' VER

LEGEND

- 840 — EXISTING CONTOURS
- 840 — NEW CONTOUR
- - - - EXISTING DITCH
- — — — NEW PAVED DITCH
- SS — EXISTING STORM SEWER
- (300) STRUCTURE NUMBER



BLOOMINGTON-NORMAL AIRPORT AUTHORITY
 CENTRAL ILLINOIS REGIONAL AIRPORT
 BLOOMINGTON, ILLINOIS

CONSTRUCT DRAINAGE IMPROVEMENTS
 DITCH 5 GRADING
 PLAN & PROFILE
 STA. 50+00 TO STA. 52+34.50

© Copyright CMT, Inc.
CMT
 CRAWFORD, MURPHY & TILLY, INC.
 CONSULTING ENGINEERS
 License No. 184-000613

DESIGN BY: KLB
 DRAWN BY: DPA
 CHECKED BY: *RW*
 APPROVED BY: *RW*
 DATE: 04/01/2008
 JOB No: 0708502

IL PROJ NO. BMI-3793
 AIP PROJ NO. 3-17-0006-45