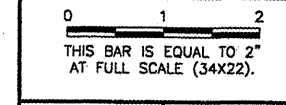


REVISIONS		
NUMBER	BY	DATE

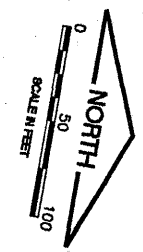
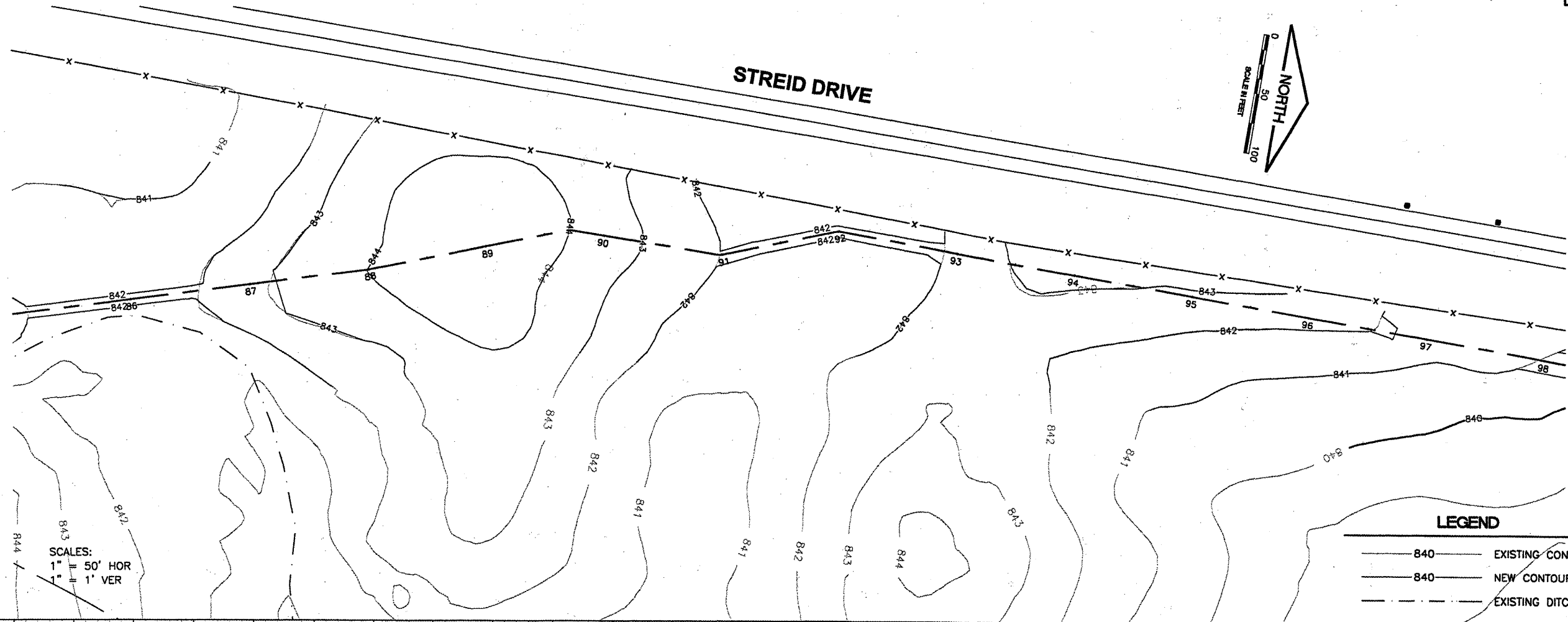


**BLOOMINGTON-NORMAL AIRPORT AUTHORITY  
 CENTRAL ILLINOIS REGIONAL AIRPORT  
 BLOOMINGTON, ILLINOIS**

**CONSTRUCT DRAINAGE IMPROVEMENTS  
 BERM GRADING  
 PLAN & PROFILE 1  
 STA. 85+15 TO STA. 98+00**

© copyright CMT, Inc.  
**CMT**  
 CRAWFORD, MURPHY & TILLY, INC.  
 CONSULTING ENGINEERS  
 License No. 084-000619

DESIGN BY:	KLB
DRAWN BY:	DPA
CHECKED BY:	<i>RW</i>
APPROVED BY:	<i>RW</i>
DATE:	04/01/2008
JOB No:	0708502
IL PROJ NO.	BMI-3793
AIP PROJ NO.	3-17-0006-45
SHEET	19 OF 46 SHEETS



**LEGEND**

- 840 EXISTING CONTOURS
- 840 NEW CONTOUR
- EXISTING DITCH

SCALES:  
 1" = 50' HOR  
 1" = 1' VER

