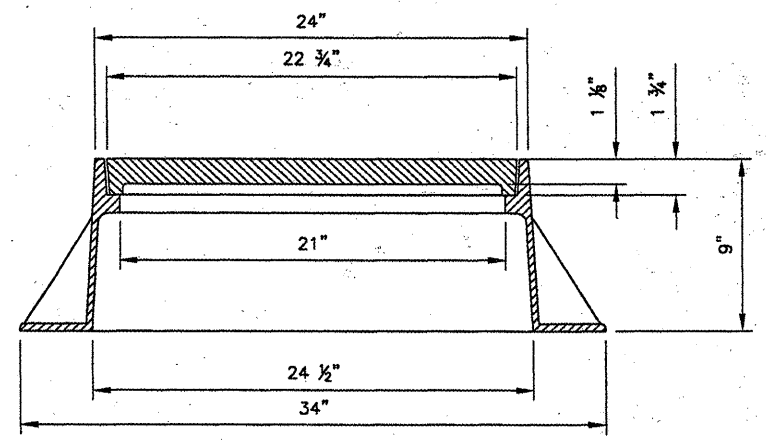
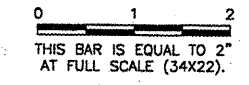
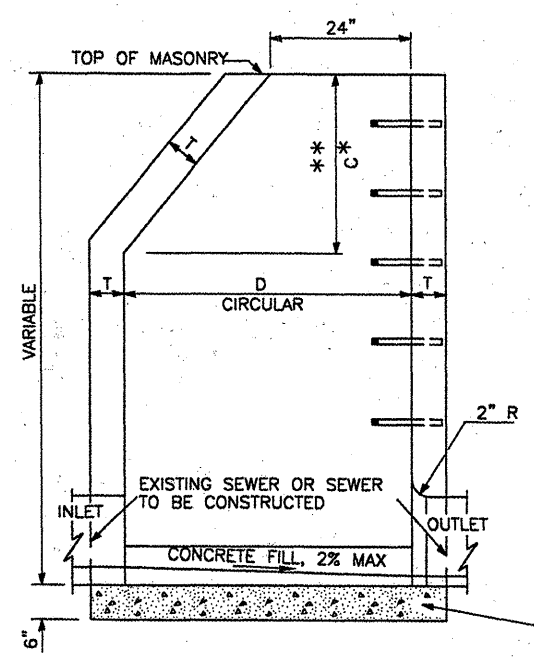


REVISIONS		
NUMBER	BY	DATE

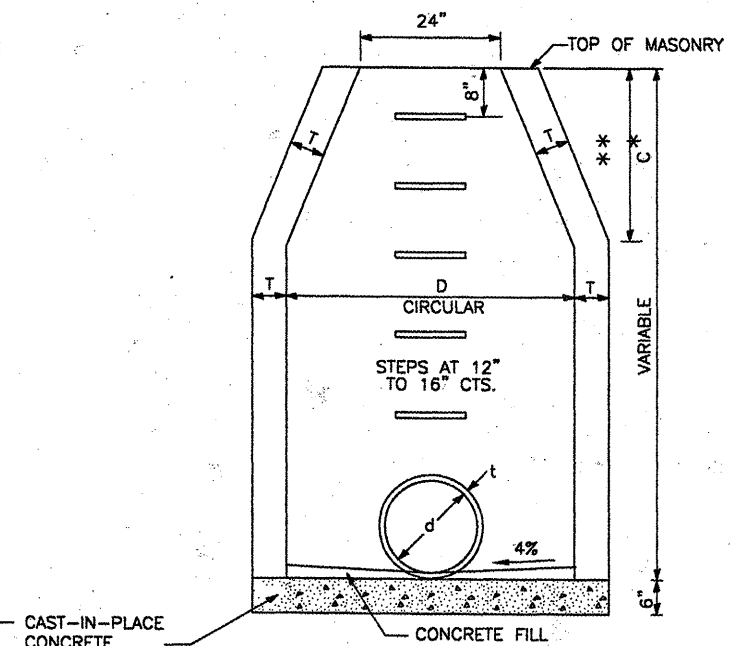


MANHOLE FRAME, OPEN LID
 NEENAH R-2504-D OR EQUIVALENT
 N.T.S.

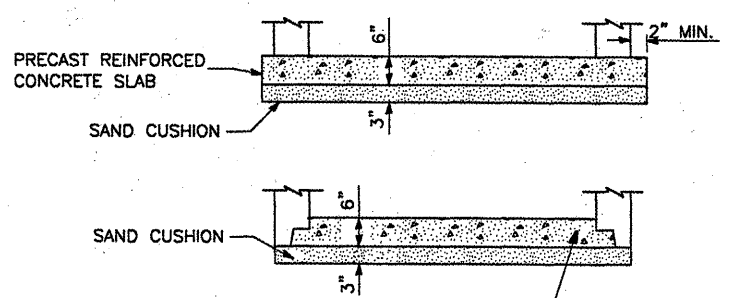
NOTE 1: LID SHALL BE BOLTED TO FRAME.



ELEVATION - ECCENTRIC



ELEVATION - CONCENTRIC



ALTERNATE BOTTOM SLAB

TYPE A MANHOLE DETAIL
 IDOT STANDARD 602401-1
 N.T.S.

ALTERNATE MATERIALS FOR WALLS	D	C	T (MIN.)
CONCRETE MASONRY UNIT	4'-0" 5'-0"	30" 3'-9"	5" 6"
BRICK MASONRY	4'-0" 5'-0"	30" 3'-9"	8" 8"
PRECAST REINFORCED CONCRETE SECTION	4'-0" 5'-0"	30" 3'-9"	4" 5"
CAST-IN-PLACE CONCRETE	4'-0" 5'-0"	30" 3'-9"	6" 6"

GENERAL NOTES

- SEE STANDARD 602701 FOR DETAILS OF STEPS.
- * DIMENSION "C" FOR PRECAST REINFORCED CONCRETE SECTIONS MAY VARY FROM THE DIMENSION GIVEN TO PLUS 6".
- ** SEE STANDARD 602601 FOR OPTIONAL PRECAST REINFORCED CONCRETE FLAT SLAB TOP.

BLOOMINGTON-NORMAL AIRPORT AUTHORITY
CENTRAL ILLINOIS REGIONAL AIRPORT
BLOOMINGTON, ILLINOIS

CONSTRUCT DRAINAGE IMPROVEMENTS
MANHOLE DETAILS

© Copyright CMT, Inc.
CMT
 CRAWFORD, MURPHY & TILLY, INC.
 CONSULTING ENGINEERS
 License No. 184-000813

DESIGN BY:	RLV
DRAWN BY:	DPA
CHECKED BY:	RLV
APPROVED BY:	RLV
DATE:	04/01/2008
JOB No:	0708502
IL PROJ NO.	BMI-3793
AIP PROJ NO.	3-17-0006-45
SHEET	23 OF 46 SHEETS