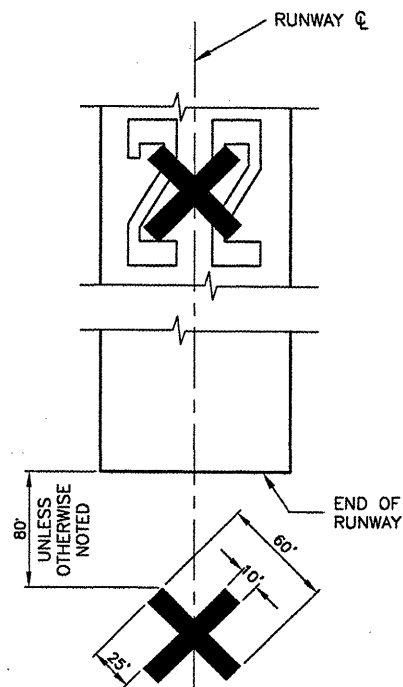


BL064

REVISIONS		
NUMBER	BY	DATE

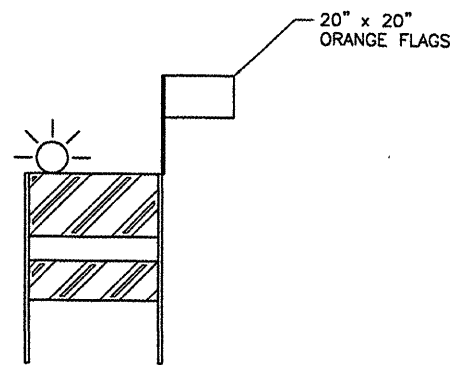
0 1 2
 THIS BAR IS EQUAL TO 2"
 AT FULL SCALE (34X22).



PORTABLE CLOSED RUNWAY MARKER
NOTES AND MARKER DETAIL
 N.T.S.

NOTES

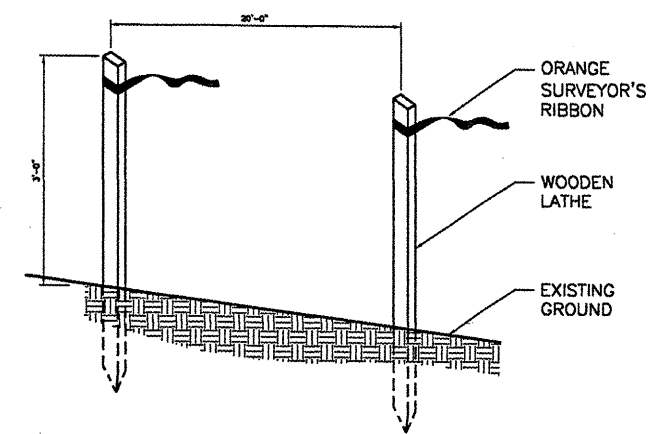
1. THE AIRPORT WILL PROVIDE PORTABLE LIGHTED CLOSURE MARKERS FOR THE CONTRACTOR'S USE.
2. THE CONTRACTOR WILL BE REQUIRED TO TOW AND SET UP THE MARKERS AT THE ENDS OF THE RUNWAY WHENEVER RUNWAY CLOSURES ARE REQUIRED
3. THE CONTRACTOR WILL BE REQUIRED TO PROVIDE FUEL AND DAILY/PERIODIC MAINTENANCE INSPECTIONS AS REQUIRED BY THE AIRPORT.
4. THE AIRPORT WILL PERFORM PERIODIC MAINTENANCE, PROVIDE REPLACEMENT PARTS AND PERFORM REPAIRS AS REQUIRED TO KEEP THE EQUIPMENT OPERATIONAL.
5. THE COST OF SET-UP, FUELING AND REMOVAL OF THE MARKERS SHALL BE INCIDENTAL TO THE CONTRACT.
6. MARKERS SHALL BE PLACED OVER EXISTING RUNWAY NUMERALS. HOWEVER, WHEN WORK IS NECESSARY FOR THAT AREA OR PAVEMENT IS OPEN TO TAXIING AIRCRAFT, THE MARKERS SHALL BE RELOCATED OFF THE PAVEMENT AS SHOWN ON THE DETAIL.



FLASHER BARRICADE DETAIL
 N.T.S.

FLASHER BARRICADE NOTES

1. FLASHERS TO BE BATTERY OPERATED. LENS TO BE RED AND BE ABLE TO ROTATE 90 DEGREES.
2. SANDBAGS TO BE PLACED ON EACH SUPPORT BRACE AS REQUIRED TO PREVENT DISPLACEMENT BY WIND, JET OR PROP BLAST.
3. NO SEPARATE PAYMENT WILL BE MADE FOR THIS ITEM. COSTS SHALL BE CONSIDERED INCIDENTAL TO THE PROJECT.
4. PLACE AT 10' INTERVALS.



CONSTRUCTION SETBACK LINE DETAIL
 N.T.S.

BLOOMINGTON-NORMAL AIRPORT AUTHORITY
 CENTRAL ILLINOIS REGIONAL AIRPORT
 BLOOMINGTON, ILLINOIS

CONSTRUCT NEW ARFF FACILITY
 CONSTRUCTION ACTIVITY PLAN DETAILS 2

© Copyright CMT, Inc.
CMT
 CRAWFORD, MURPHY & TILLY, INC.
 CONSULTING ENGINEERS
 License No. 184-000813

DESIGN BY: RLV
 DRAWN BY: DPA
 CHECKED BY: RLV
 APPROVED BY: RLV
 DATE: 04/01/2008
 JOB No: 0508509
 ILL. PROJ. NO. BMI-3797
 AIP PROJ. NO. 3-17-0006-46 & 48
 SHEET 06 OF 66 SHEETS