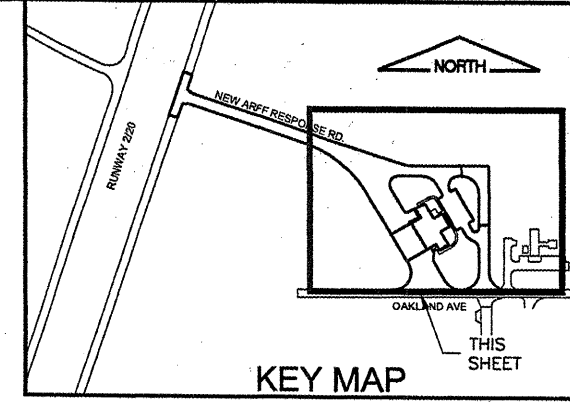
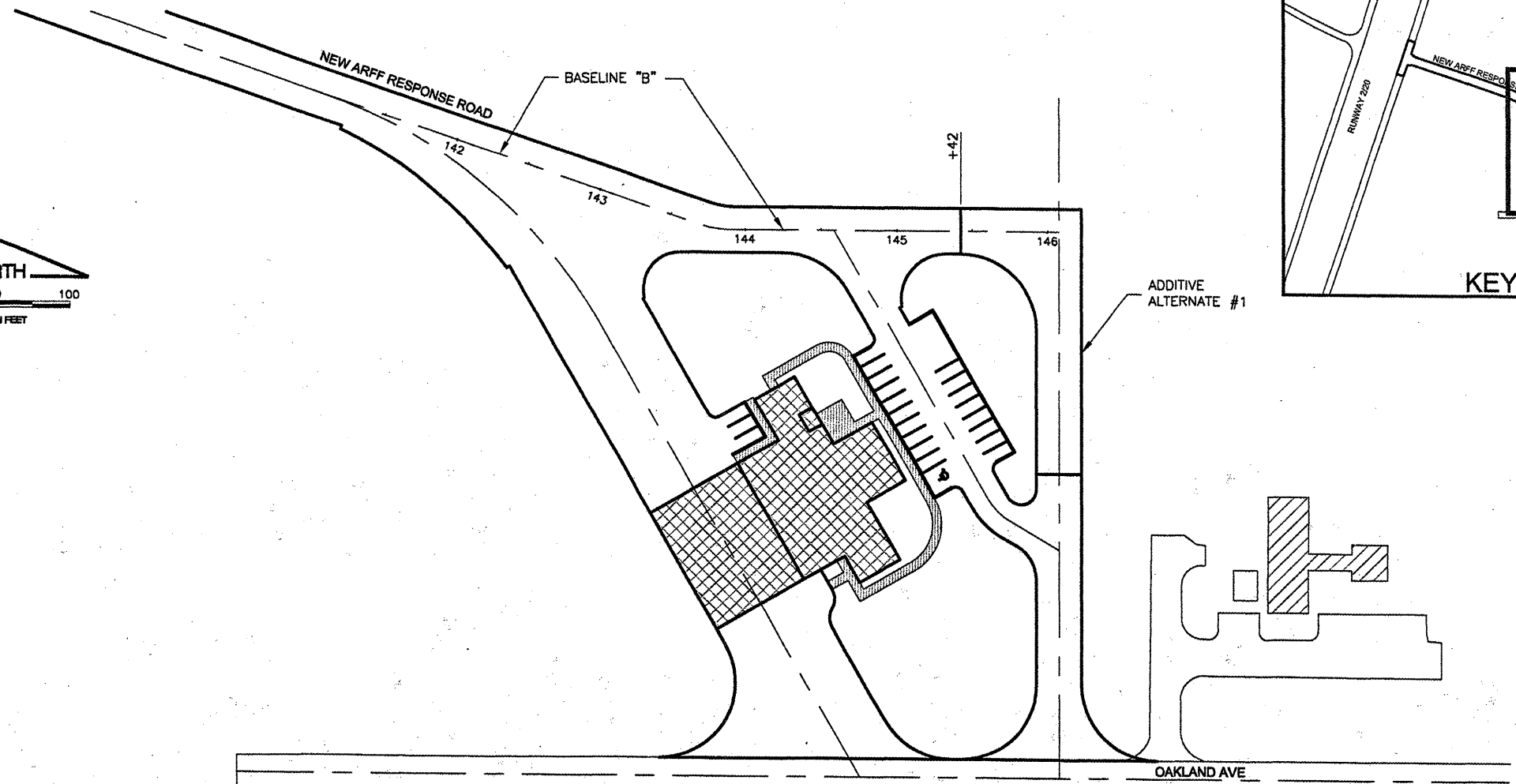




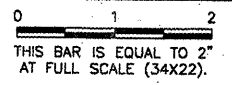
SCALES:  
 1" = 50' HOR  
 1" = 2' VER



K:\Bloomington\0508509\_BMI\_ARFF\Draw\EGPT  
 FILE: RCpD1015.dwg  
 UPDATE BY: Kristy Brod  
 PLOT DATE: 4/18/2008 8:32 AM  
 rcpD1015  
 BASE\_EXISTTOPO  
 BASE\_EXISTGEO  
 BASE\_PROPOSED  
 SITE\_KEYMAP

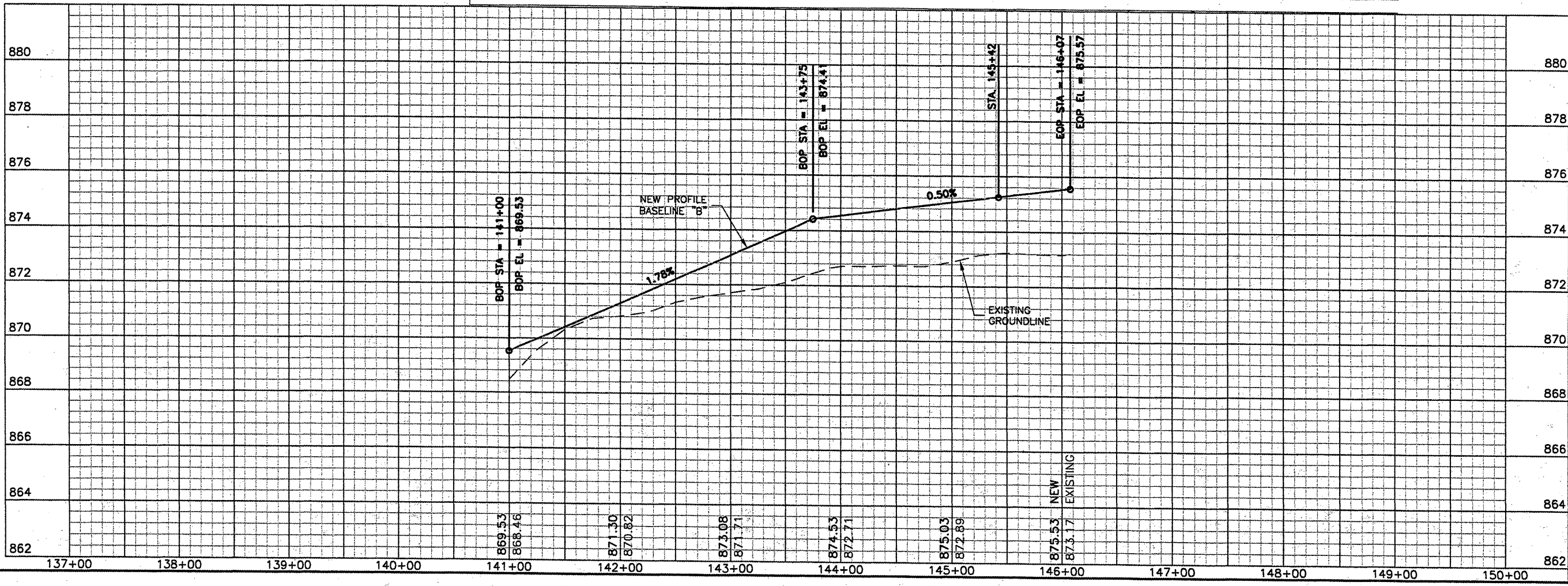
**BL064**

REVISIONS		
NUMBER	BY	DATE



BLOOMINGTON-NORMAL AIRPORT AUTHORITY  
 CENTRAL ILLINOIS REGIONAL AIRPORT  
 BLOOMINGTON, ILLINOIS

CONSTRUCT NEW ARFF FACILITY  
 ARFF RESPONSE & SERVICE ROAD  
 PLAN & PROFILE



© copyright CMT, Inc.

**CMT**  
 CRAWFORD, MURPHY & TILLY, INC.  
 CONSULTING ENGINEERS  
 License No. 184-000653



DESIGN BY:	KLB
DRAWN BY:	DPA
CHECKED BY:	RLW
APPROVED BY:	RLW
DATE:	04/01/2008
JOB No:	0508509
IL PROJ. NO.	BMI-3797
AIP PROJ. NO.	3-17-0006-46 & 48
SHEET	15 OF 66 SHEETS