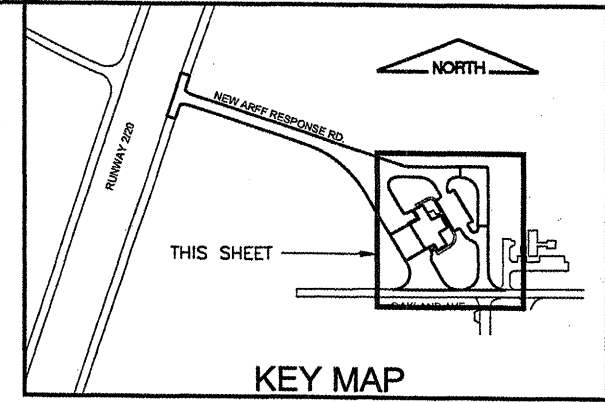
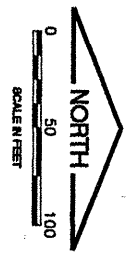
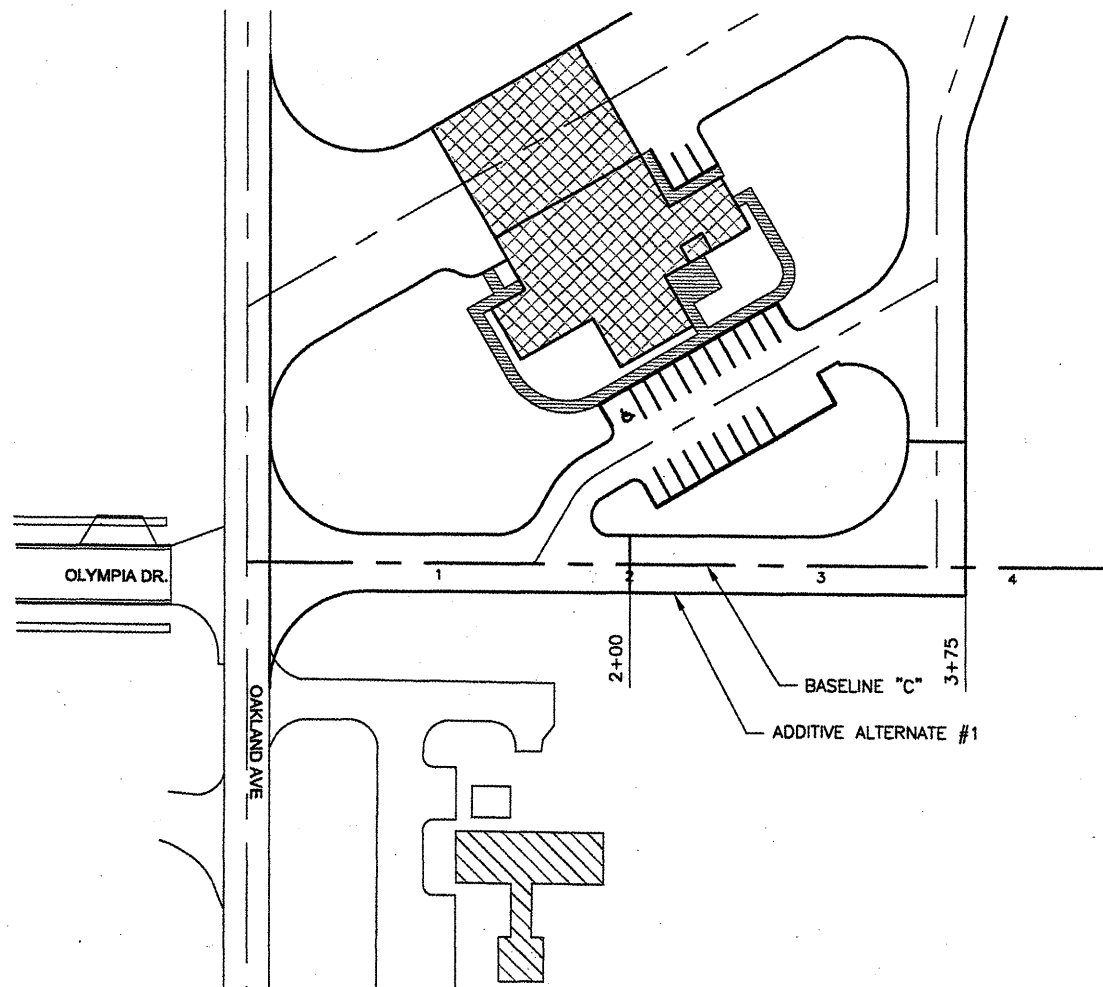


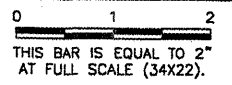
SCALES:  
 1" = 50' HOR  
 1" = 2' VER



K:\Bloomington\0508509\_BMI\_ARFF\Draw\EGPT  
 FILE: RCp01016.dwg  
 UPDATE BY: Kristy Brod  
 PLOT DATE: 4/18/2008 8:32 AM  
 rcprf016  
 BASE\_EXISTTOPO  
 BASE\_EXISTGEO  
 BASE\_PROPGEO  
 SITE\_KEYMAP

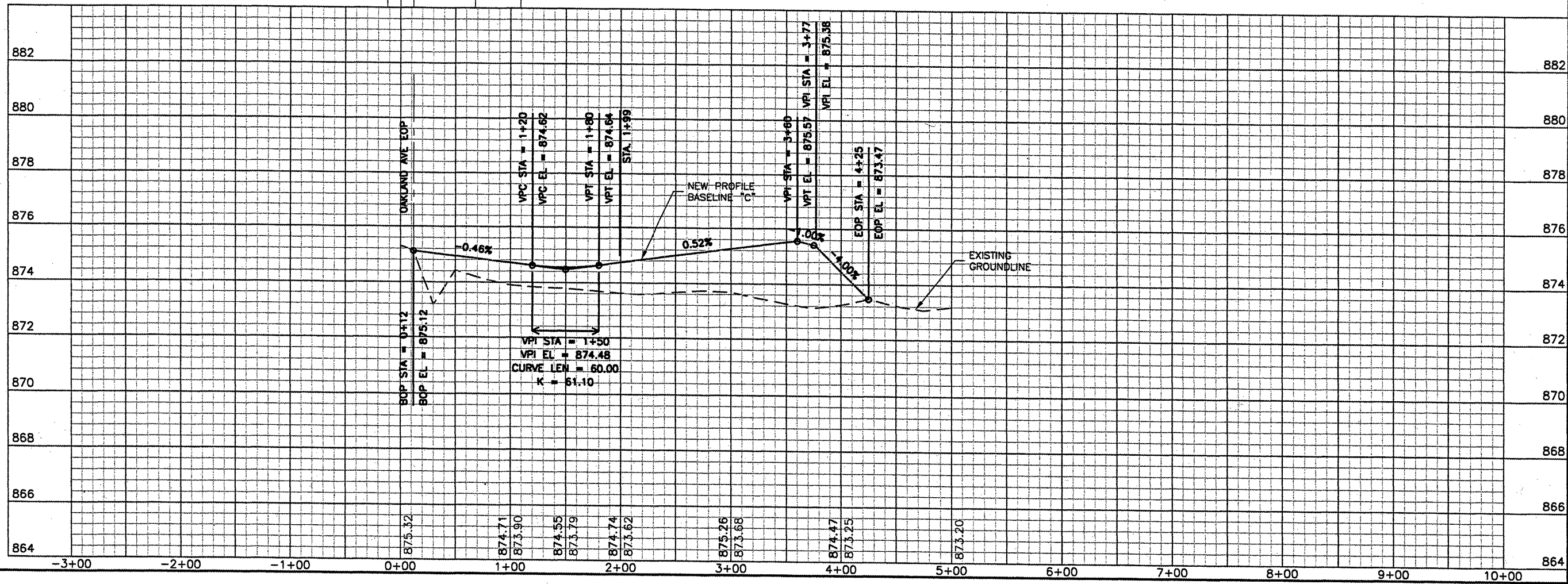
**BL064**

REVISIONS		
NUMBER	BY	DATE



**BLOOMINGTON-NORMAL AIRPORT AUTHORITY  
 CENTRAL ILLINOIS REGIONAL AIRPORT  
 BLOOMINGTON, ILLINOIS**

**CONSTRUCT NEW ARFF FACILITY  
 SERVICE ROAD  
 PLAN & PROFILE**



© Copyright CMT, Inc.

**CMT**  
 CRAWFORD, MURPHY & TILLY, INC.  
 CONSULTING ENGINEERS  
 License No. 184-000613

DESIGN BY:	KLB
DRAWN BY:	DPA
CHECKED BY:	<i>RLW</i>
APPROVED BY:	<i>RLW</i>
DATE:	04/01/2008
JOB No:	0508509
IL PROJ. NO.	BMI-3797
AIP PROJ. NO.	3-17-0006-46 & 48
SHEET 16 OF 66 SHEETS	