

BL064

REVISIONS		
NUMBER	BY	DATE

0 1 2
 THIS BAR IS EQUAL TO 2" AT FULL SCALE (34X22).

BLOOMINGTON-NORMAL AIRPORT AUTHORITY
 CENTRAL ILLINOIS REGIONAL AIRPORT
 BLOOMINGTON, ILLINOIS

CONSTRUCT NEW ARFF FACILITY
 PAVING AND MISCELLANEOUS DETAILS 2

© Copyright CMT, Inc.
CMT
 CRAWFORD, MURPHY & TILLY, INC.
 CONSULTING ENGINEERS
 License No. 184-000613



DESIGN BY:	---
DRAWN BY:	CMT
CHECKED BY:	RW
APPROVED BY:	RW
DATE:	04/01/2008
JOB No:	0508509
IL PROJ. NO.	BMI-3797
AIP PROJ. NO.	3-17-0006-46 & 48
SHEET	25 OF 66 SHEETS

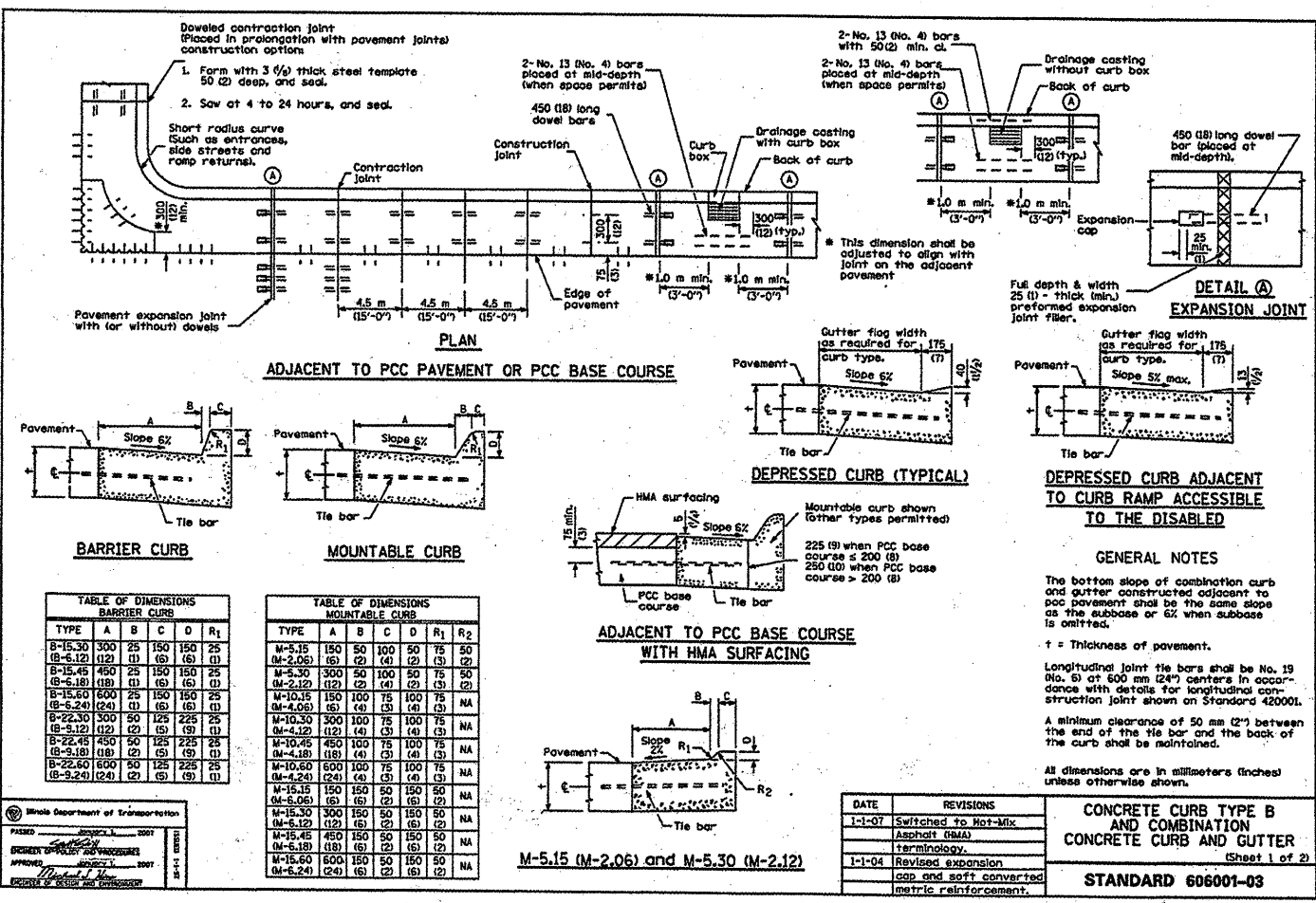
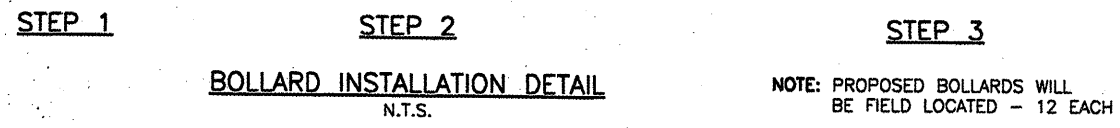
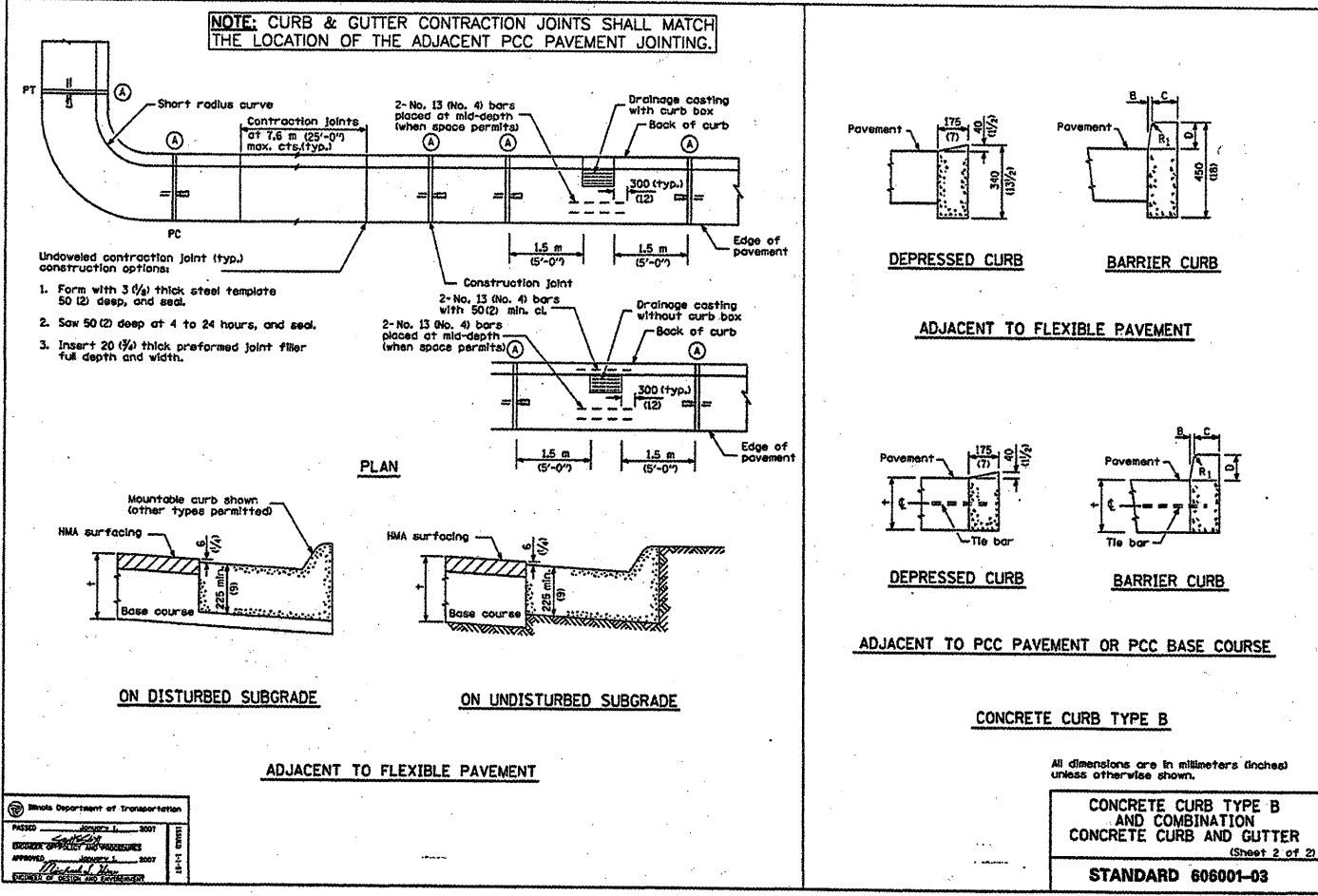


TABLE OF DIMENSIONS BARRIER CURB

TYPE	A	B	C	D	R1
B-15-30	300	25	150	150	25
B-6-12	(12)	(1)	(6)	(6)	(1)
B-15-45	450	25	150	150	25
B-6-18	(18)	(1)	(6)	(6)	(1)
B-15-60	600	25	150	150	25
B-6-24	(24)	(1)	(6)	(6)	(1)
B-22-30	300	50	125	225	25
B-9-12	(12)	(2)	(9)	(9)	(1)
B-22-45	450	50	125	225	25
B-9-18	(18)	(2)	(9)	(9)	(1)
B-22-60	600	50	125	225	25
B-9-24	(24)	(2)	(9)	(9)	(1)

TABLE OF DIMENSIONS MOUNTABLE CURB

TYPE	A	B	C	D	R1	R2
M-5-15	150	50	100	50	75	50
M-2-06	(6)	(2)	(4)	(2)	(3)	(2)
M-5-30	300	50	100	50	75	50
M-2-12	(12)	(2)	(4)	(2)	(3)	(2)
M-10-15	150	100	75	100	75	NA
M-4-06	(6)	(4)	(3)	(4)	(3)	NA
M-10-30	300	100	75	100	75	NA
M-4-12	(12)	(4)	(3)	(4)	(3)	NA
M-10-45	450	100	75	100	75	NA
M-4-18	(18)	(4)	(3)	(4)	(3)	NA
M-10-60	600	100	75	100	75	NA
M-4-24	(24)	(4)	(3)	(4)	(3)	NA
M-15-15	150	150	50	150	50	NA
M-6-06	(6)	(6)	(2)	(6)	(2)	NA
M-15-30	300	150	50	150	50	NA
M-6-12	(12)	(6)	(2)	(6)	(2)	NA
M-15-45	450	150	50	150	50	NA
M-6-18	(18)	(6)	(2)	(6)	(2)	NA
M-15-60	600	150	50	150	50	NA
M-6-24	(24)	(6)	(2)	(6)	(2)	NA

TABLE OF DIMENSIONS BARRIER CURB

TYPE	A	B	C	D	R1
M-5-15	150	50	100	50	75
M-2-06	(6)	(2)	(4)	(2)	(3)
M-5-30	300	50	100	50	75
M-2-12	(12)	(2)	(4)	(2)	(3)
M-10-15	150	100	75	100	75
M-4-06	(6)	(4)	(3)	(4)	(3)
M-10-30	300	100	75	100	75
M-4-12	(12)	(4)	(3)	(4)	(3)
M-10-45	450	100	75	100	75
M-4-18	(18)	(4)	(3)	(4)	(3)
M-10-60	600	100	75	100	75
M-4-24	(24)	(4)	(3)	(4)	(3)
M-15-15	150	150	50	150	50
M-6-06	(6)	(6)	(2)	(6)	(2)
M-15-30	300	150	50	150	50
M-6-12	(12)	(6)	(2)	(6)	(2)
M-15-45	450	150	50	150	50
M-6-18	(18)	(6)	(2)	(6)	(2)
M-15-60	600	150	50	150	50
M-6-24	(24)	(6)	(2)	(6)	(2)

DATE **REVISIONS**

1-1-07	Switched to Hot-Mix Asphalt (HMA)
1-1-04	Revised expansion joint and soft converted metric reinforcement.

CONCRETE CURB TYPE B AND COMBINATION CONCRETE CURB AND GUTTER
 (Sheet 1 of 2)
STANDARD 606001-03