

**BL064**

REVISIONS		
NUMBER	BY	DATE

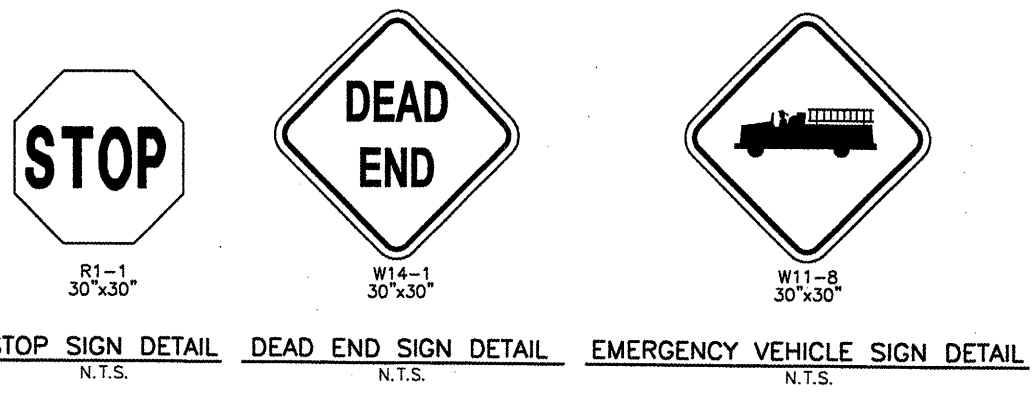
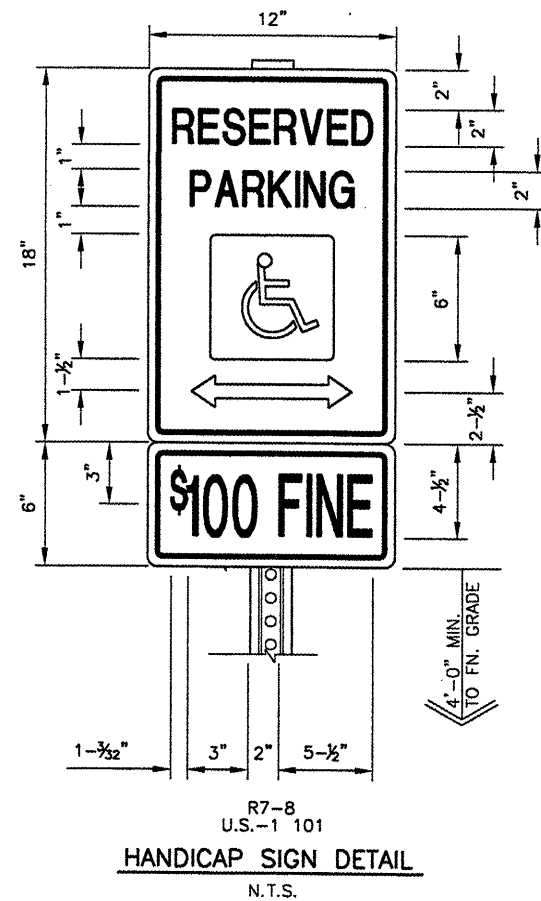
0 1 2  
 THIS BAR IS EQUAL TO 2"  
 AT FULL SCALE (34X22).

BLOOMINGTON-NORMAL AIRPORT AUTHORITY  
 CENTRAL ILLINOIS REGIONAL AIRPORT  
 BLOOMINGTON, ILLINOIS

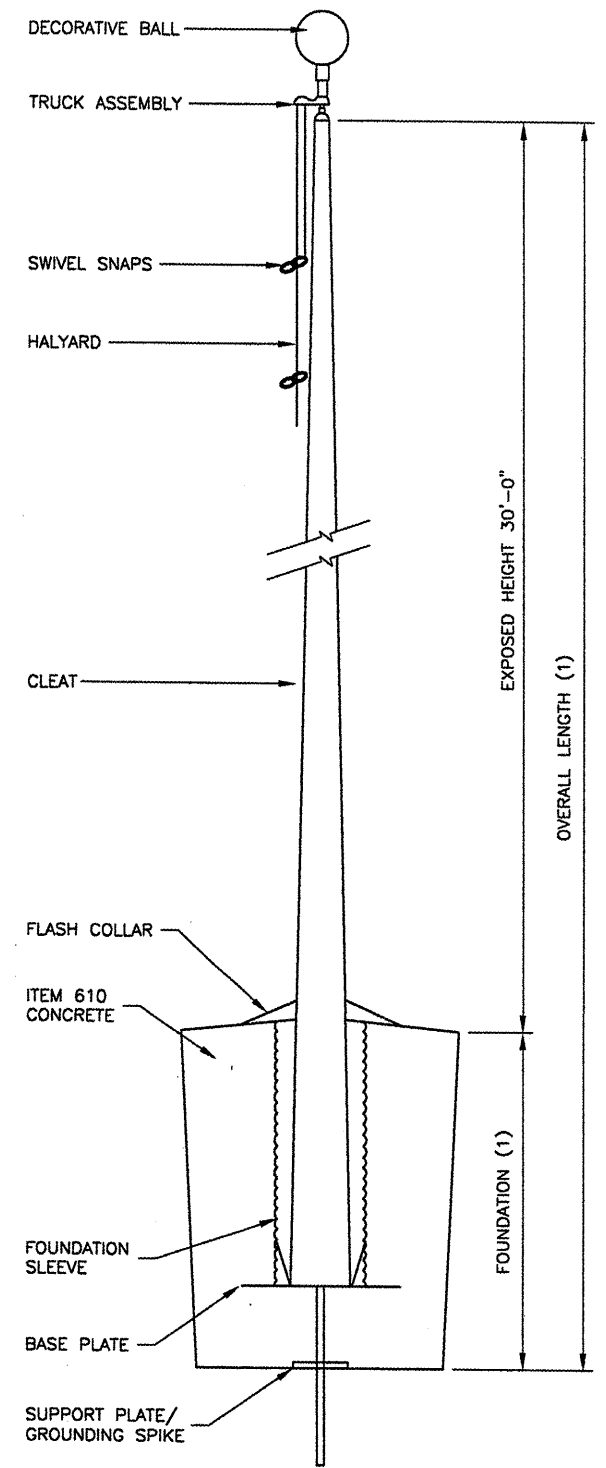
CONSTRUCT NEW ARFF FACILITY  
 MARKING AND SIGNAGE DETAILS 2

© Copyright CMT, Inc.  
**CMT**  
 CRAWFORD, MURPHY & TILLY, INC.  
 CONSULTING ENGINEERS  
 License No. 184-000613

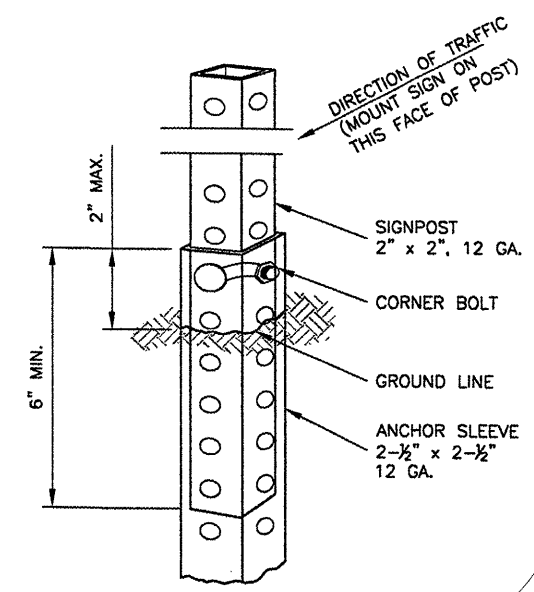
DESIGN BY: RLV  
 DRAWN BY: DPA  
 CHECKED BY: *REN*  
 APPROVED BY: *REN*  
 DATE: 04/01/2008  
 JOB No: 0508509  
 IL PROJ. NO. BMI-3797  
 AIP PROJ. NO. 3-17-0006-46 & 48  
 SHEET 35 OF 66 SHEETS



NOTE:  
 FOR ONE SIGN, THERE SHALL BE A MINIMUM HEIGHT OF 5' TO FINISHED GRADE AND FOR TWO SIGNS, THERE SHALL BE A MINIMUM HEIGHT OF 4' TO FINISHED GRADE FROM THE BOTTOM OF THE SIGN.



(1) - AS REQUIRED BY THE MANUFACTURER  
**FLAGPOLE DETAIL**  
 N.T.S.



**PERFORATED SQUARE STEEL TUBE POST DETAIL**  
 N.T.S.

SIGN AREA (SQ.FT.)	POST TYPE		
	U-CHANNEL	WOOD	PERFORATED SQUARE STEEL TUBING
* 10	1 - 3.0 LB./FT.*	1 - 4" x 4"*	1 - 2" 12 GA.*
* 10 * 16	2 - 3.0 LB./FT.	2 - 4" x 4" * 1 - 4" x 6"*	2 - 2" 12 GA.
* 16 * 24	2 - 3.0 LB./FT.	2 - 4" x 6"	3 - 2" 12 GA.*
* 24 * 30	3 - 3.0 LB./FT.	2 - 4" x 6"	N/A
* 30 * 50	N/A	2 - 6" x 6"	N/A

\* SIGNS GREATER THAN 4 FEET IN WIDTH, EXCEPT DIAMOND SHAPE SIGNS, REQUIRE TWO POSTS.  
 \*\* REQUIRES SLIP BASE PER MANUFACTURER'S RECOMMENDATION.  
 ALL POSTS SHALL BE IMBEDDED A MINIMUM OF 3 FEET.

**POST SIZE REQUIREMENTS**