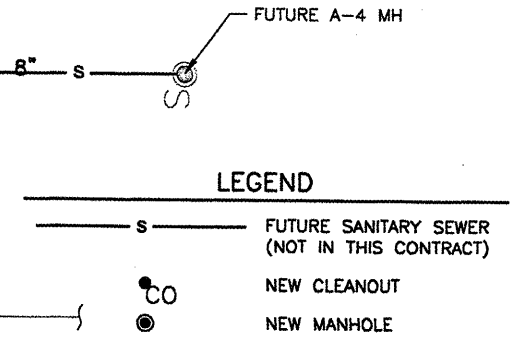
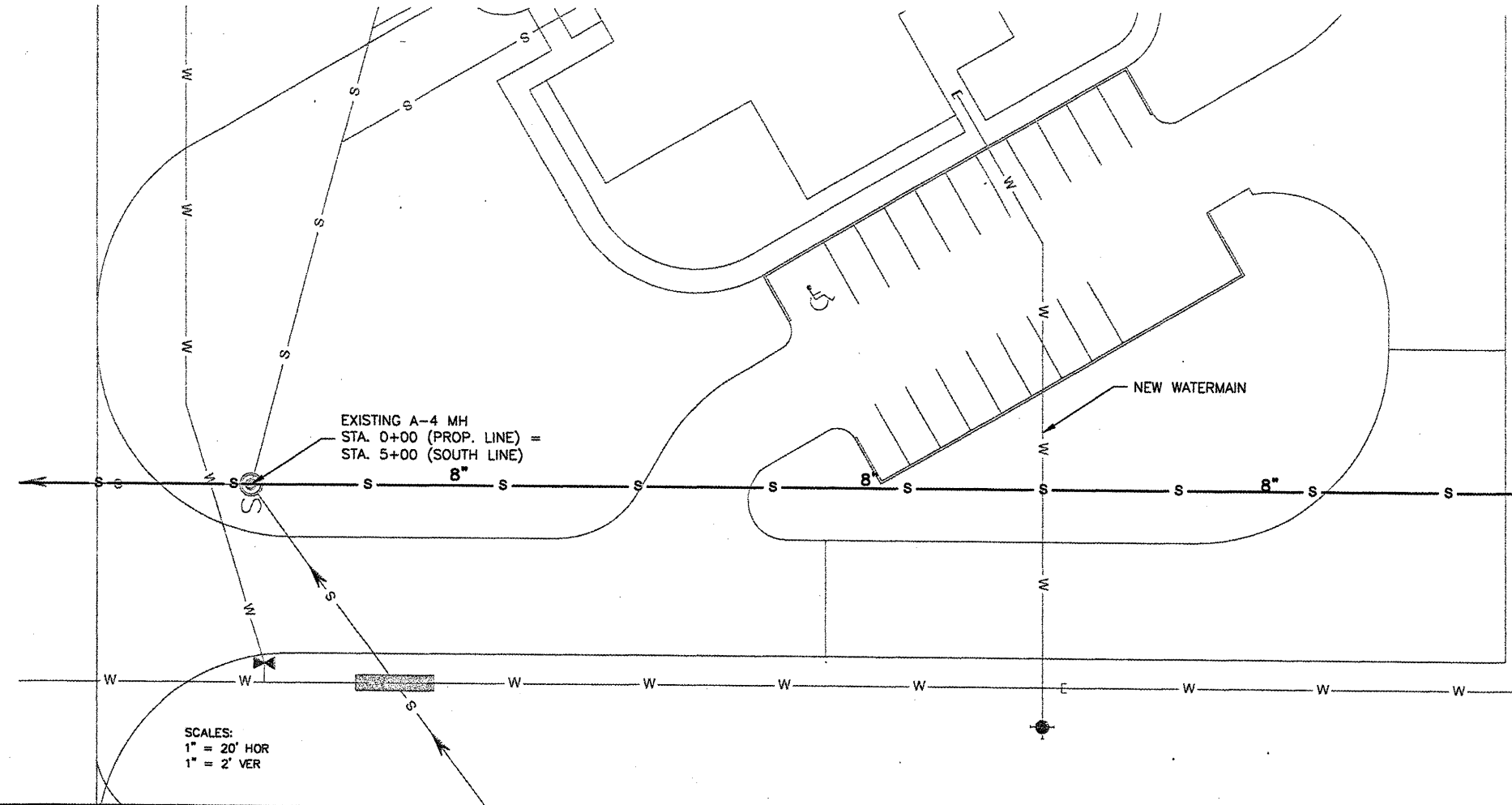
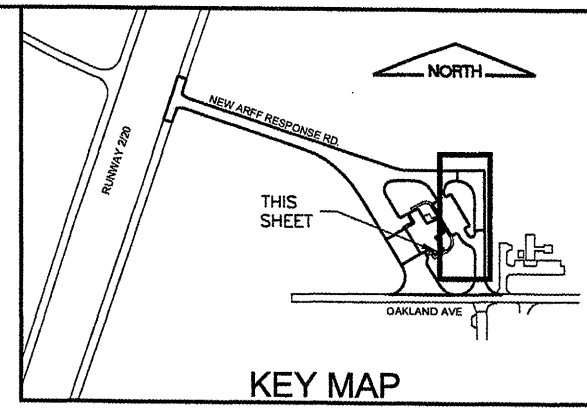
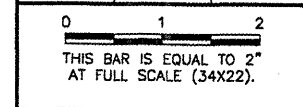


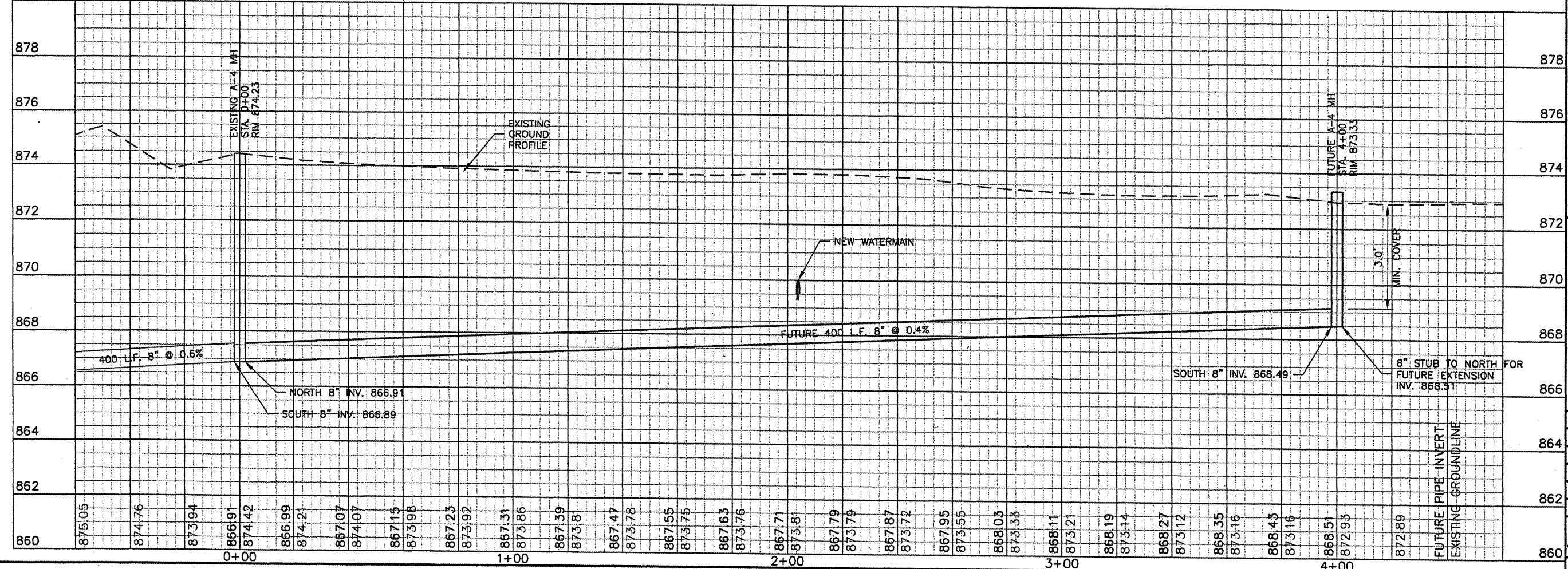
K:\Bloomington\0508509\_BML\_ARFF\Draw\Sheets  
 FILE: RCp01008.dwg  
 UPDATE BY: Kristy Brod  
 PLOT DATE: 4/18/2008 8:34 AM  
 rcp01008  
 SURVEY  
 BASE\_PROPGEO  
 SITE\_KEYMAP  
 BASE\_PROPUTIL

**BL064**

REVISIONS		
NUMBER	BY	DATE



SCALES:  
 1" = 20' HOR  
 1" = 2' VER



**BLOOMINGTON-NORMAL AIRPORT AUTHORITY**  
**CENTRAL ILLINOIS REGIONAL AIRPORT**  
**BLOOMINGTON, ILLINOIS**

**CONSTRUCT NEW ARFF FACILITY**  
**SANITARY SEWER**  
**PLAN & PROFILE 2**

© Copyright CMT, Inc.  
**CMT**  
 CRAWFORD, MURPHY & TILLY, INC.  
 CONSULTING ENGINEERS  
 License No. 184-000613

DESIGN BY:	WHP
DRAWN BY:	DPA
CHECKED BY:	RW
APPROVED BY:	RW
DATE:	04/01/2008
JOB No:	0508509
IL PROJ. NO. BMI-3797	
AIP PROJ. NO. 3-17-0006-46 & 48	
SHEET 39 OF 66 SHEETS	