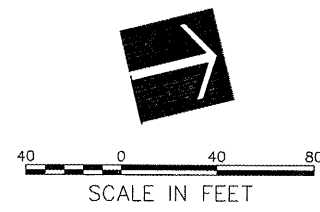


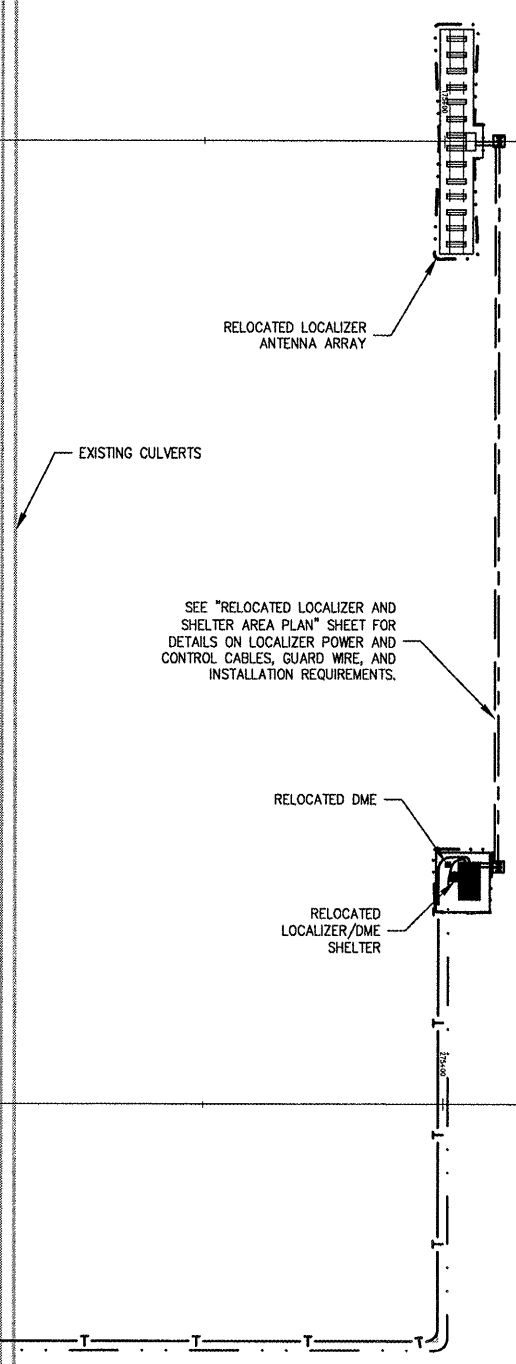
F:\02\085\00840\07A0166\DRAWINGS\LSHEETS\54-LIGHTING PLAN\DWG APR 18, 2008 10:19AM HAUSKIND082

MATCHLINE RUNWAY 2-20 STA. 166+00



**AIRFIELD LIGHTING NOTES**

- FOR NOTES AND LEGEND SEE SHEET 52.
- THE EXISTING LOCALIZER IS A THALES MARK 20A. THE EXISTING DME (DISTANCE MEASURING EQUIPMENT) IS A THALES 415SE DME. COORDINATE RELOCATION AND INSTALLATION WORK WITH THE RESPECTIVE LOCALIZER AND DME MANUFACTURER:  
THALES AIR TRAFFIC MANAGEMENT  
23501 W. 84TH STREET  
SHAWNEE, KANSAS 66227-3296  
PHONE: 913.422.2726  
FAX: 913.422.2962
- RELOCATION OF THE LOCALIZER, DME, AND SHELTER BUILDING WILL BE PAID FOR UNDER ITEM AR127961 RELOCATE LOCALIZER PER LUMP SUM.
- ELECTRICAL HANDHOLES ASSOCIATED WITH THE LOCALIZER RELOCATION WILL BE PAID FOR SEPARATELY UNDER ITEM AR110610 ELECTRICAL HANDHOLE PER EACH.



6 PAIR #19AWG TELEPHONE CABLE TO LOCALIZER/DME SHELTER (AR800933)

3/C #2 600V UG CABLE IN UD (480 VAC FEEDER TO LOCALIZER/DME SHELTER)

LE039



HANSON PROFESSIONAL SERVICES INC.

815 Commerce Drive, Suite 200  
Oak Brook, Illinois 60523  
Telephone: 630.990.3800  
Fax: 630.990.3801

Illinois Professional Design Firm  
Registration No. 184-001084

© Copyright Hanson Professional Service Inc. 2008



JOLIET REGIONAL PORT DISTRICT

1 George Michas Drive  
Romeoville, Illinois 60446  
Telephone: 815.838.9497  
Fax: 815.838.9524

EXTEND RUNWAY 2-20; CONSTRUCT TAXIWAY TURNAROUND

AIP PROJECT NO. 3-17-0140-B42  
IDA PROJECT NO. LOT-3792

No.	Drawing Issue Description	Date	By

Date  
APRIL 18, 2008  
Sheet Title

**LIGHTING PLAN  
RUNWAY 2-20  
STA. 166+00 THRU  
STA. 177+00**

07A0166  
Project Number  
LDH 2/22/08  
Layout By Date  
LDH 2/22/08  
Designed By Date  
RMH 03/20/08  
Reviewed By Date  
LDH  
Drawn By Sheet No.

54