

HANSON PROFESSIONAL SERVICES INC.  
 815 Commerce Drive, Suite 200  
 Oak Brook, Illinois 60523  
 Telephone: 630.990.3800  
 Fax: 630.990.3801

Illinois Professional Design Firm  
 Registration No. 184-001084

© Copyright Hanson Professional Service Inc. 2008

**Chicago-Romeo Airport**

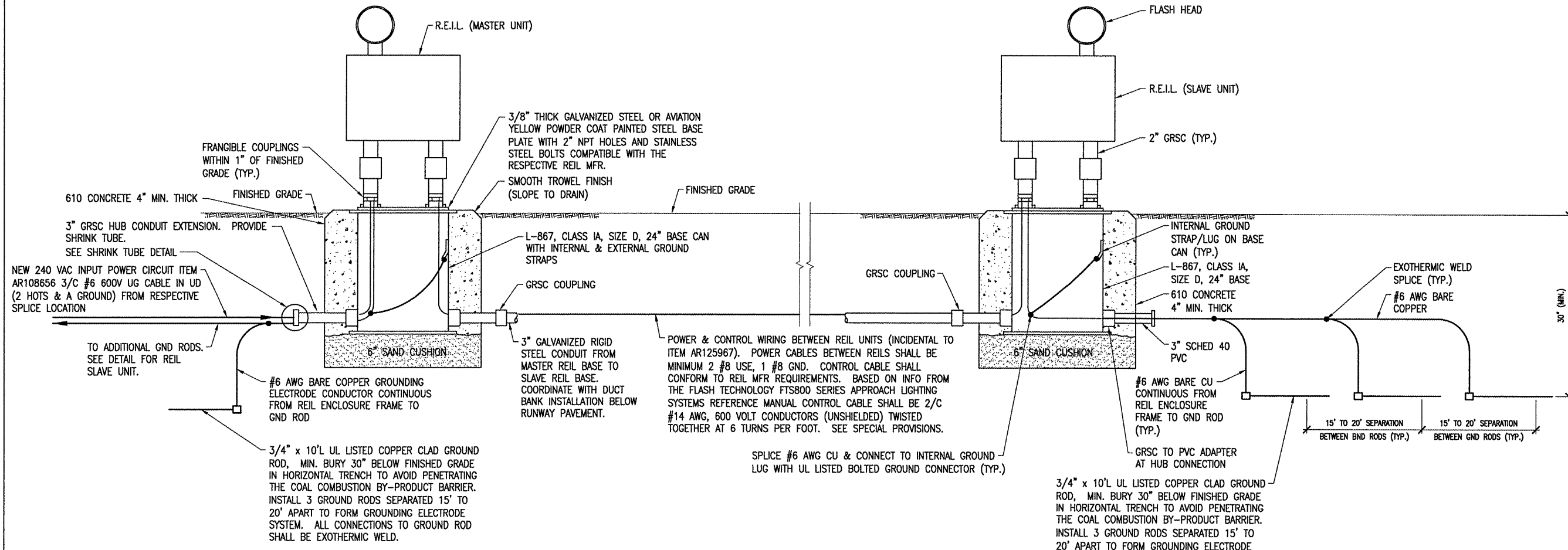
JOLIET REGIONAL PORT DISTRICT

1 George Michas Drive  
 Romeoville, Illinois 60446  
 Telephone: 815.838.9497  
 Fax: 815.838.9524

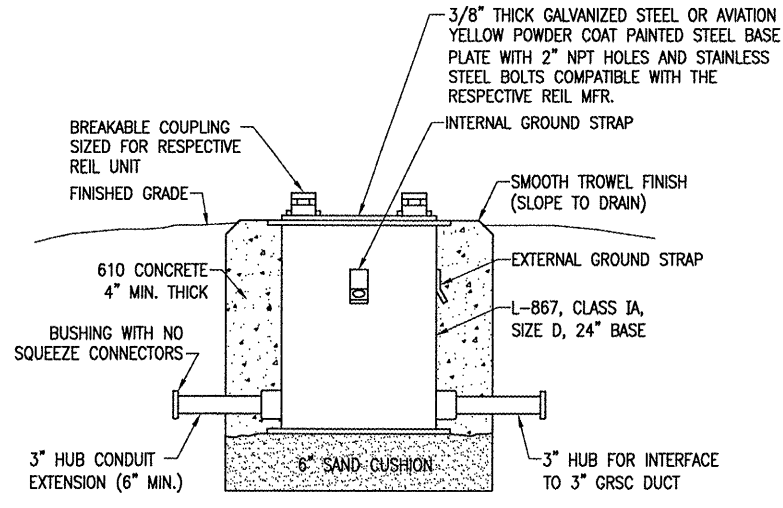
---

EXTEND RUNWAY 2-20: CONSTRUCT TAXIWAY TURNAROUND

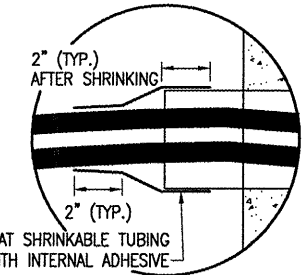
AIP PROJECT NO. 3-17-0140-B42  
 IDA PROJECT NO. LOT-3792



REIL INSTALLATION DETAIL  
 NOT TO SCALE



REIL BASE DETAIL  
 (NOT TO SCALE)



SHRINK TUBE DETAIL  
 (NOT TO SCALE)

REIL RELOCATION NOTES

- THE EXISTING REILS ARE FLASH TECHNOLOGY MODEL FTS 812, FAA TYPE L-849V (VOLTAGE POWERED), STYLE A (UNIDIRECTIONAL, HIGH INTENSITY, ONE BRIGHTNESS STEP).
- REILS SHALL BE AIMED AT ANGLE 10 DEGREES VERTICALLY AND TOED OUT 15 DEGREES FROM THE LINE PARALLEL TO THE RUNWAY CENTERLINE.
- RELOCATION OF REILS WILL BE PAID FOR UNDER ITEM AR125967 RELOCATE REILS PER PAIR.
- ANY AND ALL TRENCHES AND DISTURBED AREAS WILL BE BACKFILLED AND RESTORED TO A SMOOTH GRADE AND SEEDED TO THE SATISFACTION OF THE ENGINEER. ALL TRENCH SETTLEMENT SHALL BE CORRECTED FOR A PERIOD OF ONE YEAR. RESTORATION, GRADING, SEEDING, AND MULCHING OF AREAS DISTURBED DURING THE REIL INSTALLATION AND ASSOCIATED CABLE WILL BE INCIDENTAL TO ITEM AR125967 RELOCATE REILS.
- GROUNDING FOR REILS. GROUNDING FOR REILS SHALL CONFORM TO THE RESPECTIVE REIL MANUFACTURER'S INSTALLATION INSTRUCTIONS, AS DETAILED ON THE PLANS, AND AS SPECIFIED HEREIN. THE POWER CIRCUIT TO MASTER REIL UNIT, AND EACH SLAVE UNIT, SHALL INCLUDE AN EQUIPMENT GROUND WIRE OF THE SAME SIZE AND TYPE AS THE PHASE CONDUCTORS. FURNISH AND INSTALL THREE 3/4-INCH DIAMETER BY 10-FOOT LONG COPPER CLAD GROUND RODS AT EACH REIL UNIT. GROUND RODS SHALL BE BURIED 30" MINIMUM IN HORIZONTAL TRENCH AND BONDED TOGETHER WITH A #6 AWG BARE COPPER GROUNDING ELECTRODE CONDUCTOR TO FORM A GROUNDING ELECTRODE SYSTEM. GROUND RODS SHALL BE SPACED 15' TO 20' APART. DO NOT PENETRATE THE COAL COMBUSTION BY-PRODUCT BARRIER. BOND EACH REIL UNIT HOUSING AND THE REIL BASE CAN TO THE RESPECTIVE GROUNDING ELECTRODE SYSTEM IN ACCORDANCE WITH THE MANUFACTURER'S INSTRUCTIONS WITH A #6 AWG BARE SOLID OR STRANDED (PER REIL MANUFACTURER REQUIREMENTS) COPPER GROUNDING ELECTRODE CONDUCTOR. ALL CONNECTIONS TO GROUND RODS SHALL BE EXOTHERMIC WELD AS MANUFACTURED BY CADWELD, THERMOWELD, OR ULTRAWELD. CONNECTIONS TO REIL UNIT FRAMES SHALL BE AS RECOMMENDED BY THE MANUFACTURER OR WITH UL LISTED GROUNDING CONNECTORS.

NOTE:  
 FOR THE PURPOSE OF ENHANCING SAFETY, EACH BASE MUST HAVE INSTALLED, BY THE MANUFACTURER, AN INTERNAL AND EXTERNAL GROUND STRAP THAT IS AVAILABLE FOR THE PURPOSE OF ATTACHING A GROUND LUG THAT IS CONNECTED TO AN EARTH GROUND OR A SAFETY GROUND CONDUCTOR INSTALLED WITH THE RESPECTIVE CIRCUIT. FOR AIRPORT PROJECTS RECEIVING FEDERAL FUNDS THIS REQUIREMENT IS MANDATORY PER FAA AC 150/5345-42F.

No.	Drawing Issue Description	Date	By

Date: APRIL 18, 2008

Sheet Title

REIL INSTALLATION  
 DETAIL

07A0166  
 Project Number  
 KNL 03/17/08  
 Layout By Date  
 KNL 03/17/08  
 Designed By Date  
 RMH 03/20/08  
 Reviewed By Date  
 MV  
 Drawn By  
 Sheet No.