

BY	
REVISION	
DATE	

LITCHFIELD MUNICIPAL AIRPORT  
LITCHFIELD, ILLINOIS

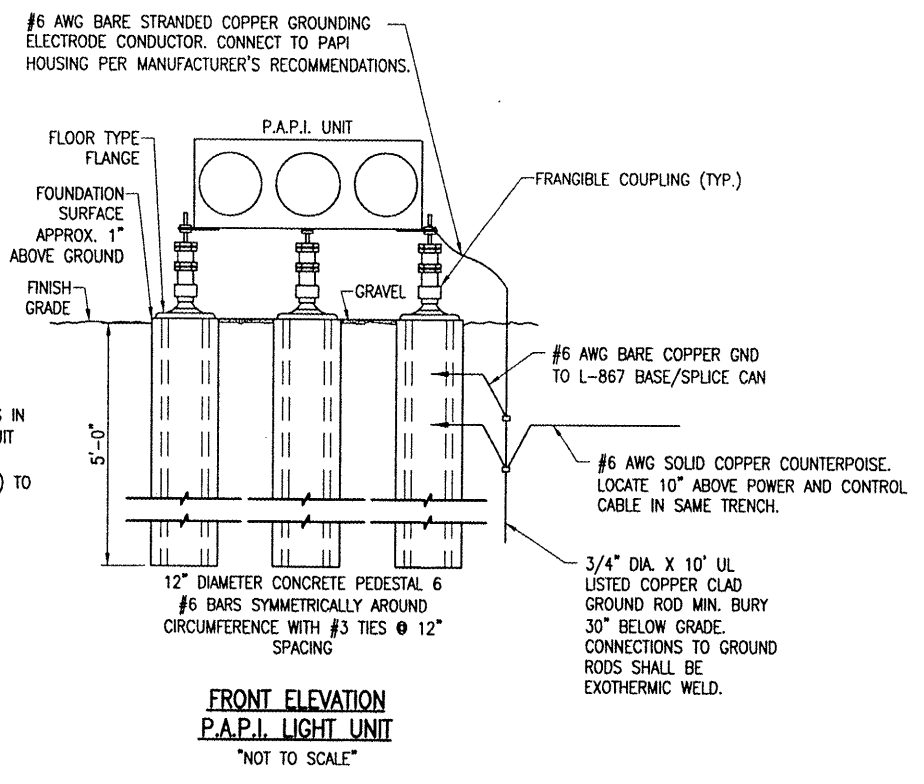
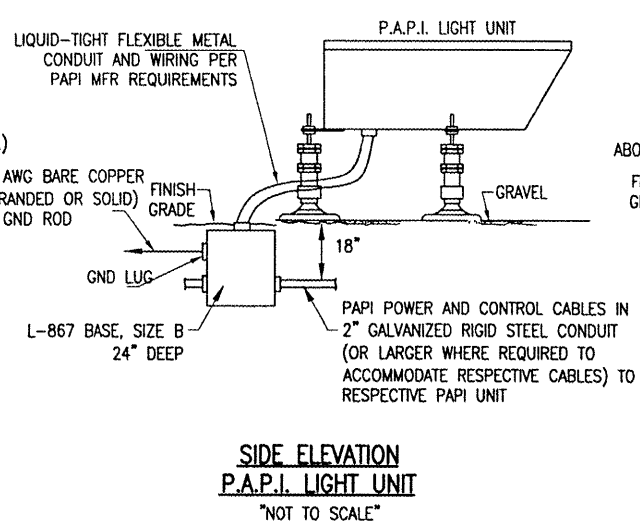
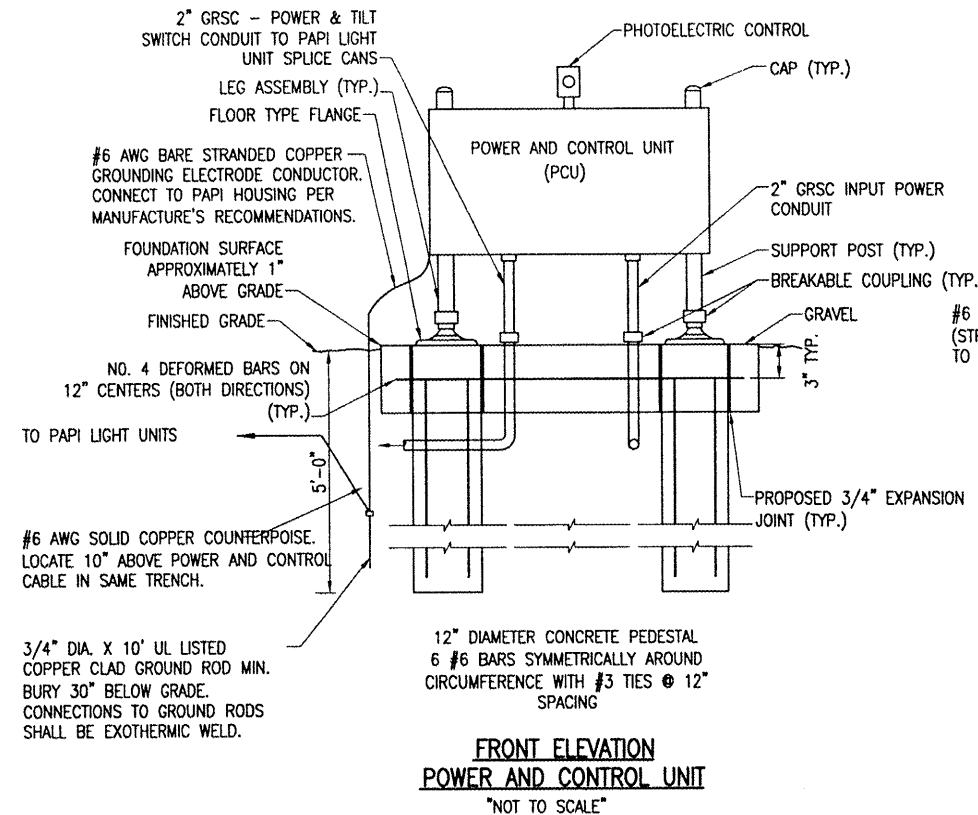
A.I.P. PROJ.: 3-17-0083-B13  
I.L. PROJ.: 3LF-3559

HEL Project No.	814-08RWTD-0800
Filename	R-542ELE.DWG
Scale	N/A
Date	01/29/08
LAYOUT	MOR 01/15/08
DRAWN	MDR 01/15/08
REVIEWED	CAH/KNL 01/29/08

**HANSON**  
Hanson Professional Services Inc.  
1525 South Sixth Street  
Springfield, Illinois 62703-2886  
Offices Nationwide

PROPOSED P.F.C.  
ON RUNWAY 9-27

PROPOSED  
PAPI DETAILS AND NOTES  
RUNWAY 27 END



**P.A.P.I. NOTES**

THE PROPOSED PRECISION APPROACH PATH INDICATOR (PAPI) SYSTEM WILL BE PLACED AT THE LOCATION SHOWN ON SHEET NO.12.

THE PROPOSED CONCRETE PEDESTALS WILL BE AS DETAILED ON THIS SHEET. THE NUMBER OF PEDESTALS CONSTRUCTED FOR EACH PAPI UNIT WILL DEPEND ON THE UNIT SELECTED BY THE CONTRACTOR FOR INSTALLATION.

SIX (6") INCHES OF GRAVEL ON TOP OF BLACK PLASTIC WILL BE PLACED UNDER EACH PAPI UNIT TO HALT VEGETATION GROWTH.

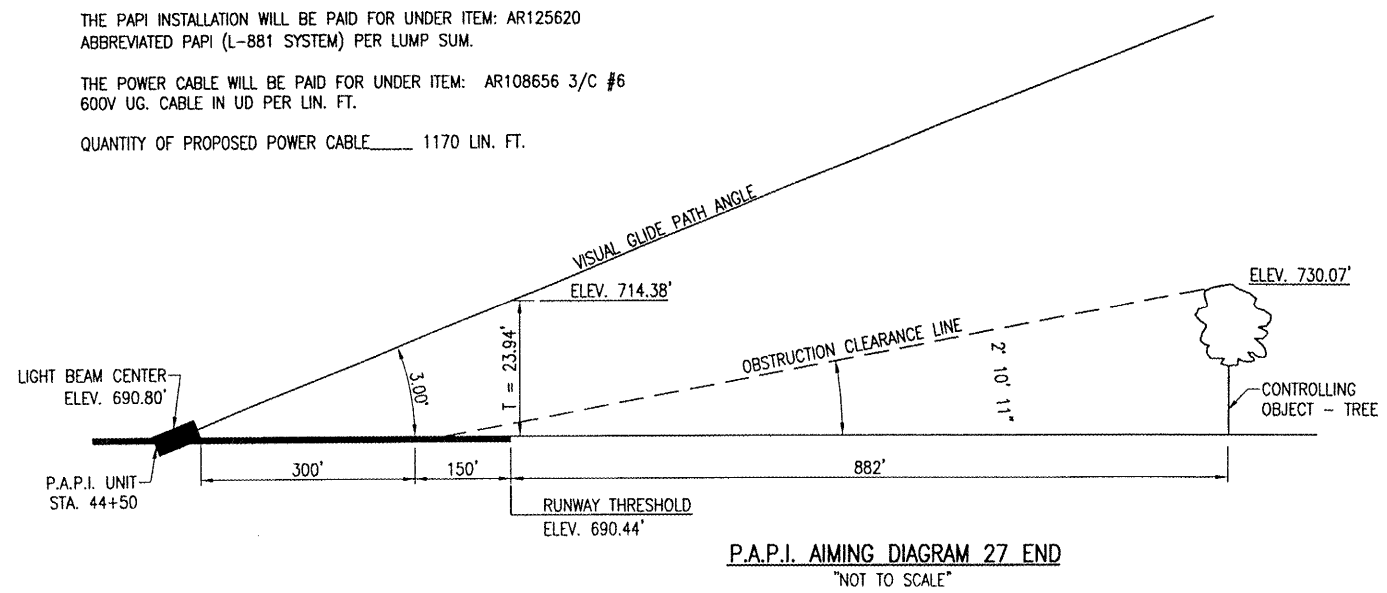
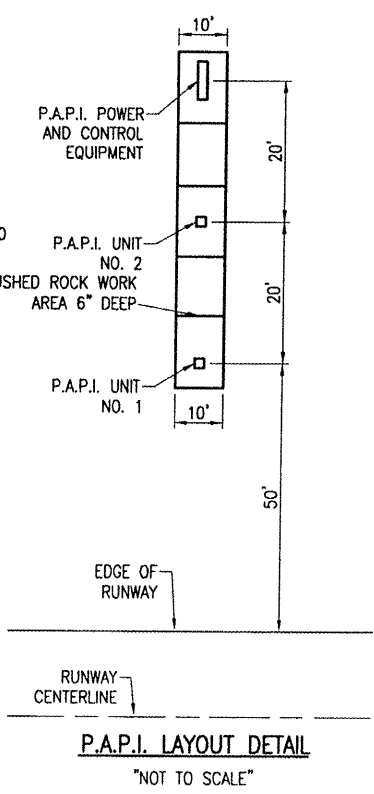
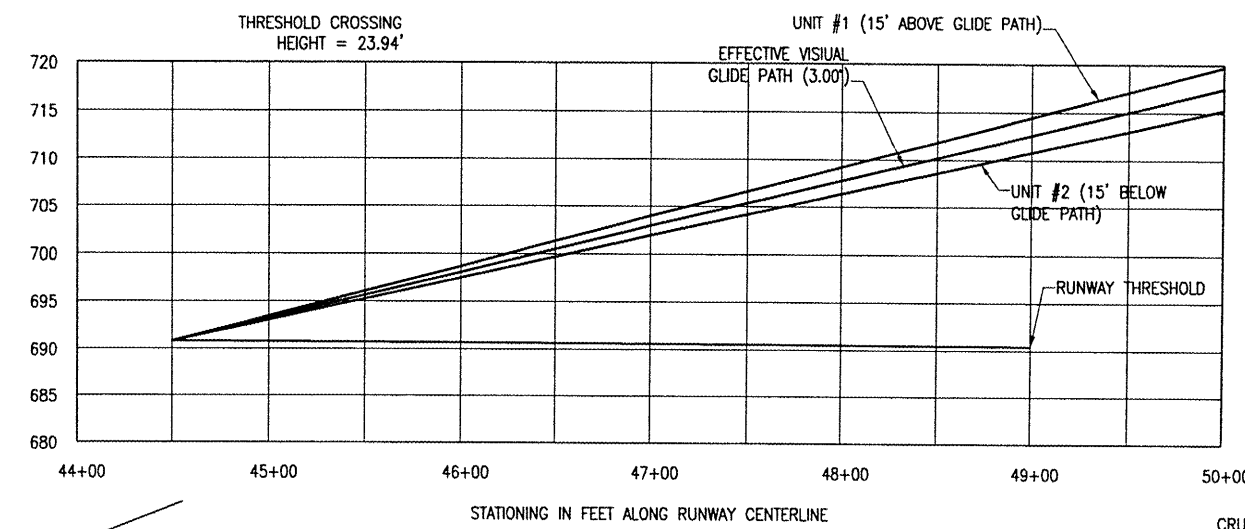
EACH PAPI UNIT WILL BE CONSTRUCTED SUCH THAT THE BEAM CENTERS WILL BE WITHIN ±1" OF ELEVATION 690.80.

THE PROPOSED POWER CABLE TO THE PAPI SYSTEM WILL BE 3-1/C NO. 6, 600V., TYPE XLP-USE UNDERGROUND CABLE IN 1-1/4" UNIT DUCT. THIS CABLE WILL BE TRENCHED IN PLACE AT A MINIMUM DEPTH OF 18" BELOW FINISH GRADE.

THE PAPI INSTALLATION WILL BE PAID FOR UNDER ITEM: AR125620 ABBREVIATED PAPI (L-881 SYSTEM) PER LUMP SUM.

THE POWER CABLE WILL BE PAID FOR UNDER ITEM: AR108656 3/C #6 600V UG. CABLE IN UD PER LIN. FT.

QUANTITY OF PROPOSED POWER CABLE 1170 LIN. FT.



	P.A.P.I. UNIT #1	P.A.P.I. UNIT #2	P AND C UNIT
DISTANCE FROM RUNWAY C	87.5'	107.5'	127.5'
AIMING ANGLE	3°15'	2°45'	N/A
APPROXIMATE GROUND ELEVATION	686.3'	685.7'	685.3'
P.A.P.I. UNIT APERTURE ELEVATION	690.80'	690.80'	N/A

APR 11, 2008 10:31 AM HAGL000382 \\VAIRPORTS\LITCHFIELD\814-08RWTD\SHEETS\R-542ELE.DWG - Layout1