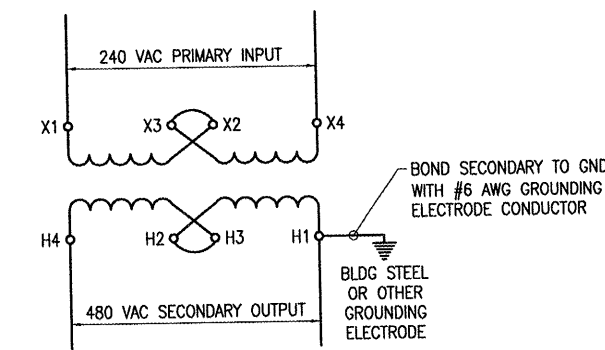


NOTES

- ALL WORK, POWER OUTAGES, AND/OR SHUT DOWN OF EXISTING SYSTEMS SHALL BE COORDINATED WITH THE AIRPORT MANAGER. ONCE SHUT DOWN, THE CIRCUITS SHALL BE LABELED AS SUCH TO PREVENT ACCIDENTAL ENERGIZING OF THE RESPECTIVE CIRCUITS. ALL PERSONNEL SHALL FOLLOW U.S. DEPARTMENT OF LABOR OCCUPATIONAL SAFETY & HEALTH ADMINISTRATION (OSHA) 29 CFR PART 1910 OCCUPATIONAL SAFETY AND HEALTH STANDARDS FOR ELECTRICAL SAFETY AND LOCKOUT/TAGOUT PROCEDURES INCLUDING, BUT NOT LIMITED TO, 29 CFR SECTION 1910.147 THE CONTROL OF HAZARDOUS ENERGY (LOCKOUT/TAGOUT).
- ALL ELECTRICAL EQUIPMENT SHALL BE INSTALLED IN CONFORMANCE WITH NFPA 70 - NATIONAL ELECTRICAL CODE (NEC) MOST CURRENT ISSUE IN FORCE, THE RESPECTIVE EQUIPMENT MANUFACTURER'S DIRECTIONS AND ALL OTHER APPLICABLE LOCAL CODES, LAWS, ORDINANCES AND REQUIREMENTS IN FORCE. ANY INSTALLATIONS WHICH VOID THE U.L. LISTING, ETL LISTING, (OR OTHER THIRD PARTY LISTING) AND/OR THE MANUFACTURER'S WARRANTY OF A DEVICE WILL NOT BE PERMITTED.
- PER NEC 513 THE ENTIRE AREA OF THE HANGAR INCLUDING ANY ADJACENT AND COMMUNICATING AREAS NOT SUITABLE CUT OFF FROM THE HANGAR, SHALL BE CLASSIFIED AS A CLASS I, DIVISION 2 HAZARDOUS LOCATION UP TO A LEVEL 18 INCHES ABOVE THE FLOOR. AREAS IN THE VICINITY OF AIRCRAFT ARE ALSO CLASSIFIED AS HAZARDOUS AS DEFINED BY NEC 513. ALL ELECTRICAL INSTALLATIONS IN CLASSIFIED HAZARDOUS LOCATIONS SHALL BE AVOIDED UNLESS SPECIFICALLY APPROVED FOR SUCH LOCATIONS AND INSTALLED IN CONFORMANCE WITH NEC 500, 501, AND 513 AS WELL AS ANY OTHER APPLICABLE CODES AND REQUIREMENTS
- ALL EQUIPMENT AND MATERIALS SHOWN NOT LABELED AS EXISTING ARE NEW.
- LTFMC DENOTES LIQUID TIGHT FLEXIBLE METAL CONDUIT UL LISTED, SUNLIGHT RESISTANT, & SUITABLE FOR GROUNDING. LIQUID TIGHT FLEXIBLE METAL CONDUIT AND ASSOCIATED FITTINGS SHALL BE U.L. LISTED TO MEET THE REQUIREMENTS OF NEC 350.6. LIQUID TIGHT FLEXIBLE METAL CONDUIT THAT IS USED FOR FLEXIBILITY (INCLUDING CONNECTIONS TO CCR'S & TRANSFORMERS) SHALL REQUIRE AN EXTERNAL BONDING JUMPER OR INTERNAL EQUIPMENT GROUNDING CONDUCTOR PER NEC 350.60. DO NOT INSTALL LTFMC THAT IS NOT UL LISTED.



NOTES: CONFIRM WIRING WITH RESPECTIVE TRANSFORMER MFR.

240 VAC TO 480 VAC STEP UP TRANSFORMER CONNECTION DIAGRAM FOR ACME T-2-53014-S TRANSFORMER

WORK SHOWN ON THIS SHEET FOR THE AWOS POWER IS FOR BASE BID. WORK SHOWN ON THIS SHEET FOR THE APRON LIGHTING IS FOR BID ALTERNATE NO. 1

MB026

BY	
REVISION	
DATE	

MACOMB MUNICIPAL AIRPORT
 MACOMB, ILLINOIS

A.I.P. PROJ.: 3-17-0064-B16
 I.L. PROJ.: MOB-3798

HEI Project No.	08A0004D_0800
Filename	E-602.DWG
Scale	NONE
Date	04-11-08
LAYOUT	KNL 04/08/08
DRAWN	MV 04/08/08
REVIEWED	RAW 04/11/08



Hanson Professional Services Inc.
 1525 South Sixth Street
 Springfield, Illinois 62703-2886
 Offices Nationwide

CONSTRUCT
 RAMP EXPANSION

ELECTRICAL ONE LINE
 DIAGRAM FOR APRON
 LIGHTING & AWOS

ELECTRICAL ONE LINE DIAGRAM FOR APRON LIGHTING & AWOS