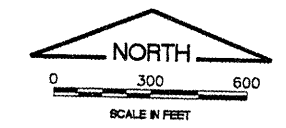
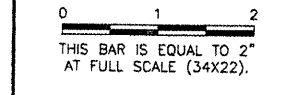


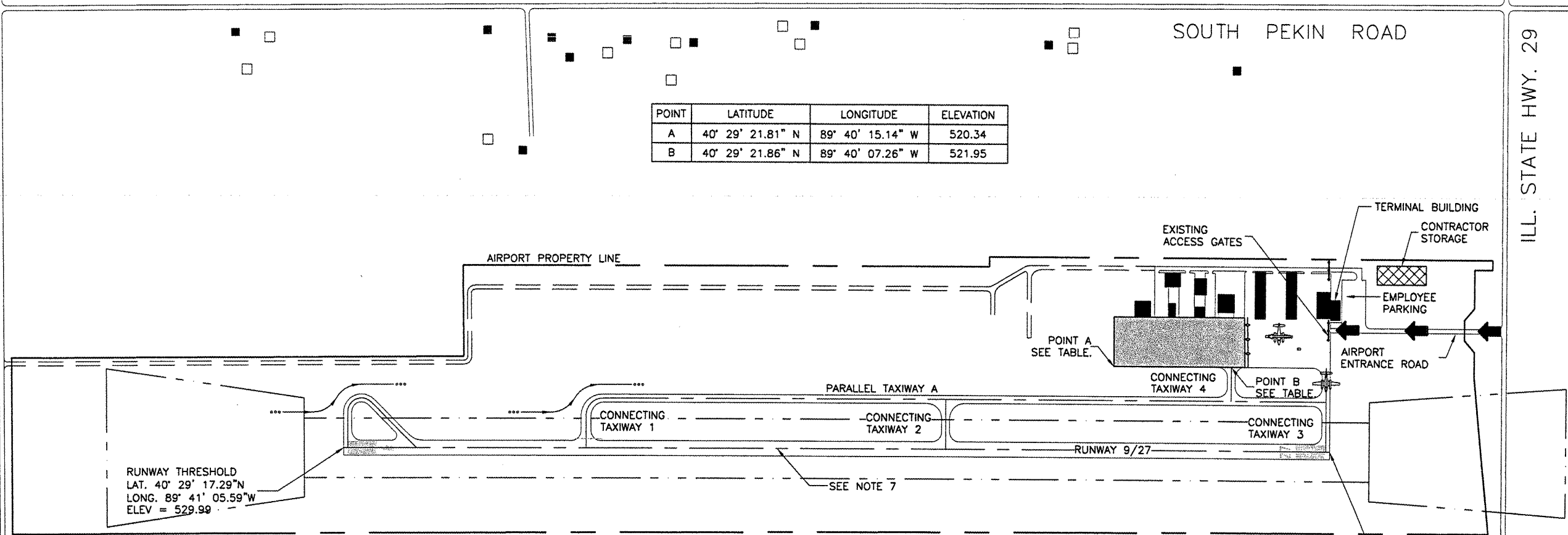
K:\Pekin\060603 W Apron\Draw\Sheets\
 FILE: 03_SitePlan.dwg
 LAYOUT: Layout1
 UPDATE BY: cgroth
 SURVEY BOOK #
 DATE: Fri 4/25/08 10:25am
 XREF DWG: base.dwg
 C:\info.dwg



REVISIONS		
NUMBER	BY	DATE



POINT	LATITUDE	LONGITUDE	ELEVATION
A	40° 29' 21.81" N	89° 40' 15.14" W	520.34
B	40° 29' 21.86" N	89° 40' 07.26" W	521.95

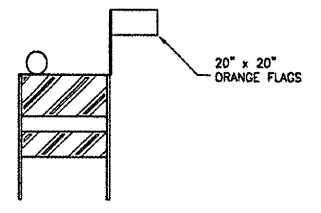


RUNWAY THRESHOLD
 LAT. 40° 29' 17.29"N
 LONG. 89° 41' 05.59"W
 ELEV = 529.99

RUNWAY THRESHOLD
 LAT. 40° 29' 17.71"N
 LONG. 89° 40' 00.88"W
 ELEV = 525.73

GENERAL NOTES

- ALL RUNWAYS, TAXIWAYS, AND MAIN APRON SHALL BE KEPT OPEN TO AIRCRAFT TRAFFIC DURING CONSTRUCTION.
- WHEN CONFLICTS ARISE BETWEEN CONSTRUCTION ACTIVITIES AND AIRCRAFT OPERATIONS AND SAFETY, AIRCRAFT OPERATIONS AND SAFETY SHALL TAKE PRECEDENCE AND SHALL GOVERN. FINAL AUTHORITY IN THE APPROVAL OF CONSTRUCTION SEQUENCING LIES WITH THE AIRPORT DIRECTOR.
- VEHICLES AND EQUIPMENT SHALL NOT BE ALLOWED WITHIN AREAS 95' FROM THE CENTERLINE OF TAXIWAY A OR 250' FROM THE CENTERLINE OF RUNWAY 9/27.
- ALL PAVEMENTS, DRIVES OR ANY OTHER AREAS UTILIZED BY THE CONTRACTOR FOR HAUL ROADS OR STORAGE AREAS SHALL BE MAINTAINED AND REPAIRED IN KIND BY THE CONTRACTOR TO THE SATISFACTION OF THE AIRPORT. NO ADDITIONAL COMPENSATION SHALL BE MADE TO THE CONTRACTOR FOR THIS WORK.
- EXISTING TURF AREAS DISTURBED BY THE CONTRACTOR'S OPERATIONS SHALL BE RESTORED BY HIM AT HIS EXPENSE, TO THE SATISFACTION OF THE ENGINEER
- CONTRACTOR SHALL WORK WITH THE AIRPORT AND THE AIRPORT TENANTS SUCH THAT CONSTRUCTION OPERATIONS AND CURE TIME WILL NOT EXCESSIVELY DELAY HANGAR ACCESS.



FLASHER BARRICADE DETAIL
 N.T.S.

FLASHER BARRICADE NOTES

- FLASHERS TO BE BATTERY OPERATED, LENS TO BE RED AND BE ABLE TO ROTATE 90 DEGREES.
- SANDBAGS TO BE PLACED ON EACH SUPPORT BRACE AS REQUIRED TO PREVENT DISPLACEMENT BY WIND, JET OR PROP BLAST.
- NO SEPARATE PAYMENT WILL BE MADE FOR THIS ITEM. COSTS SHALL BE CONSIDERED INCIDENTAL TO THE PROJECT.
- PLACE AT 20' INTERVALS.

LEGEND

- WORK LIMITS
- CONTRACTOR'S STAGING AND STORAGE
- BARRICADES IDOT TYPE 1 WITH RED LIGHTS AND 20"x 20" ORANGE FLAGS AT 20' SPACING
- CONTRACTOR ACCESS ROAD
- AIR TRAFFIC ACCESS
- CONTRACTOR AND AIRCRAFT ACCESS

PEKIN MUNICIPAL AIRPORT
PEKIN, TAZEWELL COUNTY, ILLINOIS
REHABILITATE WEST PORTION OF GENERAL AVIATION RAMP
AIRPORT SITE PLAN

© Copyright CMT, Inc.
CMT
 CRAWFORD, MURPHY & TILLY, INC.
 CONSULTING ENGINEERS
 License No. 184-000613

DESIGN BY:	CBG
DRAWN BY:	CMT
CHECKED BY:	<i>CBG</i>
APPROVED BY:	<i>SM</i>
DATE:	5/02/2008
JOB No:	05069-03-00
IL PROJECT:	C15-3802
A.I.P. PROJECT:	3-17-0078-B10
SHEET	2 OF 3 SHEETS