

K:\Sports\0641203 Widen Runway\Draw\Sheets
 FILE: DRAINPLAN.dwg
 UPDATE BY: Kristy Brod
 PLOT DATE: 4/4/2008 1:03 PM
 BASE_PROPSITE
 BASE_EXISTOPO
 BASE_PROPGEO
 BASE_PROPELEC

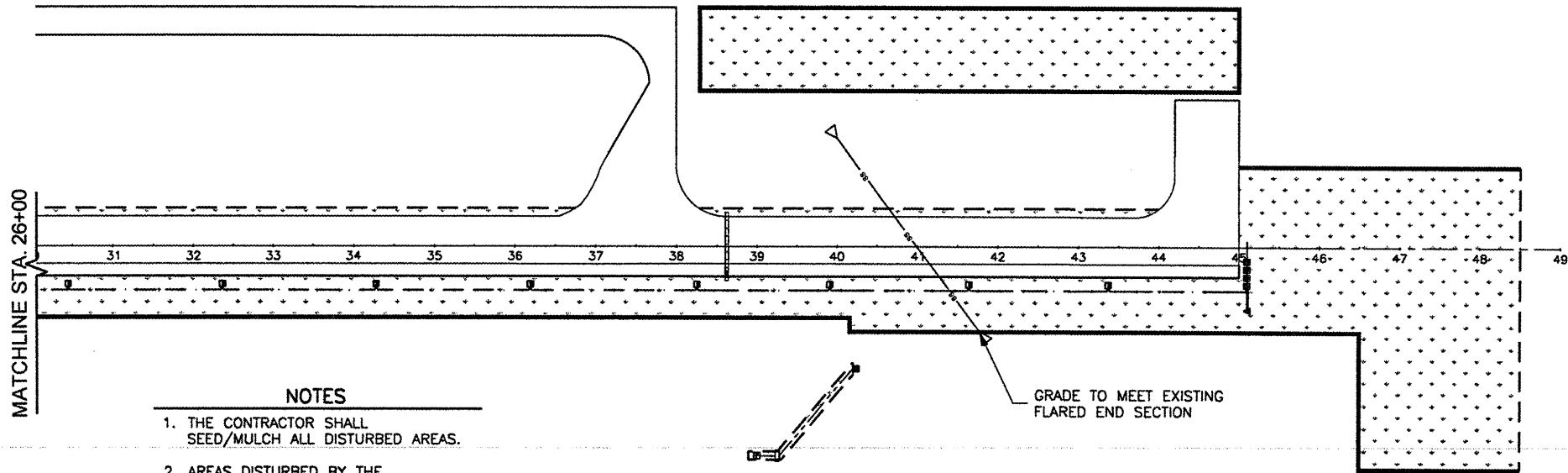
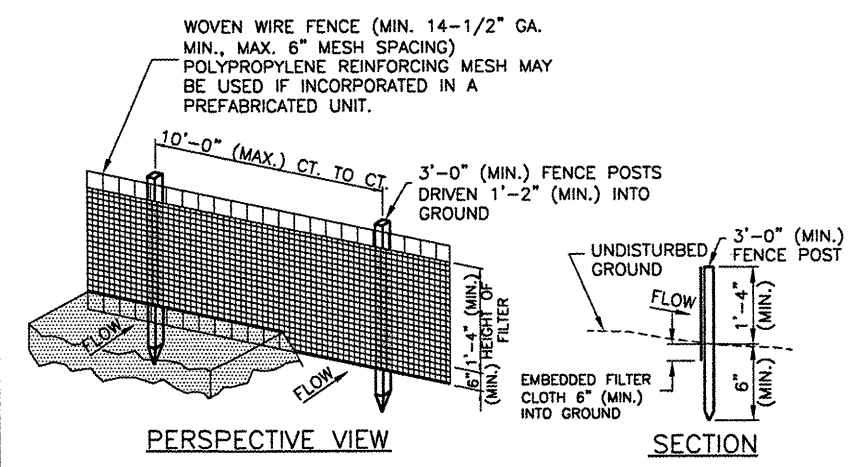
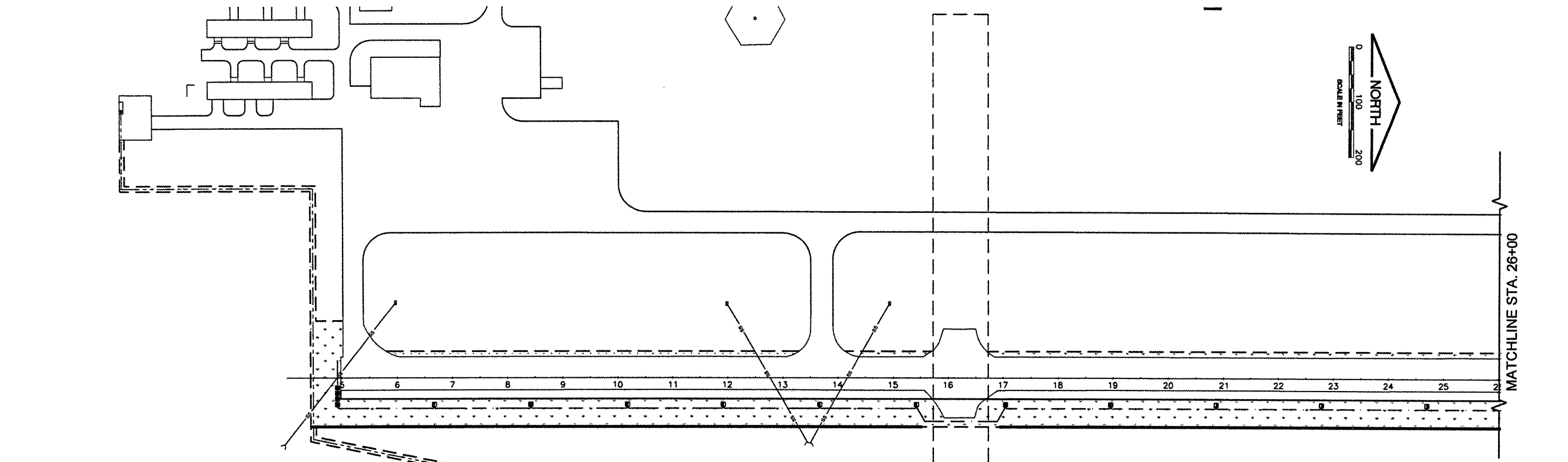
REVISIONS		
NUMBER	BY	DATE

0 1 2
 THIS BAR IS EQUAL TO 2" AT FULL SCALE (34X22).

SPARTA COMMUNITY AIRPORT
 HUNTER FIELD
 SPARTA, ILLINOIS
 WIDEN AND OVERLAY RUNWAY 18/36
 DRAINAGE &
 EROSION CONTROL PLAN

© Copyright CMT, Inc.
CMT
 CRAWFORD, MURPHY & TILLY, INC.
 CONSULTING ENGINEERS
 License No. 184-000610

DESIGN BY:	KLB
DRAWN BY:	CMT
CHECKED BY:	JEF
APPROVED BY:	JEF
DATE:	03/21/2008
JOB No:	0641203
IL PROJ. NO.	SAR-3652
AIP PROJ. NO.	3-17-0094-B9
SHEET 16 OF 28 SHEETS	



- NOTES**
- WOVEN WIRE FENCE TO BE FASTENED SECURELY TO FENCE POSTS WITH WIRE TIES OR STAPLES.
 - FILTER CLOTH TO BE FASTENED SECURELY TO WOVEN WIRE FENCE WITH TIES SPACED EVERY 2'-0" AT TOP AND MID SECTION.
 - WHEN TWO SECTIONS OF FILTER CLOTH ADJOIN EACH OTHER THEY SHALL BE OVERLAPPED BY 6" MINIMUM AND FOLDED.
 - MAINTENANCE SHALL BE PERFORMED AS NEEDED AND MATERIAL REMOVED WHEN "BULGES" DEVELOP IN THE SILT FENCE. MAINTENANCE, WHICH INCLUDES THE REPLACEMENT OF DAMAGED FENCE SHALL BE CONSIDERED INCIDENTAL TO THE COST OF THE EROSION CONTROL FENCE.
- POSTS: STEEL EITHER T OR U TYPE OR 2" HARDWOOD.
 FENCE: WOVEN WIRE, 14-1/2" GA. 6" MAX. MESH OPENING POLYPROPYLENE MESH, IF INCORPORATED IN PREFAB UNIT.
 FILTER CLOTH: FILTER X, MIRAF1100X, STABILINKA T140N OR EQUAL.
 PREFABRICATED UNIT: GEOFAB ENVIRONFENCE, GSI SILT FENCE WITH REINFORCING MEAH OR EQUAL.

- NOTES**
- THE CONTRACTOR SHALL SEED/MULCH ALL DISTURBED AREAS.
 - AREAS DISTURBED BY THE CONTRACTOR'S OPERATIONS OUTSIDE OF THE SEEDING LIMITS SHALL BE RESTORED BY THE CONTRACTOR TO THE SATISFACTION OF THE AIRPORT AT NO ADDITIONAL COST TO THE CONTRACT.
 - THE RESIDENT ENGINEER SHALL DETERMINE THE FINAL TURFING LIMITS & SILT FENCE LOCATIONS.
 - ALL EROSION CONTROL MEASURES SHALL BE INSTALLED PRIOR TO BEGINNING EARTHWORK.
 - CONTRACTOR SHALL MAINTAIN EROSION CONTROL MEASURES THROUGHOUT THE DURATION OF THE PROJECT UNTIL TURF IS COMPLETELY ESTABLISHED.

LEGEND

	PROPOSED SEEDING AND MULCHING
	PROPOSED SILT FENCE
	EXISTING INLET
	EXISTING FLARED END SECTION
	RELOCATED FLARED END SECTION
	TURFING LIMITS
	EXISTING STORM SEWER PIPE
	PROPOSED STORM SEWER PIPE