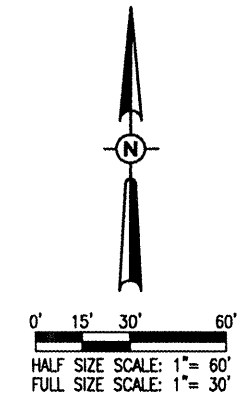


THE LOCATION, SIZE AND TYPE OF MATERIAL OF EXISTING UNDERGROUND UTILITIES INDICATED ON THE PLANS IS NOT REPRESENTED AS BEING ACCURATE, SUFFICIENT OR COMPLETE. IT SHALL BE THE CONTRACTOR'S RESPONSIBILITY TO DETERMINE THE ACTUAL LOCATION OF ALL SUCH FACILITIES, INCLUDING SERVICE CONNECTIONS TO UNDERGROUND UTILITIES. PRIOR TO CONSTRUCTION, THE CONTRACTOR SHALL NOTIFY THE UTILITY COMPANIES OF HIS OPERATIONAL PLANS AND SHALL OBTAIN FROM THE RESPECTIVE UTILITY COMPANIES DETAILED INFORMATION AND ASSISTANCE RELATIVE TO THE LOCATION OF THEIR FACILITIES AND THE WORKING SCHEDULE OF THE COMPANIES FOR REMOVAL OR ADJUSTMENT WHERE REQUIRED. IN THE EVENT AN UNEXPECTED UTILITY INTERFERENCE IS ENCOUNTERED DURING CONSTRUCTION, THE CONTRACTOR SHALL IMMEDIATELY NOTIFY THE UTILITY COMPANY OF JURISDICTION. THE ENGINEER SHALL ALSO BE IMMEDIATELY NOTIFIED. ANY SUCH MAINS AND SERVICES SHALL BE RESTORED TO SERVICE AT ONCE AND PAID FOR BY THE CONTRACTOR AT NO ADDITIONAL COST TO THE CONTRACT.

CALL J.U.L.I.E. FOR UTILITY INFORMATION AT 1-800-892-0123.

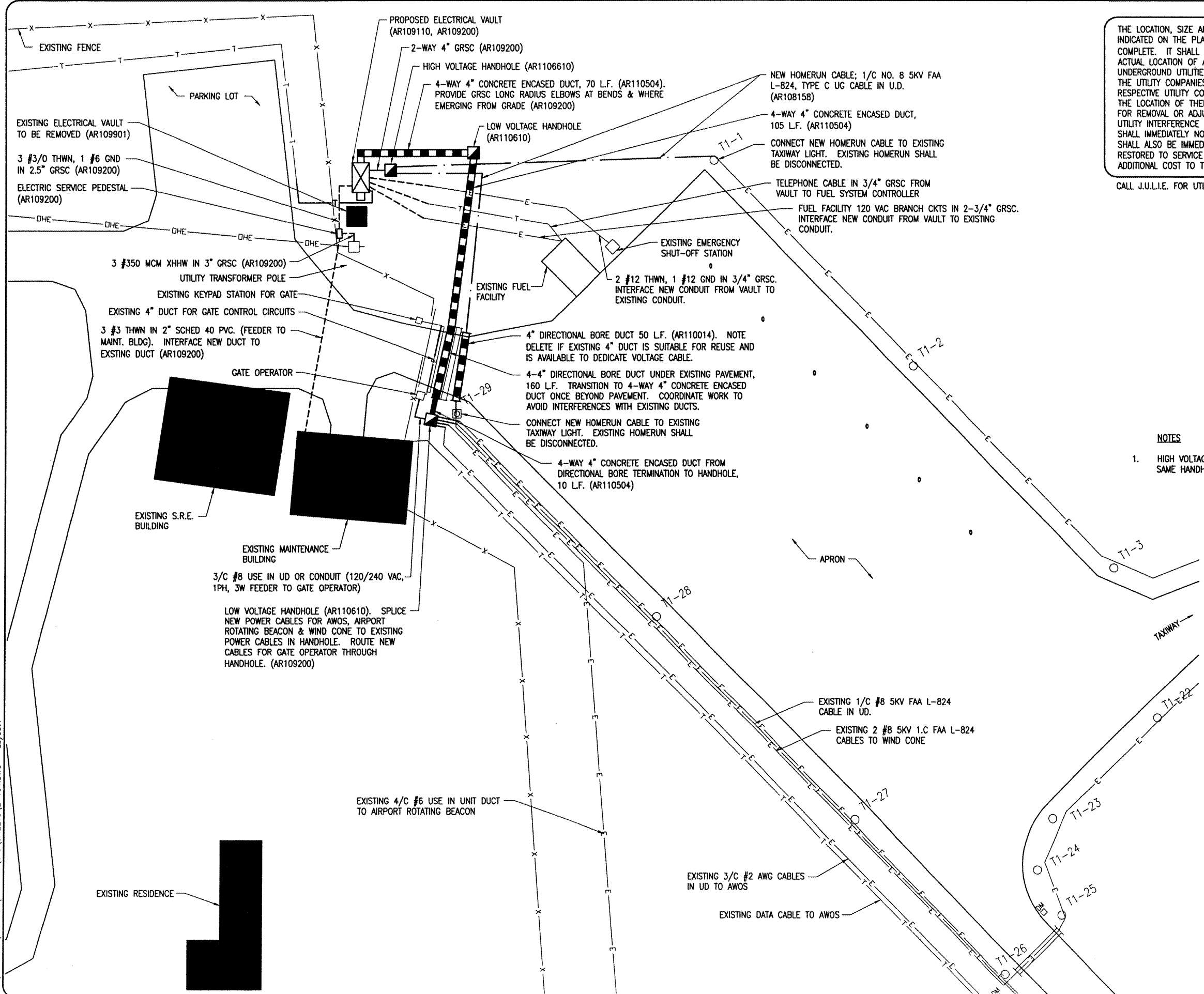


NOTES

- 1. HIGH VOLTAGE AND LOW VOLTAGE CABLES SHALL NOT BE INSTALLED IN THE SAME HANDHOLE, WIREWAY, OR DUCT.

LEGEND

- EXISTING PAVEMENT
- EXISTING BUILDINGS
- EXISTING FENCE
- EXISTING TELEPHONE LINE
- EXISTING GAS LINE
- EXISTING OVERHEAD ELECTRIC
- EXISTING UNDERGROUND ELECTRIC
- EXISTING GUY WIRE
- EXISTING ROTATING BEACON
- EXISTING ELECTRICAL VAULT
- EXISTING POWER POLE
- EXISTING TAXIWAY EDGE LIGHT STAKE MOUNT
- EXISTING TAXIWAY EDGE LIGHT BASE MOUNT
- EXISTING RUNWAY EDGE LIGHT
- PROPOSED CABLE IN DUCT
- PROPOSED 1/C NO. 8 5KV CABLE IN UD
- PROPOSED DUCT
- PROPOSED ELECTRICAL HANDHOLE
- PROPOSED VAULT



MAY 13, 2008 3:11 PM HINT001214 I:\AIRPORTS\SAVANNA\07A0144\CAD\SHEETS\E-101.DWG - Layout1

Table with columns: DATE, REVISION, BY

TRI-TOWNSHIP AIRPORT SAVANNA, CARROLL COUNTY ILLINOIS

Table with columns: REVISION, DATE, BY



CONSTRUCT NEW VAULT PROPOSED AIRPORT VAULT SITE PLAN