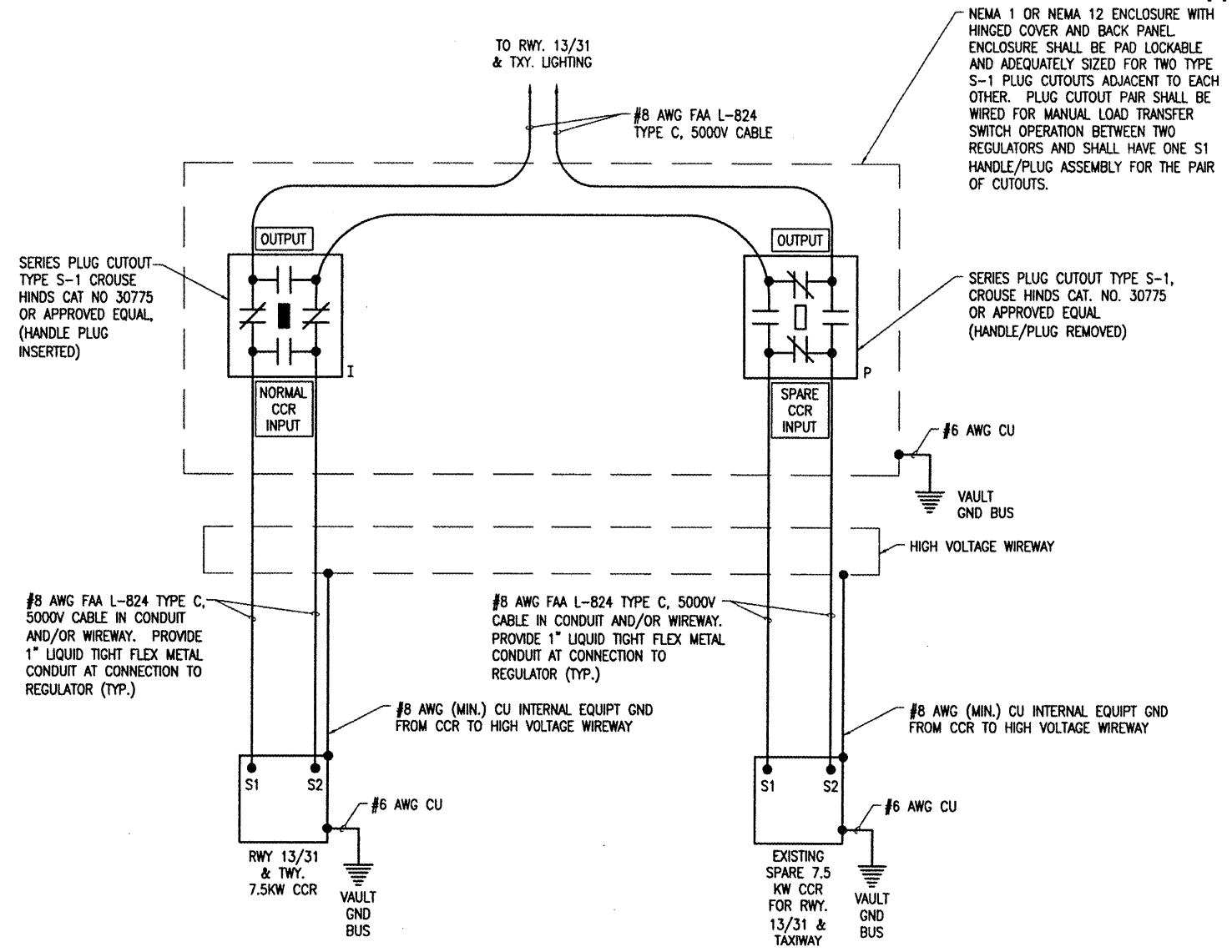


**SERIES PLUG CUTOUT MOUNTING DETAIL
FOR RUNWAY & TAXIWAY CIRCUIT**



HIGH VOLTAGE WIRING SCHEMATIC

NOTES

1. PROVIDE PHENOLIC ENGRAVED LEGEND PLATES FOR EACH CONSTANT CURRENT REGULATOR NOTING THE REGULATOR DESIGNATION AND THE RUNWAY OR TAXIWAY SERVED.
2. EACH PLUG CUTOUT CABINET SHALL BE FURNISHED WITH A PHENOLIC ENGRAVED LEGEND PLATE THAT IDENTIFIES THE RESPECTIVE CIRCUIT OR REGULATOR. INCLUDE AN ADDITIONAL LEGEND PLATE LABELED "CAUTION OPERATE CUTOUTS WITH CCR SHUT OFF". FURNISH & INSTALL A WARNING LABEL FOR CUTOUT ENCLOSURE TO WARN PERSONS OF POTENTIAL ARC FLASH HAZARDS, PER THE REQUIREMENTS OF NEC 110.16 "FLASH PROTECTION".
3. PROVIDE PHENOLIC ENGRAVED LEGEND PLATES FOR EACH CUTOUT TO IDENTIFY THE RESPECTIVE CUTOUT INPUT CONNECTION AND THE RESPECTIVE CUTOUT OUTPUT CONNECTION.
4. PROVIDE ADEQUATE WORKING SPACE IN FRONT OF EACH CUTOUT ENCLOSURE TO MEET NEC CLEARANCE REQUIREMENTS.
5. PROVIDE WARNING SIGN ON VAULT DOOR LABELED "DANGER - HIGH VOLTAGE - KEEP OUT" PER THE REQUIREMENTS OF NEC 110.34 (C).
6. LIQUID TIGHT FLEXIBLE METAL CONDUIT AND ASSOCIATED FITTINGS SHALL BE U.L. LISTED TO MEET THE REQUIREMENTS OF NEC 350.6, SUITABLE FOR GROUNDING AND SUNLIGHT RESISTANT. LIQUID TIGHT FLEXIBLE METAL CONDUIT THAT IS USED FOR FLEXIBILITY (INCLUDING CONNECTIONS TO CCR'S & TRANSFORMERS) SHALL REQUIRE AN EXTERNAL BONDING JUMPER OR INTERNAL EQUIPMENT GROUNDING CONDUCTOR PER NEC 350.60. EXTERNAL BONDING JUMPERS USED WITH CCR INSTALLATIONS SHALL BE #6 AWG COPPER (MINIMUM). DO NOT INSTALL LIQUID TIGHT FLEXIBLE METAL CONDUIT THAT IS NOT UL LISTED.
7. CROUSE-HINDS CAT. NO. 30771, (MODEL-3) SERIES PLUG CUTOUTS ARE NOT ACCEPTABLE, BECAUSE THE HANDLE IS NOT REMOVABLE. OTHER CUTOUTS THAT DO NOT FUNCTION THE SAME AS CROUSE-HINDS CAT. NO. 30775 (MODEL-2) ARE NOT ACCEPTABLE.
8. HIGH VOLTAGE & LOW VOLTAGE CIRCUITS SHALL NOT BE INSTALLED IN THE SAME WIREWAY.
9. BOND ALL REGULATORS TO THE RESPECTIVE VAULT GROUND BUS WITH A DEDICATED #6 AWG BONDING JUMPER FOR EACH REGULATOR.

LEGEND

- "I" DENOTES PLUG CUTOUT WITH PLUG INSERTED
- "P" DENOTES PLUG CUTOUT WITH PLUG PULLED
- "CCR" DENOTES CONSTANT CURRENT REGULATOR

BY	
REVISION	
DATE	
TRI-TOWNSHIP AIRPORT SAVANNA, CARROLL COUNTY ILLINOIS	
I.P. Project No. 07A0144D-0800 File Name: E-604.DWG Scale: NONE Date: 05/13/08	A.I.P. PROJ.: 3-17-0091-B14 I.L. PROJ.: SFY-3782
LAYOUT: KNL 01/02/08 DRAWN: MV 01/03/08 REVIEWED: CAH 02/08/08	
Hanson Professional Services Inc. 1525 South Sixth Street Springfield, Illinois 62703-2886 Offices Nationwide	
CONSTRUCT NEW VAULT	HIGH VOLTAGE WIRING SCHEMATIC
13 13 of 24 sheets	

MAY 13, 2008 2:59 PM KINCA00394
 I:\AIRPORTS\SAVANNA\07A0144\CAD\SHEETS\E-604.DWG - Work