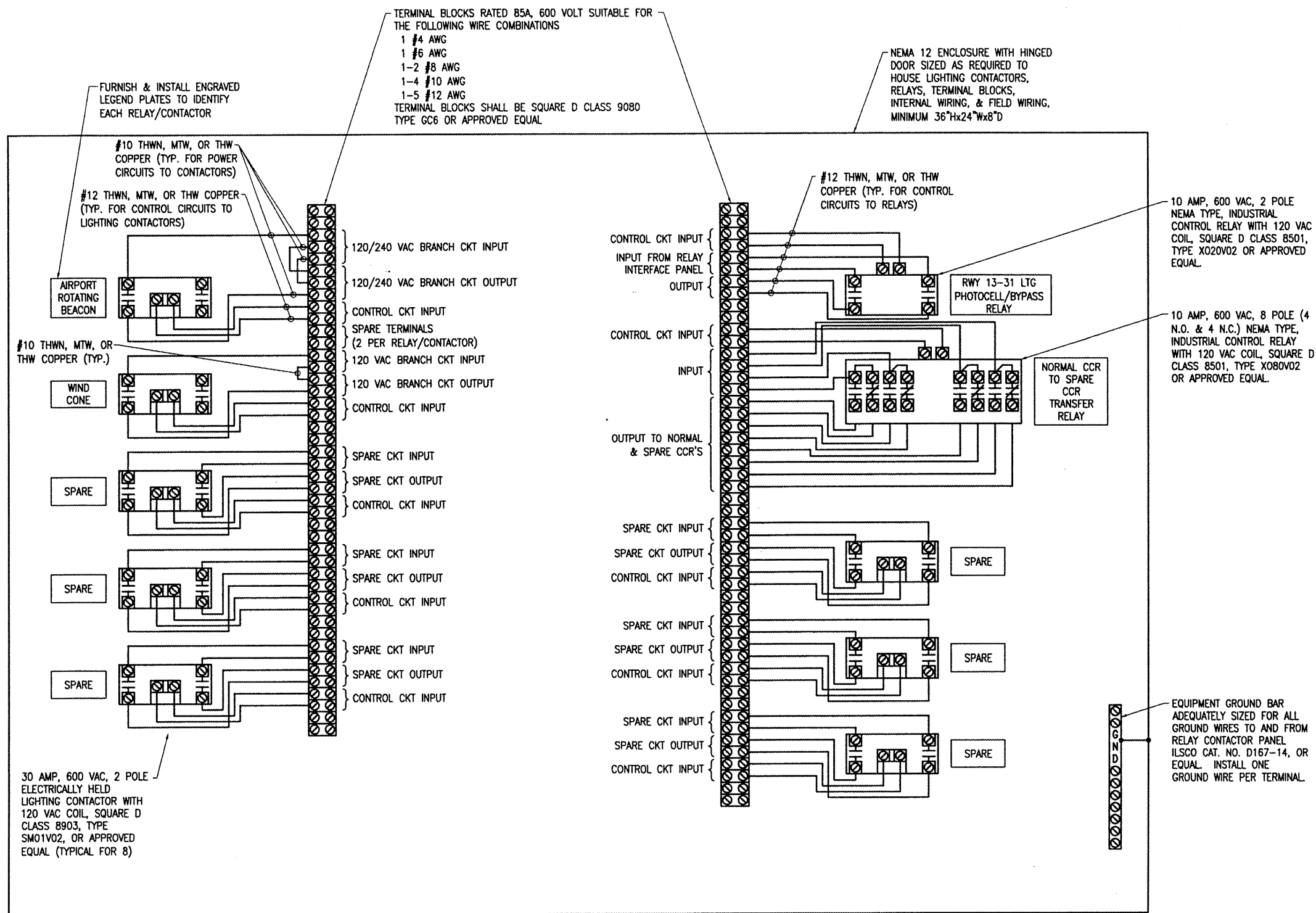


NOTES

- 15 AMP & 20 AMP INPUT POWER/BRANCH CIRCUITS SHALL BE #10 AWG COPPER THWN FROM THE RESPECTIVE POWER SOURCE TO THE LIGHTING CONTACTOR/RELAY PANEL. 30 AMP INPUT POWER/BRANCH CIRCUITS SHALL BE #8 AWG COPPER THWN (MIN.) FROM THE RESPECTIVE POWER SOURCE TO THE LIGHTING CONTACTOR/RELAY PANEL.
- INPUT CONTROL CIRCUITS SHALL BE #12 AWG COPPER THWN.
- FOR 120 VAC BRANCH CIRCUITS THE NEUTRAL CONDUCTOR SHALL NOT BE SWITCHED THROUGH THE RELAY CONTACTS. USE TERMINAL BLOCKS TO TRANSITION FROM VAULT BRANCH CIRCUIT WIRING TO FIELD WIRING.
- THE AIRPORT ROTATING BEACON CIRCUIT SHALL HAVE PHASE "A" SWITCHED THROUGH THE LIGHTING CONTACTOR. PHASE "B" SHALL BE UNSWITCHED FROM THE POWER SOURCE TO THE CONTROL PANEL AT THE AIRPORT ROTATING BEACON.
- PROVIDE #10 AWG COPPER BONDING JUMPER FROM PANEL ENCLOSURE FRAME TO ENCLOSURE DOOR.
- PROVIDE 2-POSITION MAINTAINED CONTACT "OFF-ON" SELECTOR SWITCH FOR PHOTOCELL BYPASS CONTROL & MOUNT ON RELAY PANEL ENCLOSURE DOOR. SELECTOR SWITCH SHALL BE SQUARE D CLASS 9001, TYPE KS11FBH13 OR APPROVED EQUAL. INCLUDE LEGEND PLATE LABELED "PHOTOCELL BYPASS".
- PROVIDE 2-POSITION MAINTAINED CONTACT "NORMAL-SPARE" SELECTOR SWITCH FOR CONSTANT CURRENT REGULATOR TRANSFER CONTROL & MOUNT ON RELAY PANEL ENCLOSURE DOOR. SELECTOR SWITCH SHALL BE SQUARE D CLASS 9001, TYPE KS11FBH13 OR APPROVED EQUAL. INCLUDE LEGEND PLATE LABELED "RWY 13-31 CCR TRANSFER" & A LEGEND PLATE TO INDICATE POSITION "NORMAL-SPARE".
- ALL FEEDER AND/OR BRANCH CIRCUIT CONDUCTORS OF THE SAME CIRCUIT (INCLUDING NEUTRAL CONDUCTORS AND EQUIPMENT GROUNDING CONDUCTORS) SHALL BE CONTAINED WITHIN THE SAME RACEWAY, AUXILIARY GUTTER, OR WIREWAY TO COMPLY WITH NEC 300.3(B). FOR VOLTAGE POWERED CIRCUITS TO AIRFIELD DEVICES ROUTE ALL PHASE, NEUTRAL, & EQUIPMENT GROUNDING CONDUCTORS FROM THE VAULT PANELBOARD TO THE RELAY/CONTACTOR PANEL AND THEN TO THE RESPECTIVE AIRFIELD DEVICE.



| DATE | REVISION | BY |
|------|----------|----|
| | | |
| | | |
| | | |

TRI-TOWNSHIP AIRPORT
 SAVANNA, CARROLL COUNTY
 ILLINOIS

IL PROJ.: SFY-3782 A.I.P. PROJ.: 3-17-0091-B14

| | | | |
|------------------------------|---------------------|------------|---------------|
| HL Project No. 07A0144D_0800 | File Name E-605.DWG | Scale NONE | Date 05/13/08 |
| LAYOUT | KNL | 01/02/08 | |
| DRAWN | MV | 01/03/08 | |
| REVIEWED | CAH | 02/08/08 | |

HANSON
 Hanson Professional Services Inc.
 1525 South Sixth Street
 Springfield, Illinois 62703-2886
 Chicago, Illinois

CONSTRUCT
 NEW VAULT
 RELAY/CONTACTOR
 PANEL DETAIL