

INDEX OF SHEETS

SHEET NO.	DESCRIPTION
1	COVER SHEET
2	GENERAL NOTES
3-4	SUMMARY OF QUANTITIES
5-6	SCHEDULE OF QUANTITIES
7-12	ROADWAY PLAN DETAILS
13	MAINTENANCE OF TRAFFIC
14-20	SIGN PANEL REPORTS
21-40	STRUCTURAL PLANS
41-45	BORING LOGS

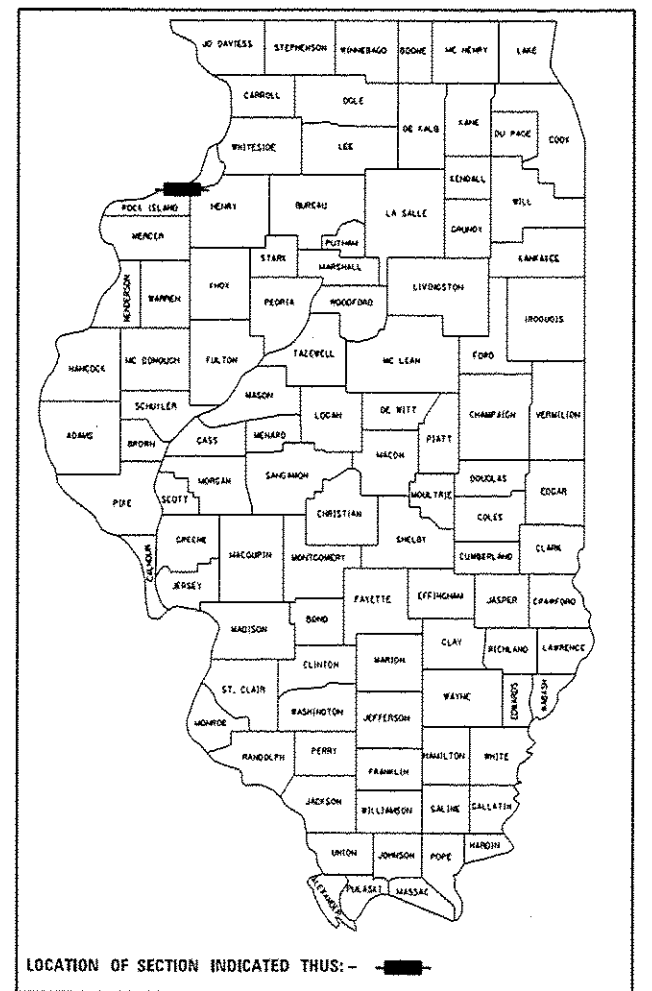
LIST OF STATE STANDARDS

SEE SHEET 2

STATE OF ILLINOIS
DEPARTMENT OF TRANSPORTATION
DIVISION OF HIGHWAYS

PROPOSED
HIGHWAY PLANS

FAI ROUTE VARIOUS
SECTION D-2 OVD SIN STR REPL 14-26
PROJECT SIGN STRUCTURE REPLACEMENT
ROCK ISLAND COUNTY



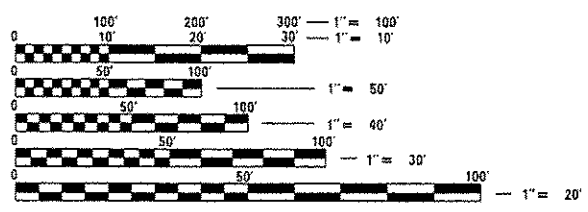
PREPARED BY:

HBM ENGINEERING GROUP, LLC.
CONSULTING & DESIGN
INSPECTION & RATING
RESEARCH & TESTING

4415 WEST HARRISON ST.
SUITE 231
HILLSIDE, IL 60162
PHONE: (708) 236-0900
FAX: (708) 236-0901

CG **Clorba Group, Inc.**
CONSULTING ENGINEERS

5507 North Cumberland Avenue, Suite 402
Chicago, Illinois 60630
Tel: 773.775.4000 Fax: 773.775.4014
Email: ent@cgil.com

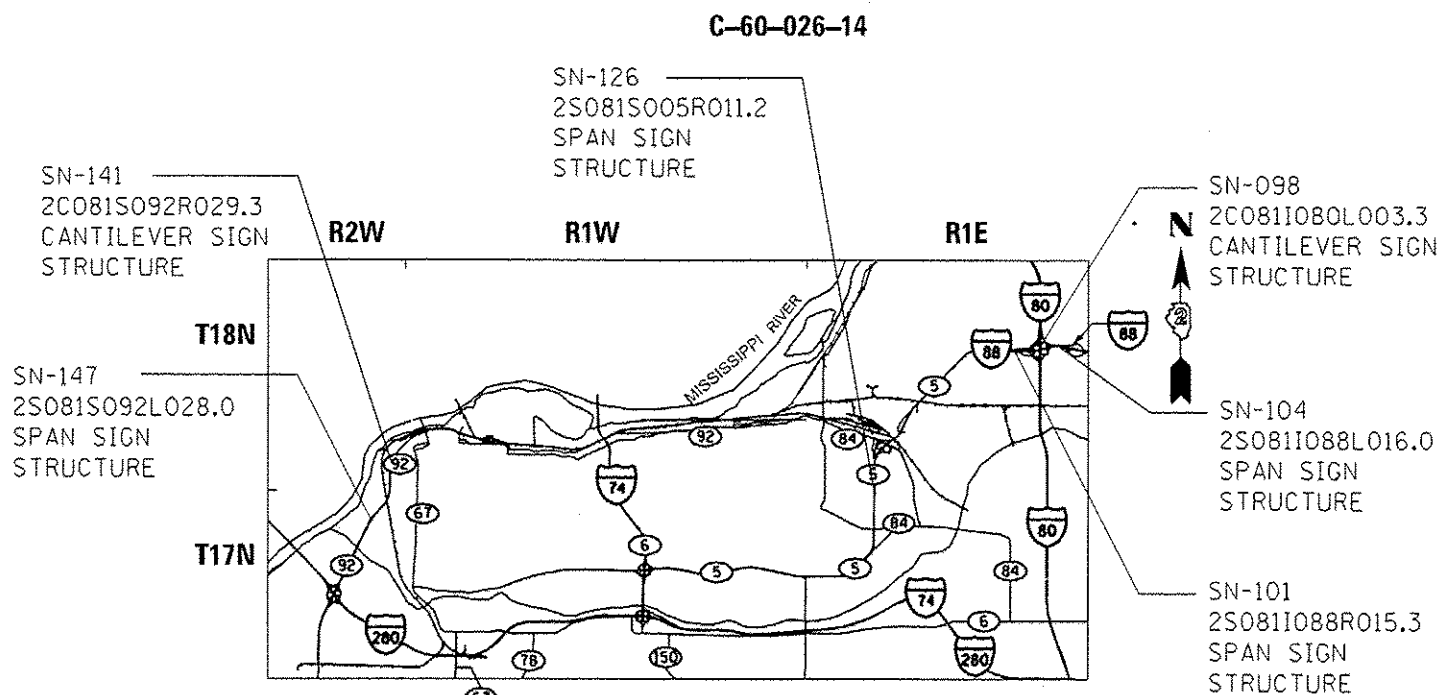


FULL SIZE PLANS HAVE BEEN PREPARED USING STANDARD ENGINEERING SCALES. REDUCED SIZED PLANS WILL NOT CONFORM TO STANDARD SCALES. IN MAKING MEASUREMENTS ON REDUCED PLANS, THE ABOVE SCALES MAY BE USED.

J.U.L.I.E.
JOINT UTILITY LOCATION INFORMATION FOR EXCAVATION
1-800-892-0123
OR 811

PROJECT MANAGER: MAHMOUD ETEMADI, P.E. (815) 284-5393
DESIGN PROJECT MANAGER: MOUSSA ISSA (708) 236-0900

CONTRACT NO. 46287



AREA LOCATION PLAN

TRAFFIC DATA:

SN-098 2C081I080L003.3 I-80 EXIT RAMP M.P. 3.3 ADT 900 (2011)	SN-126 2S081S005R011.2 IL-5 M.P. 11.2 ADT 14700 (2011)
SN-101 2S081I088R015.3 I-88 M.P. 15.3 ADT 14500 (2011)	SN-141 2C081S092R029.3 I-88 M.P. 29.3 ADT 11000 (2011)
SN-104 2S081I088L016.0 I-88 EXIT RAMP M.P. 16.0 ADT 4600 (2011)	SN-147 2S081S092L028.0 I-92 M.P. 3.3 ADT 12300 (2011)



Signed Moussa A. Issa
Moussa A. Issa, HBM II, Lic. No. 081-005738
Expires 11-30-2014
Date 03/18/2014 For Sheets 01 Thru 06 and 21 Thru 45
(Total of 45 Sheets)



Signed Joseph P. Attanaseo
JOSEPH P. ATTANASEO, CIORBA IL.
Lic. No. 062-060315 Expires 11-31-2015
Date 03/18/2014 For Sheets 07 Thru 20
(Total of 14 Sheets)

STATE OF ILLINOIS
DEPARTMENT OF TRANSPORTATION
DIVISION OF HIGHWAYS

SUBMITTED March 25 2014
Mauro Mann
DEPUTY DIRECTOR OF HIGHWAYS, REGION, ENGINEER
Acting Engineer of Operations
May 9 2014
John P. Baranzelli, P.E.
ENGINEER OF DESIGN AND ENVIRONMENT
May 9 2014
Chris Osman, P.E.
DIRECTOR OF HIGHWAYS, CHIEF ENGINEER

PRINTED BY THE AUTHORITY
OF THE STATE OF ILLINOIS