

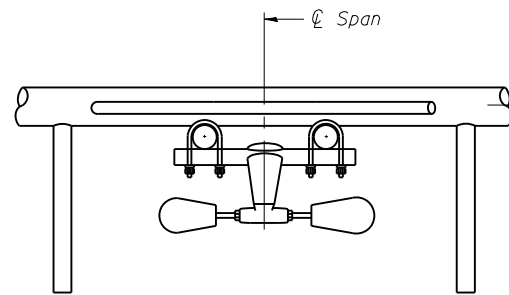
PLAN DETAIL "A"
 ☉ Span between Panel Points

PLAN DETAIL "B"
 ☉ Span at Panel Point

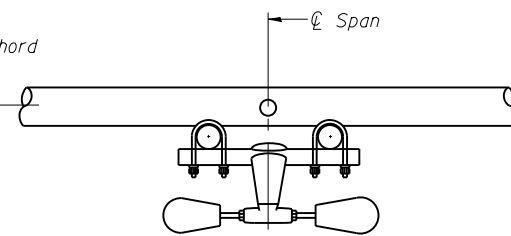
PLAN DETAIL "C"
 ☉ Span at ☉ Chord Splice

* Center of horizontal to center of splice dimension may vary. Verify before drilling holes in mounting tube.

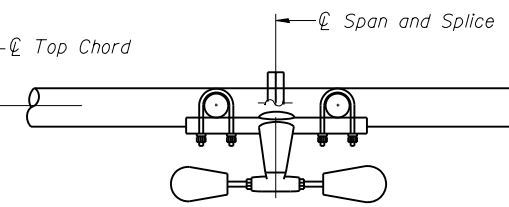
- NOTES**
- Damper: One damper per truss. (31 lbs. minimum Stockbridge-Type Aluminum - 29" minimum between ends of weights) Cost included in Overhead Sign Structure...
 - Materials: Materials: Aluminum tubes shall be ASTM B221 alloy 6061 temper T6. Cost included in Overhead Sign Structure...



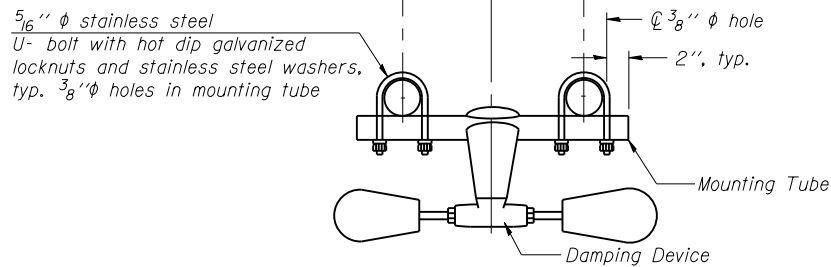
SECTION A-A



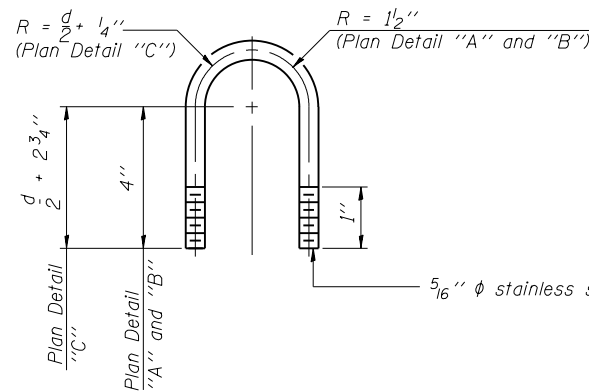
SECTION B-B



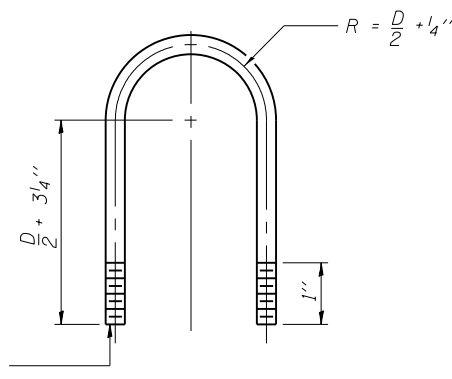
SECTION C-C



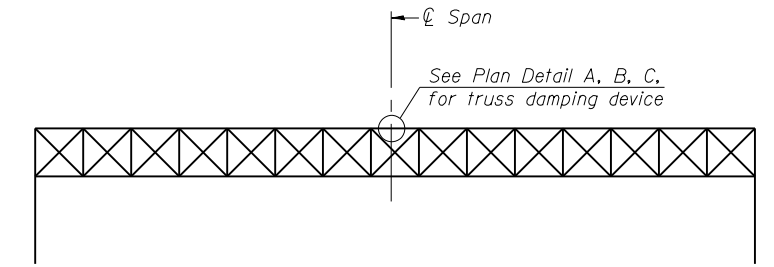
TRUSS DAMPING DEVICE CONNECTION DETAIL
 (Typical)



DAMPING DEVICE MOUNTING TUBE U-BOLT DETAIL
 (Typical)



TOP CHORD TO CROSS TUBE U-BOLT DETAIL
 (Typical - Detail "A" and "B")



ELEVATION
 Aluminum Overhead Sign Truss

OS-A-D

6-1-12

HBM
 ENGINEERING GROUP, LLC
 4415 WEST HARRISON ST.
 SUITE 231
 HILLSIDE, IL 60162
 PHONE: (708) 236-0900
 FAX: (708) 236-0901

| | | |
|-----------------------|----------------|-----------|
| USER NAME = | DESIGNED - JMG | REVISED - |
| PLOT SCALE = | CHECKED - JJS | REVISED - |
| PLOT DATE = 3/12/2014 | DRAWN - AI | REVISED - |
| | CHECKED - MAI | REVISED - |

| | |
|----------------|-----------|
| DESIGNED - JMG | REVISED - |
| CHECKED - JJS | REVISED - |
| DRAWN - AI | REVISED - |
| CHECKED - MAI | REVISED - |

STATE OF ILLINOIS
 DEPARTMENT OF TRANSPORTATION

OVERHEAD SIGN STRUCTURE
 DAMPING DEVICE

Sheet No. 4 of 11

| | | | | |
|------------------------------|---------|--------------------|--------------|-----------|
| F.A. RTE. | SECTION | COUNTY | TOTAL SHEETS | SHEET NO. |
| VAR. | | ROCK ISLAND | 45 | 33 |
| • D-2 OVD SIN STR REPL 14-26 | | CONTRACT NO. 46287 | | |
| ILLINOIS FED. AID PROJECT | | | | |