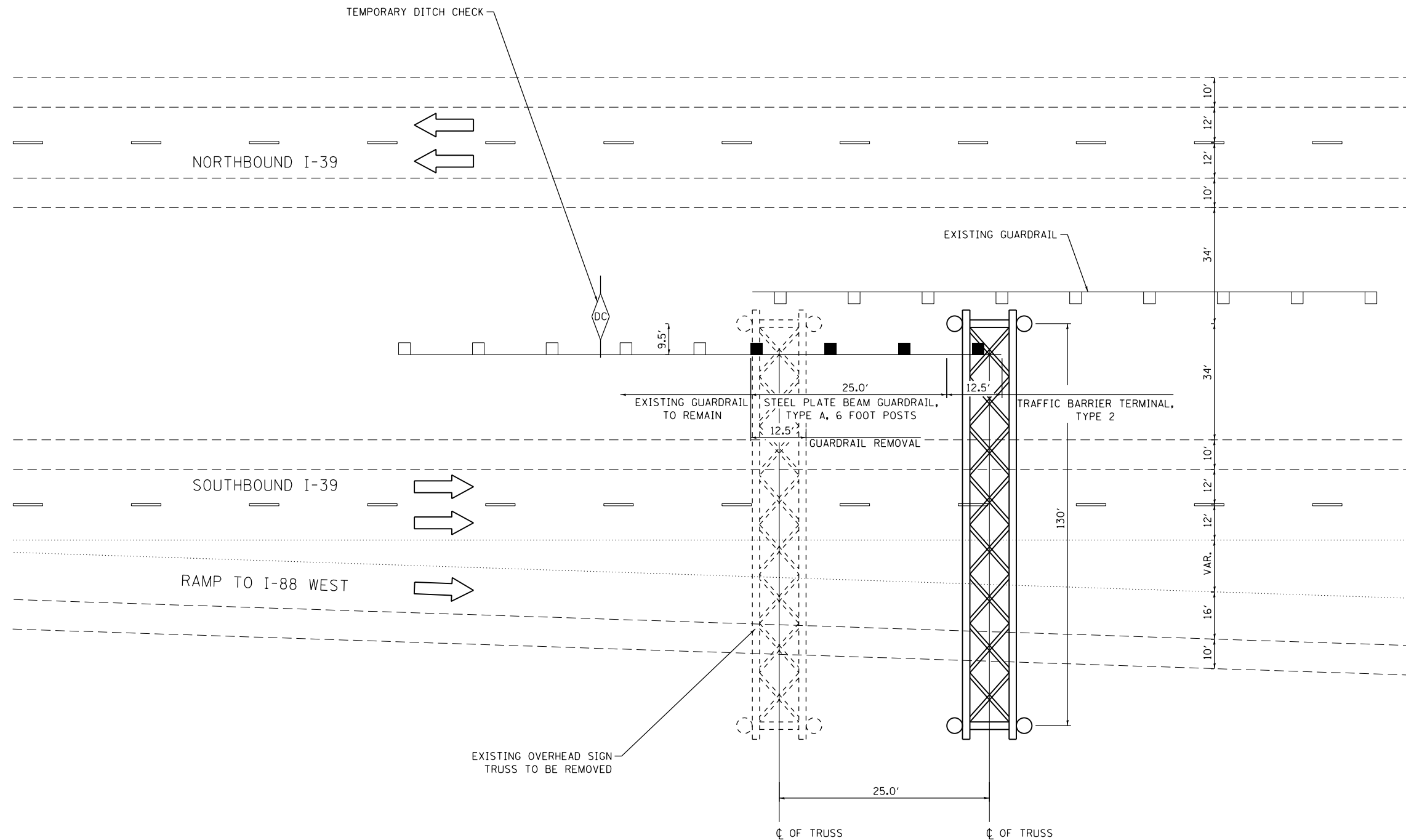
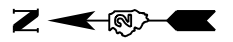


NOTES:

- 1) REMOVE EXISTING TYPE 2 TERMINAL SECTION FOR SOUTHBOUND INSIDE GUARDRAIL RUN
- 2) INSTALL 25 FT OF GUARDRAIL ATTACHING TO EXISTING GUARDRAIL FOR SOUTHBOUND INSIDE GUARDRAIL RUN
- 3) INSTALL TYPE 2 TERMINAL SECTION TO PROPOSED SOUTHBOUND INSIDE GUARDRAIL
- 4) EXISTING NORTHBOUND INSIDE GUARDRAIL TO REMAIN
- 5) INSTALL TEMPORARY DITCH CHECK AS DIRECTED BY THE ENGINEER



SN-039
2S071I039L118.7



N:\PRD\1\0220080\00\0220080\01\Design\Details\0220080_00-detailed.dwg - RdwyPlan.dgn

<p>Clorba Group, Inc. CONSULTING ENGINEERS 8007 North Cumberland Avenue, Suite 402 Chicago, Illinois 60636 Tel: 773.775.4009 Fax: 773.775.4014 Email: info@clorba.com</p>	USER NAME = jattanesco	DESIGNED - JPA	REVISED -	STATE OF ILLINOIS DEPARTMENT OF TRANSPORTATION	SIGN STRUCTURE REPLACEMENT ROADWAY PLAN DETAIL - SN-039			F.A.I. RTE.	SECTION	COUNTY	TOTAL SHEETS	SHEET NO.
	PLOT SCALE = 40.0000' / 1" =	DRAWN - JPA	REVISED -		VAR.	.	**	45	12			
	PLOT DATE = 1/31/2014	CHECKED - MJL	REVISED -		D-2 OVD SIN STR REPL 14-27		CONTRACT NO. 46288		ILLINOIS FED. AID PROJECT			
				SCALE: N.T.S.		SHEET NO. 6 OF 6 SHEETS		STA. TO STA.				