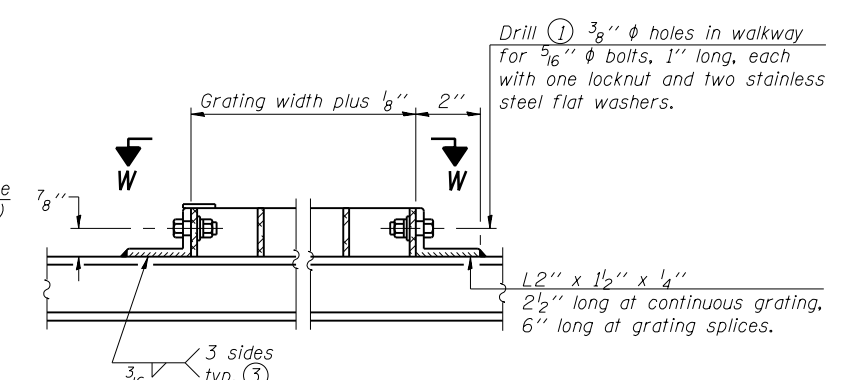
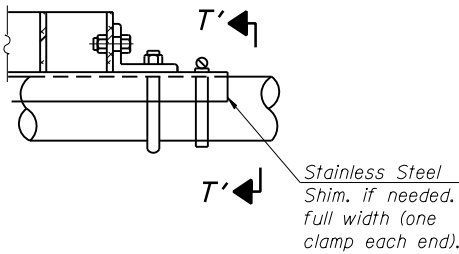


(CONTINUOUS WALKWAY GRATING)

(AT WALKWAY GRATING SPLICE)

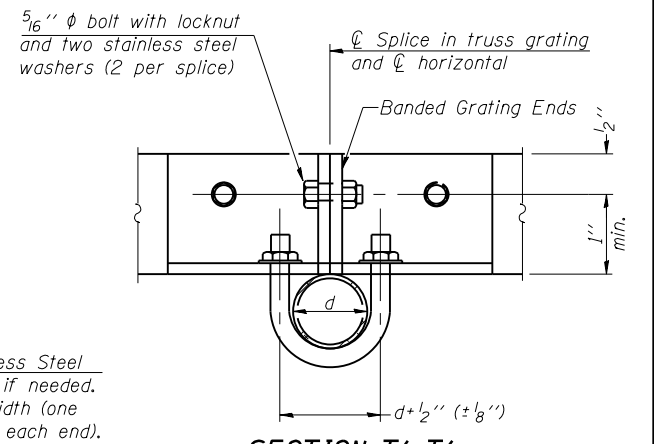


DETAIL W
(Walkway grating)

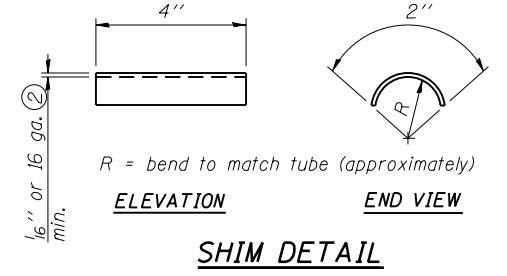


DETAIL T'

(Truss grating splice)
Details not shown same as Detail T.
Alternate materials may be used subject to the Engineer's review and approval.



SECTION T'-T'

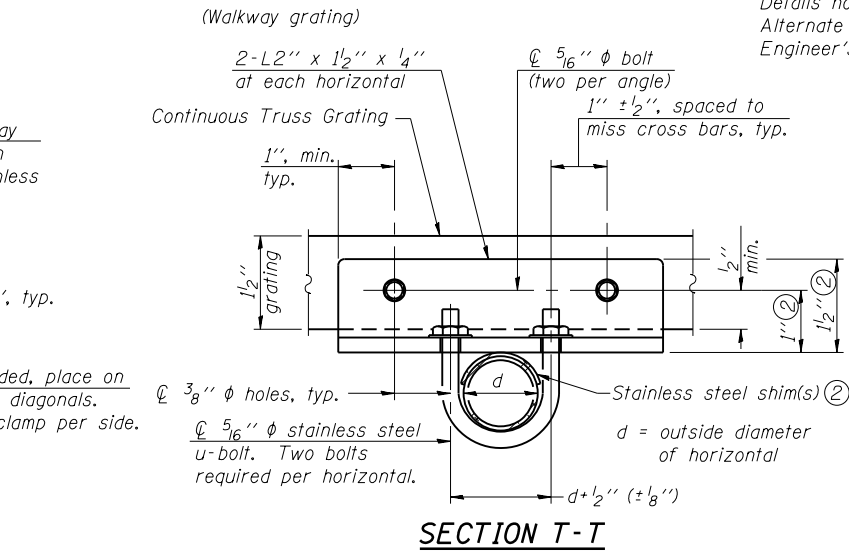


SHIM DETAIL

SPECIFICATIONS FOR STANDARD ALUMINUM GRATING
Main Bearing Bars (MBB) shall be 3/16" x 1 1/2" on 1 3/16" centers and conform to ASTM B211 Alloy 6061-T6.
Cross bars (CB) shall be 3/16" x 1 1/2" on 4" centers and conform to ASTM B221 Alloy 6063-T5 or 6061-T6.

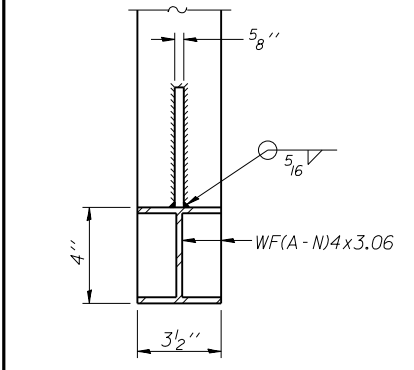
OR
Aluminum Grating with modified "T" sections for main bearing bars shall meet the following requirements:
Main bars shall conform to ASTM B221 Alloy 6061-T6 and have a minimum section modulus equal to 0.0705 in.³ per bar, a depth of 1 1/2", spaced on 1 3/16" centers.
Cross bars shall conform to ASTM B221 Alloy 6063-T5 or T-42 and spaced on 4" centers.

- Drilling holes in grating may be done in shop or field, based on Contractor's preference and subject to accurate alignment.
- Stainless steel shims shall be placed as shown in Detail T if needed to compensate for alignment variations between horizontal and diagonal pipes beyond adjustment provided by angles. Thicker shims may be used subject to shims performing properly.
- If Handrail Joint present, weld angle to WF(A-N)4 and 1/4" extension bars. (See Base Sheet OSC-A-8.)
- 1/8" x 1/2" x 2" welded to handrail posts to protect locations that contact grating.
- Tube to grating gap may vary from 0 to 1/2", max. to align walkway, allow for camber, etc.
- Based on actual sign height, D_s, given on OSC-A-1.



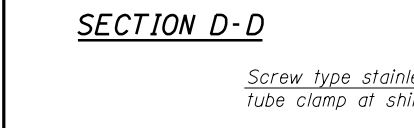
SECTION T-T

Structure Number	Station	A	⑥ B	C	⑥ D
SN-021	2C1010020L024.8	8 1/2"	3' - 0"	7' - 0"	10' - 6"

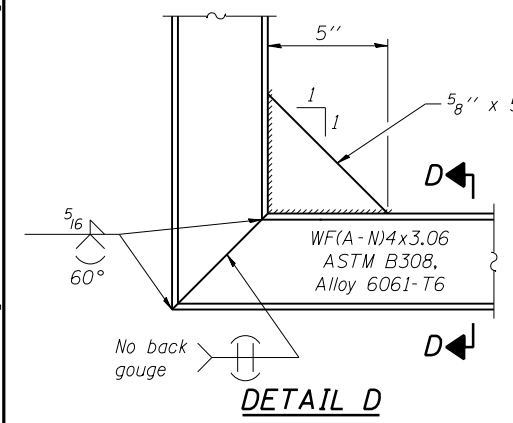


SECTION B-B

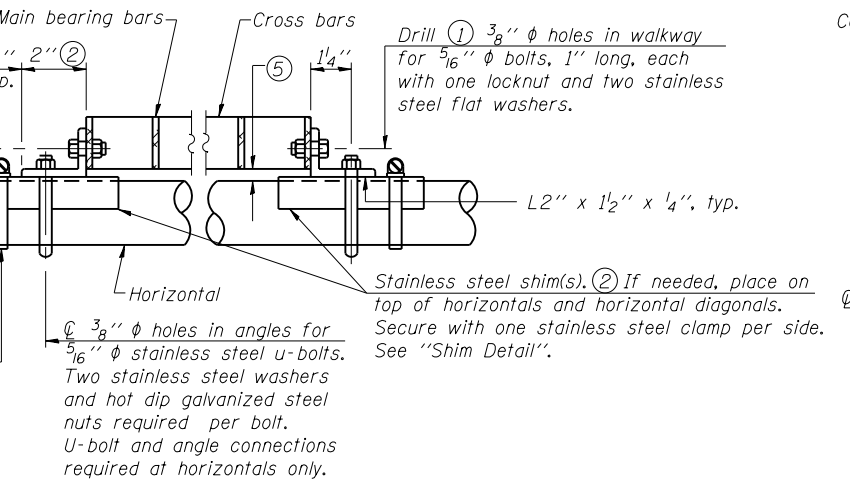
Sign shall be even with the top of the bracket, but it may extend no more than 6" above the top of the bracket for field adjustments.



SECTION D-D



DETAIL D



DETAIL T
(Continuous Truss grating)

OSC-A-7

6-1-12



USER NAME = jettanaseo	DESIGNED - NG	REVISED -
PLOT SCALE = 0:2.0000 "/> <td>CHECKED - BWS</td> <td>REVISED -</td>	CHECKED - BWS	REVISED -
PLOT DATE = 1/31/2014	DRAWN - RD	REVISED -
	CHECKED - BWS	REVISED -

STATE OF ILLINOIS
DEPARTMENT OF TRANSPORTATION

CANTILEVER SIGN STRUCTURES - WALKWAY DETAILS
ALUMINUM TRUSS & STEEL POST

SHEET NO. S-7 OF S-26 SHEETS

F.A.I. R.T.E.	SECTION	COUNTY	TOTAL SHEETS	SHEET NO.
VAR.	.	..	45	26
• D-2 OVD SIN STR REPL 14-27			CONTRACT NO. 46288	
ILLINOIS FED. AID PROJECT				

WINNEBAGO & OGLE