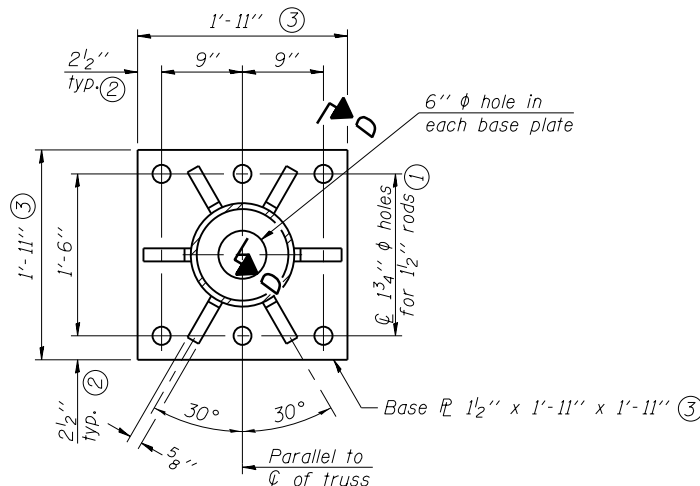
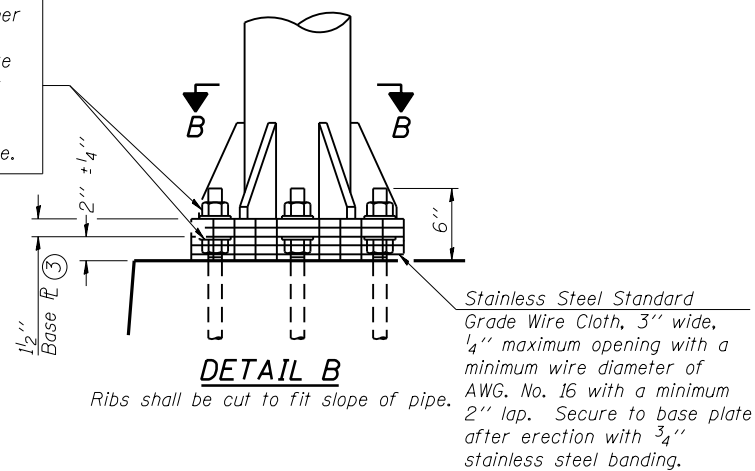
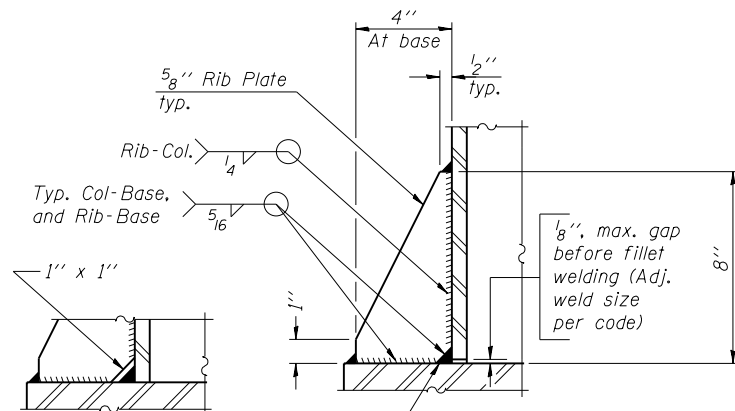


Hexagon locknut and washer (top), leveling nut and washer (bottom). Galvanize per AASHTO M232. Nuts shall each be tightened against base plate with 200 lb.-ft. minimum torque.



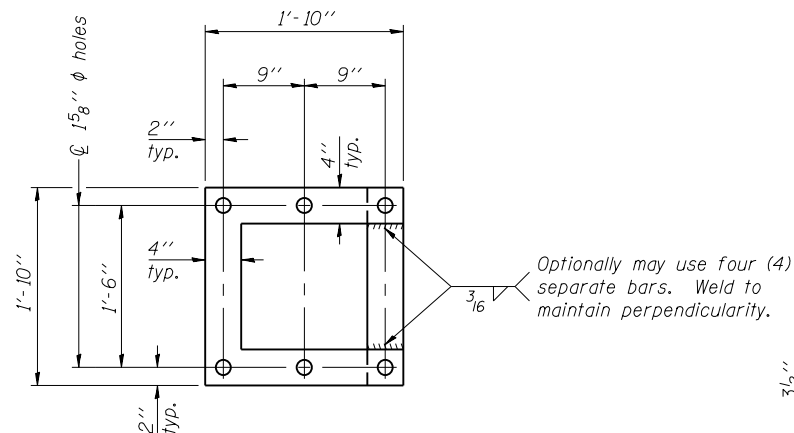
SECTION B-B



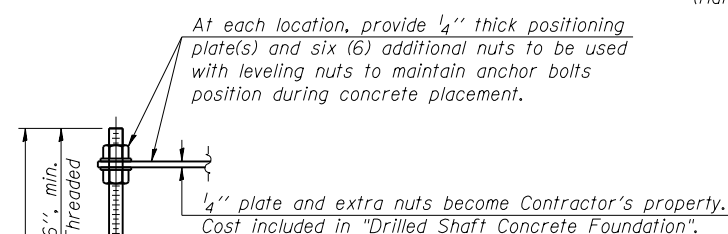
SECTION D-D

** Alternate detail if welding col. to base plate first, then snip inside corner of ribs. Terminate weld on rib 1/4 inch from snip.

No snip req'd. at rib inside corner if placed before col. to base plate welding.**



POSITIONING PLATE(S)



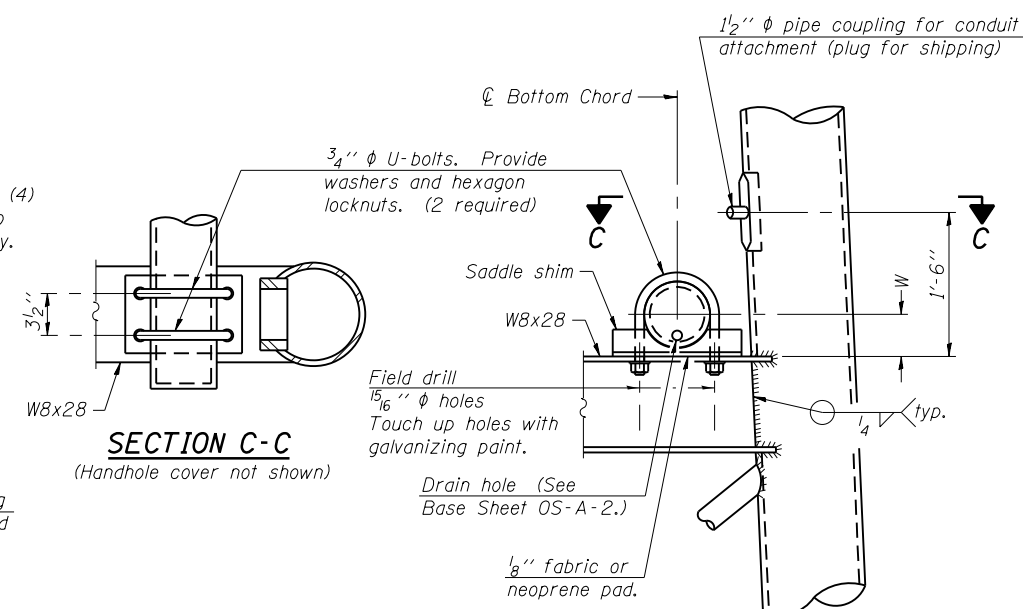
ANCHOR ROD DETAIL

Anchor rods shall conform to ASTM F1554 Grade 105 Galvanize upper 12 inch minimum per AASHTO M232. No welding shall be permitted on rods.

TYPE III-A TRUSS
12" PH PIPE SUPPORT FRAME DETAILS

Notes:
For Type III-A Truss spans greater than 150 ft, and up to 160 ft.:

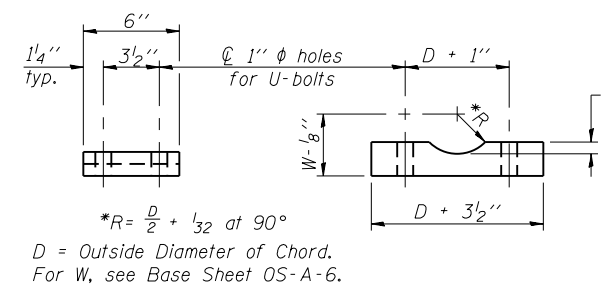
- ① 1 3/4 inch diameter rod, 2 inch diameter holes
- ② 2 3/4 inch edge distance
- ③ Base plate 1 5/8 inch x 1 1/2 inch x 1 1/2 inch



SECTION C-C

(Handhole cover not shown)

DETAIL C



SADDLE SHIM DETAIL

ASTM B26 Alloy 356-F
or
ASTM B209 Alloy 6061-T651
(4 required per sign truss)

Truss Chord Nominal Dia.	a
7"	1"
8 1/2"	1 1/4"
9"	1 3/8"

N:\PROJ\0020050\00\0020050\01\Design\Structural\CAD\SN-03-CN_-S017.dgn

OS4-A-8aA

6-1-12



USER NAME = jettanaseo	DESIGNED - NG	REVISED -
PLOT SCALE = 0:2.0000 1' = 1/4" in.	CHECKED - BWS	REVISED -
PLOT DATE = 1/31/2014	DRAWN - RD	REVISED -
	CHECKED - BWS	REVISED -

STATE OF ILLINOIS
DEPARTMENT OF TRANSPORTATION

OVERHEAD SIGN STRUCTURES
SUPPORT FRAME FOR TYPE III-A ALUMINUM TRUSS

SHEET NO. S-17 OF S-26 SHEETS

F.A.I. RTE.	SECTION	COUNTY	TOTAL SHEETS	SHEET NO.
VAR.	.	**	45	36
D-2 OVD SIN STR REPL 14-27			CONTRACT NO. 46288	
ILLINOIS FED. AID PROJECT				

WINNEBAGO & OGLE