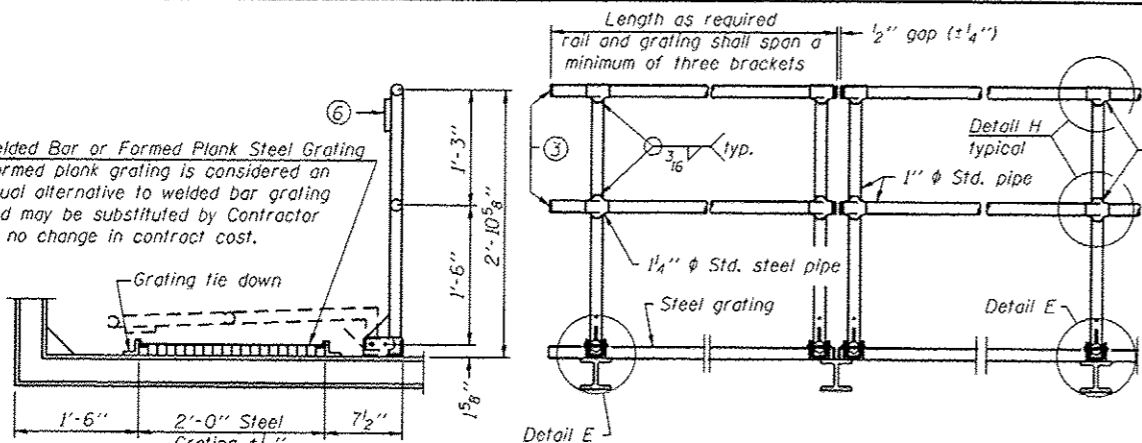
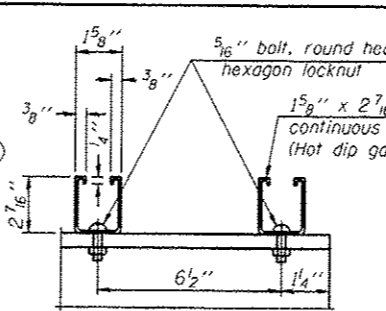


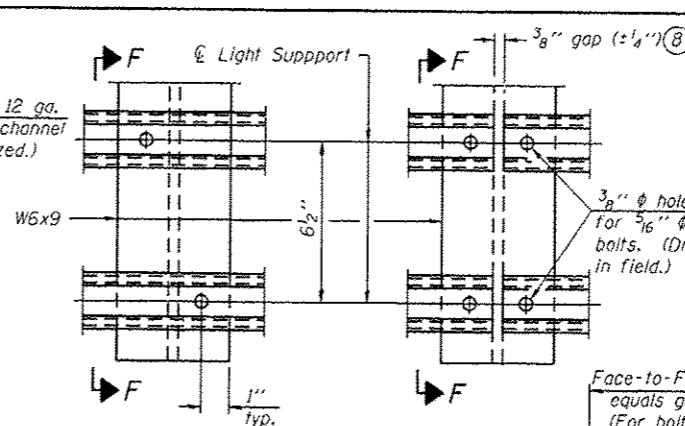
Welded Bar or Formed Plank Steel Grating
Formed plank grating is considered an equal alternative to welded bar grating and may be substituted by Contractor at no change in contract cost.



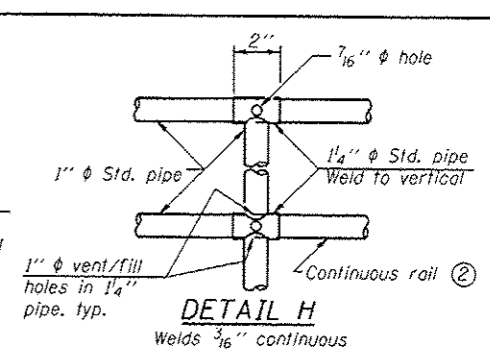
SIDE ELEVATION DETAIL D HANDRAIL FRONT ELEVATION



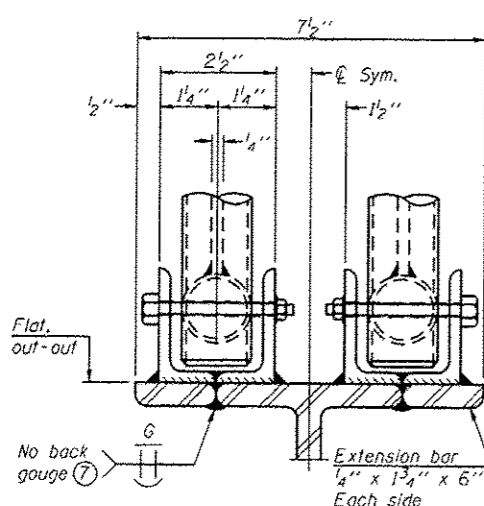
SECTION F-F LIGHTING FIXTURE MOUNTS
(If required)



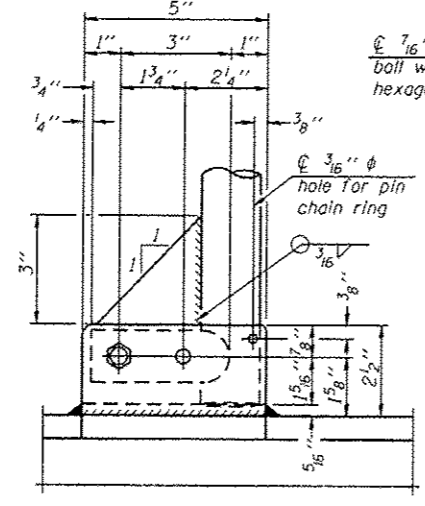
DETAIL F DETAIL G



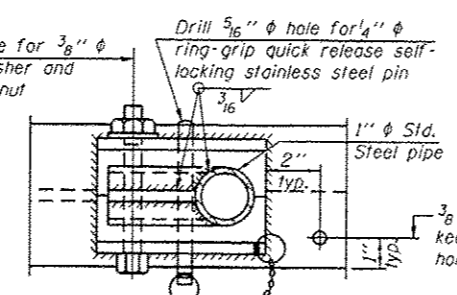
DETAIL H
Welds 3/16" continuous



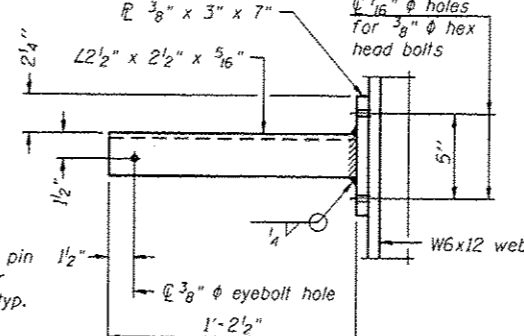
ELEVATION AT HANDRAIL JOINT
(Details not shown same as "FRONT ELEVATION")



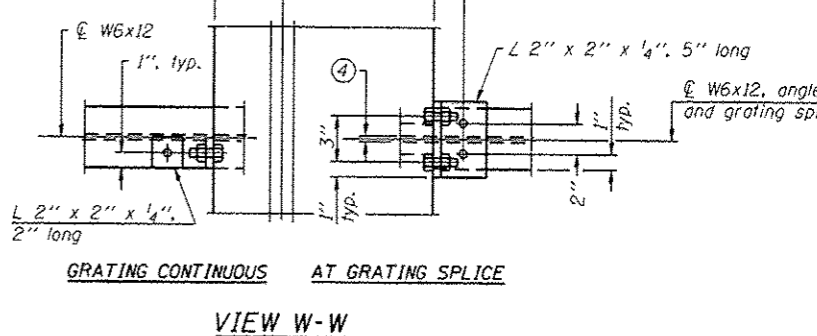
SIDE ELEVATION



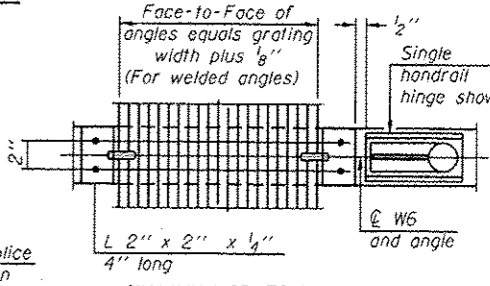
PLAN AT SINGLE HANDRAIL HINGE
DETAIL E



SECTION P-P



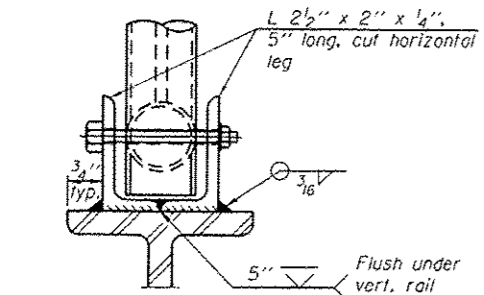
VIEW W-W
GRATING CONTINUOUS AT GRATING SPLICE



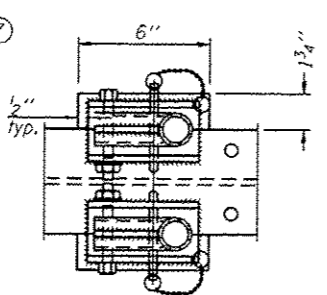
PLAN

NOTES

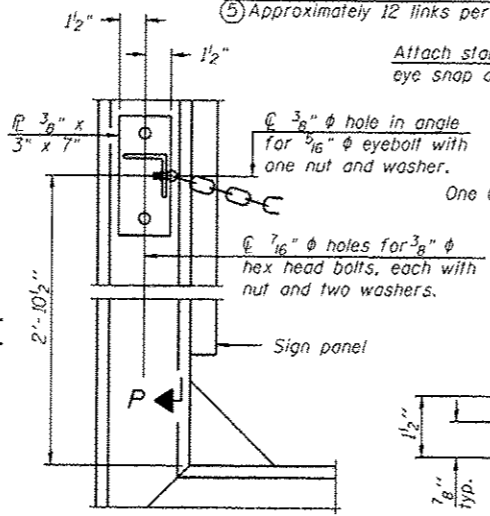
- Drilling holes in grating may be done in shop or field, based on Contractor's preference and subject to accurate alignment. Field drilled holes must be touched up with galvanized paint.
- Horizontal rail member shall be continuous thru 1 1/4" pipe. Provide 7/16" hole in 1 1/4" pipe for 3/8" bolt. Field drill 7/16" hole in horizontal rail member. Provide washer and locknut for bolt. (Use 5/16" eyebolts in 1/2" holes on top rail at ends only.)
- Install standard force-fit end caps or weld 1/2" end plates with 1/2" c.f.w. and grind smooth. (All rail ends.)
- 3/8" (±1/4") gap between grating panels at splice.
- Chain to be type 304L stainless steel suitable for prolonged exterior exposure. Approximately 3'-6" long chain per location. Maximum sag with handrail erected = 4".
- 1/2" x 1/2" x 2" welded to handrail posts to protect locations that contact grating.
- Extrusions may be used in lieu of details shown, with approval by Engineer.
- Field cut ends of light support channels shall be free of burrs or hazardous projections and coated with zinc-rich primer or equivalent.



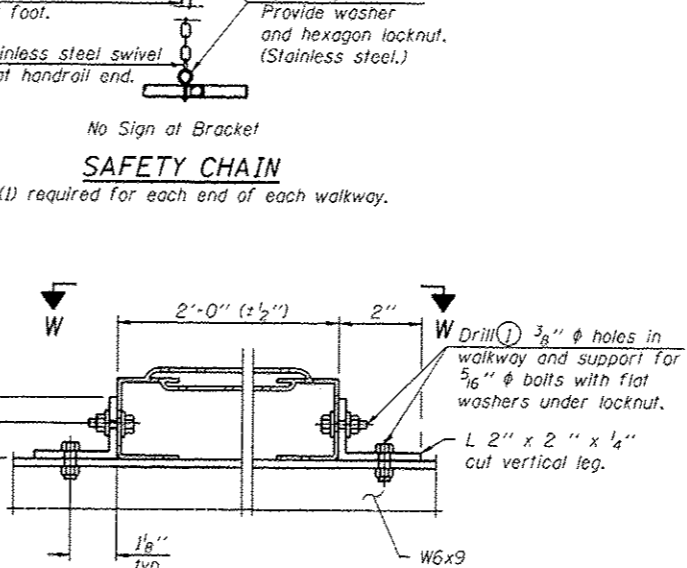
FRONT ELEVATION
(See above Elevations for dimensions.)



PLAN AT HANDRAIL JOINT
(For Details, see Elevations.)



SAFETY CHAIN ATTACHMENT
(With Sign Present)



ALTERNATE FORMED PLANK GRATING DETAILS

Plank Grating: nominal depth = 2 1/2" (±1/2"); perforated or expanded steel sheet with a non-skid surface (non-serrated) concentrated load capacity = 500 lbs. with 6'-0" clear span.

BM-4

1-20-11

WELDED BAR GRATING DETAILS

FILE NAME	USER NAME	DESIGNED	REVISED
		CHECKED	REVISED
PLOT SCALE		DRAWN	REVISED
PLOT DATE		CHECKED	REVISED

STATE OF ILLINOIS
DEPARTMENT OF TRANSPORTATION

BRIDGE MOUNT SIGN STRUCTURES
WALKWAY DETAILS

F.A. RITE	SECTION	COUNTY	TOTAL SHEETS	SHEET NO.
VAR	04-4 DVD STR REPL 14-47	VARIOUS	65	16
CONTRACT NO. 46314			ILLINOIS FED. AID PROJECT	

SHEET NO. OF SHEETS