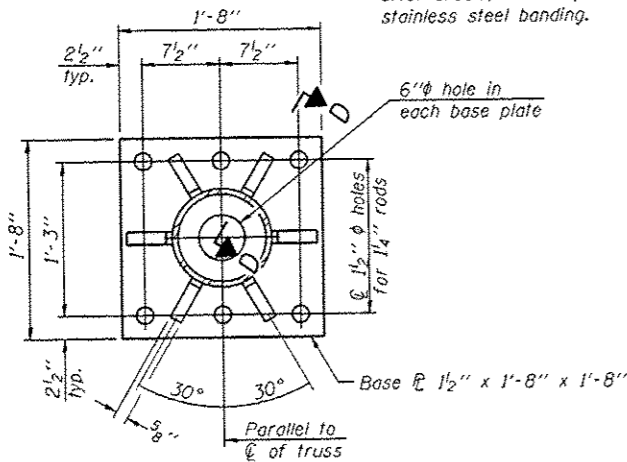
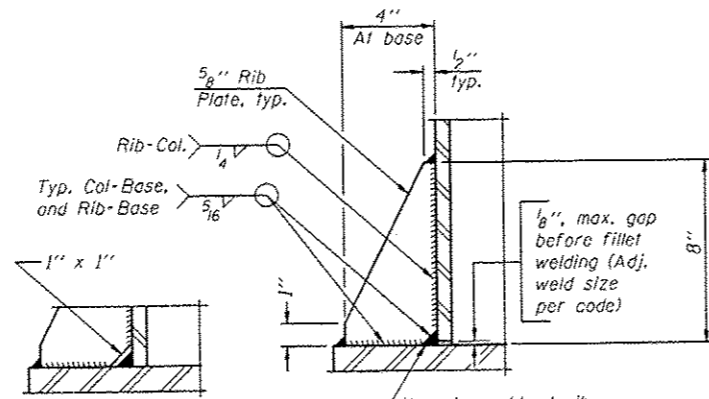


**DETAIL B**

Ribs shall be cut to fit slope of pipe.  
Stainless Steel Standard Grade Wire Cloth, 3" wide, 1/4" maximum opening with a minimum wire diameter of AWG, No. 16 with a minimum 2" lap. Secure to base plate after erection with 3/4" stainless steel banding.

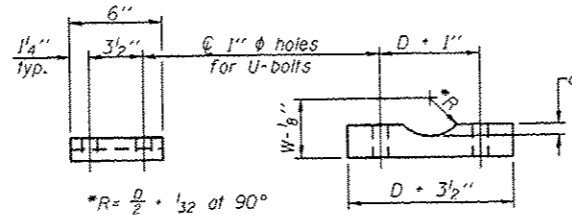


**SECTION B-B**



**SECTION D-D**

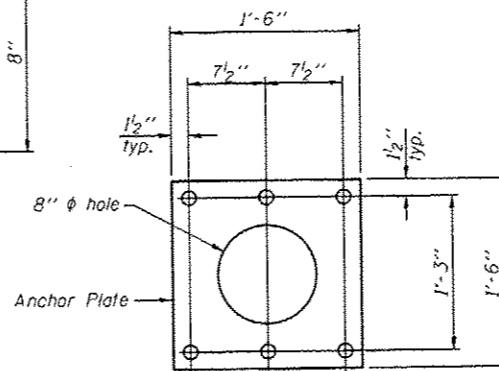
\*\* Alternate detail if welding col. to base plate first, then snip inside corner of ribs. Terminate weld on rib 1/4" from snip.



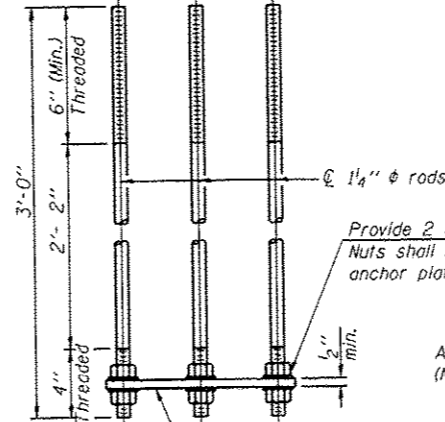
**SADDLE SHIM DETAIL**

ASTM B26 Alloy 355-F  
or  
ASTM B209 Alloy 6061-T651  
(4 required per sign truss)

Truss Chord Nominal Dia.	a
5"	3/4"
5 1/2"	13/16"
6"	7/8"
6 1/2"	15/16"
7"	1"

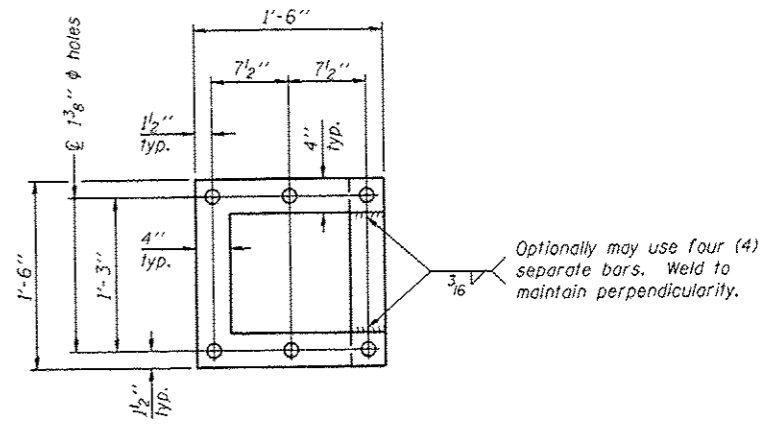


**ANCHOR ROD DETAIL**  
Spread Footing Foundation



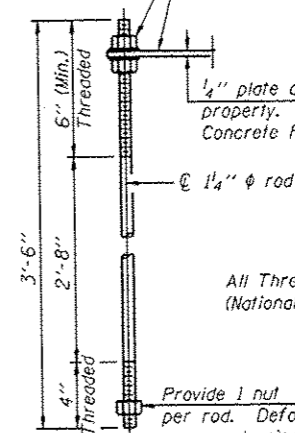
All Thread = NC (National Coarse)

Provide 2 uncoated nuts per rod. Nuts shall be "snug tight" against anchor plate.



**POSITIONING PLATE(S)**

At each location, provide 1/4" thick positioning plate(s) and six (6) additional nuts to be used with leveling nuts to maintain anchor bolts position during concrete placement.

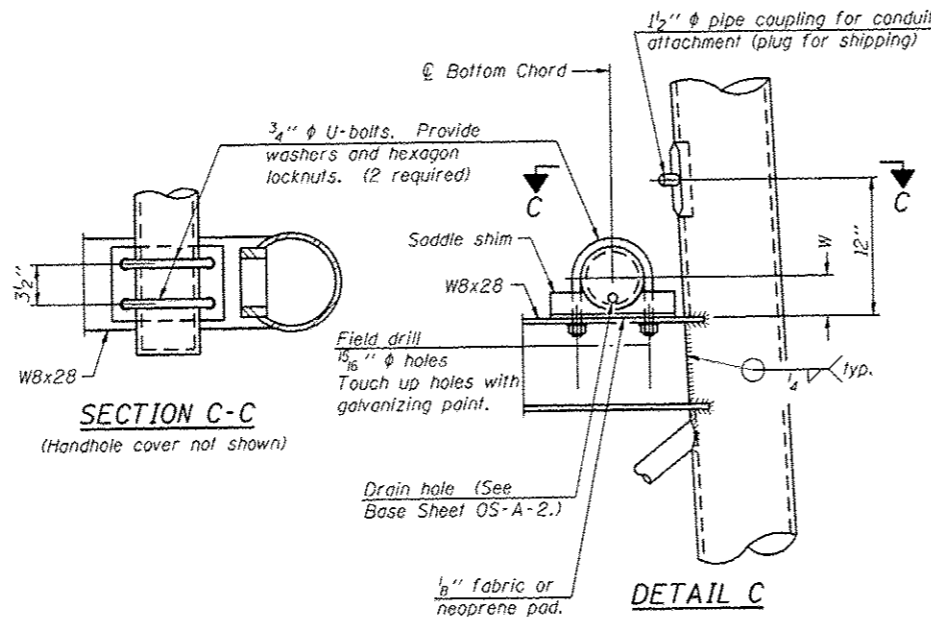


**ANCHOR ROD DETAIL**  
Drilled Shaft Foundation

1/4" plate and extra nuts become Contractor's property. Cost included in Drilled Shaft Concrete Foundations.

All Thread = NC (National Coarse)

Provide 1 nut per rod. Deform thread or use chemical thread lock to secure.



**SECTION C-C**

(Handhole cover not shown)

**DETAIL C**

**10" PIPE SUPPORT FRAME DETAILS**

Anchor rods shall conform to ASTM F1554 Grade 105. Galvanize upper 12" minimum per AASHTO M232. No welding shall be permitted on rods.

OS-A-6A

6-1-12

FILE NAME	USER NAME	DESIGNED	REVISIONS
		---	---
		---	---
		---	---
		---	---

STATE OF ILLINOIS  
DEPARTMENT OF TRANSPORTATION

OVERHEAD SIGN STRUCTURES  
SUPPORT FRAME DETAILS - ALUMINUM TRUSS

SHEET NO. \_\_\_ OF \_\_\_ SHEETS

F.A. RITE	SECTION	COUNTY	TOTAL SHEETS	SHEET NO.
VAR	D4-4 QVD SIGN STR REPL 14-47	VARIOUS	65	39
CONTRACT NO. 46314				
ILLINOIS FED. AID PROJECT				