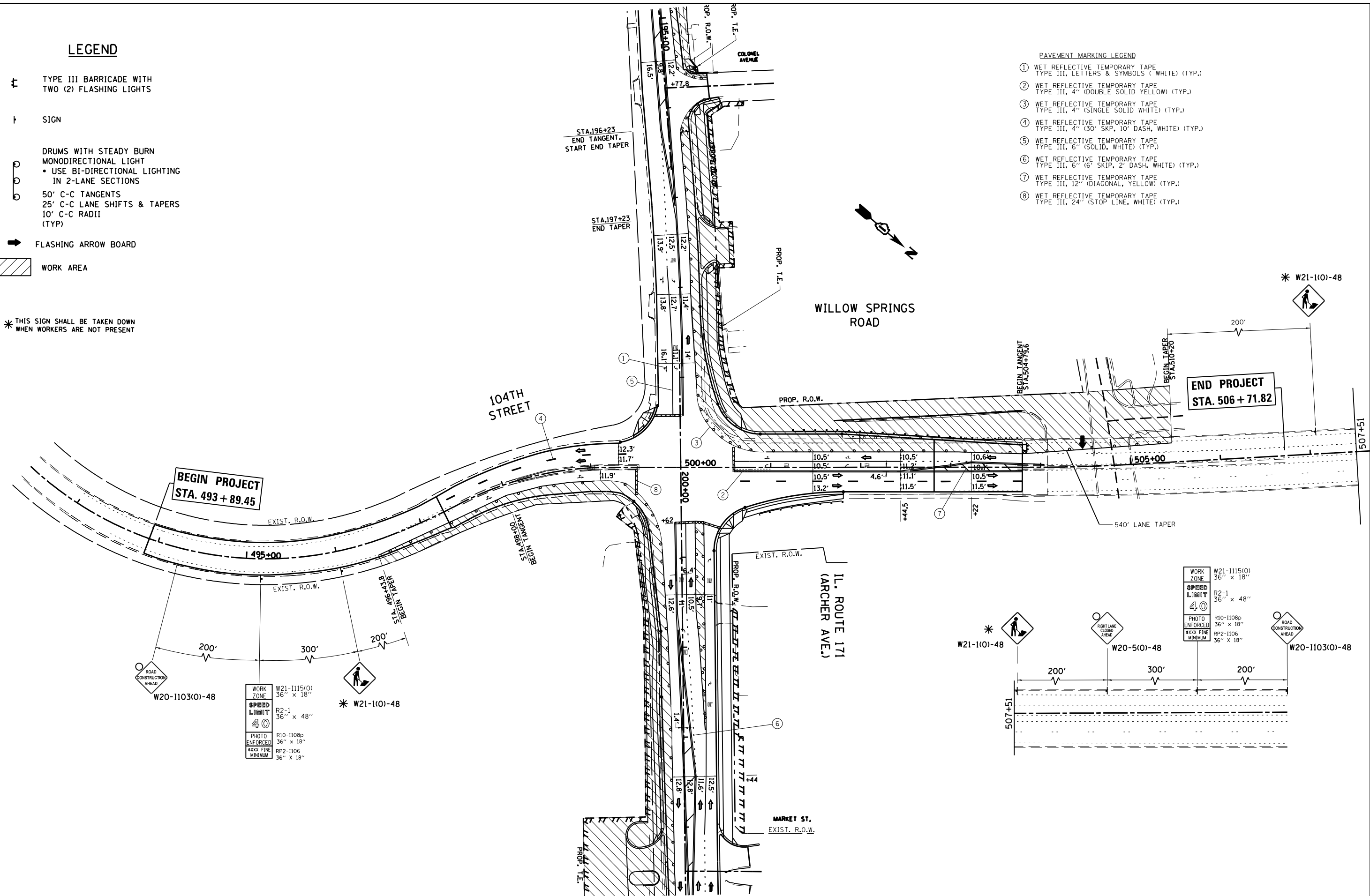


**LEGEND**

- ⊥ TYPE III BARRICADE WITH TWO (2) FLASHING LIGHTS
- ⊥ SIGN
- DRUMS WITH STEADY BURN MONODIRECTIONAL LIGHT
  - USE BI-DIRECTIONAL LIGHTING IN 2-LANE SECTIONS
- 50' C-C TANGENTS
- 25' C-C LANE SHIFTS & TAPERS
- 10' C-C RADII (TYP)
- FLASHING ARROW BOARD
- ▨ WORK AREA

\* THIS SIGN SHALL BE TAKEN DOWN WHEN WORKERS ARE NOT PRESENT

- PAVEMENT MARKING LEGEND**
- ① WET REFLECTIVE TEMPORARY TAPE TYPE III, LETTERS & SYMBOLS (WHITE) (TYP.)
  - ② WET REFLECTIVE TEMPORARY TAPE TYPE III, 4" (DOUBLE SOLID YELLOW) (TYP.)
  - ③ WET REFLECTIVE TEMPORARY TAPE TYPE III, 4" (SINGLE SOLID WHITE) (TYP.)
  - ④ WET REFLECTIVE TEMPORARY TAPE TYPE III, 4" (30' SKP, 10' DASH, WHITE) (TYP.)
  - ⑤ WET REFLECTIVE TEMPORARY TAPE TYPE III, 6" (SOLID, WHITE) (TYP.)
  - ⑥ WET REFLECTIVE TEMPORARY TAPE TYPE III, 6" (6' SKP, 2' DASH, WHITE) (TYP.)
  - ⑦ WET REFLECTIVE TEMPORARY TAPE TYPE III, 12" (DIAGONAL, YELLOW) (TYP.)
  - ⑧ WET REFLECTIVE TEMPORARY TAPE TYPE III, 24" (STOP LINE, WHITE) (TYP.)

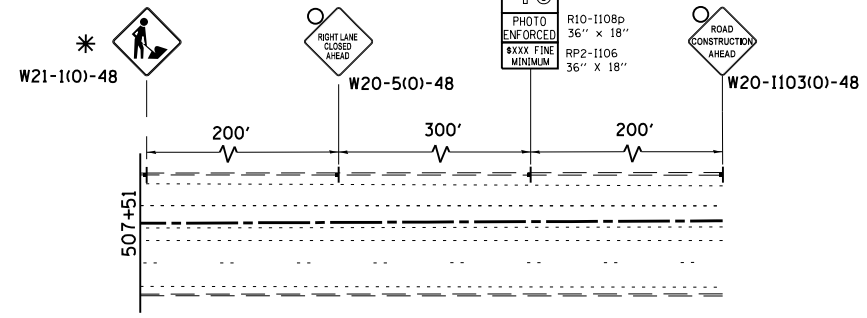


**BEGIN PROJECT**  
STA. 493 + 89.45

**END PROJECT**  
STA. 506 + 71.82

WORK ZONE	W21-1115(0)	36" x 18"
SPEED LIMIT	R2-1	36" x 48"
PHOTO ENFORCED	R10-1108b	36" x 18"
MINIMUM	RP2-1106	36" x 18"

WORK ZONE	W21-1115(0)	36" x 18"
SPEED LIMIT	R2-1	36" x 48"
PHOTO ENFORCED	R10-1108b	36" x 18"
MINIMUM	RP2-1106	36" x 18"



FILE NAME =	USER NAME = paraynoal	DESIGNED -	REVISED -
Default	Default	DRAWN -	REVISED -
	PLOT SCALE = 100.0000' / in.	CHECKED -	REVISED -
	PLOT DATE = 3/18/2014	DATE -	REVISED -

**STATE OF ILLINOIS  
DEPARTMENT OF TRANSPORTATION**

**SUGGESTED STAGING AND TRAFFIC CONTROL STAGE 2  
IL. ROUTE 171 (ARCHER AVE.) AT 104TH AVE.**

SCALE: 1"=50'      SHEET    OF    SHEETS    STA.            TO STA.

F.A.U. RTE.	SECTION	COUNTY	TOTAL SHEETS	SHEET NO.
3565	B-N-5	COOK	129	38
<b>CONTRACT NO. 60T24</b>				
ILLINOIS FED. AID PROJECT				