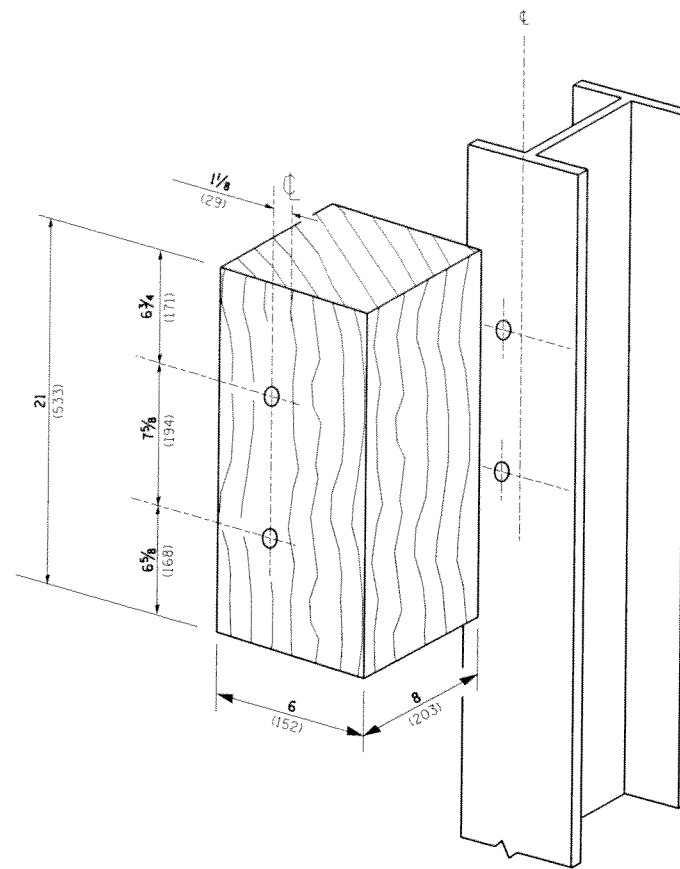
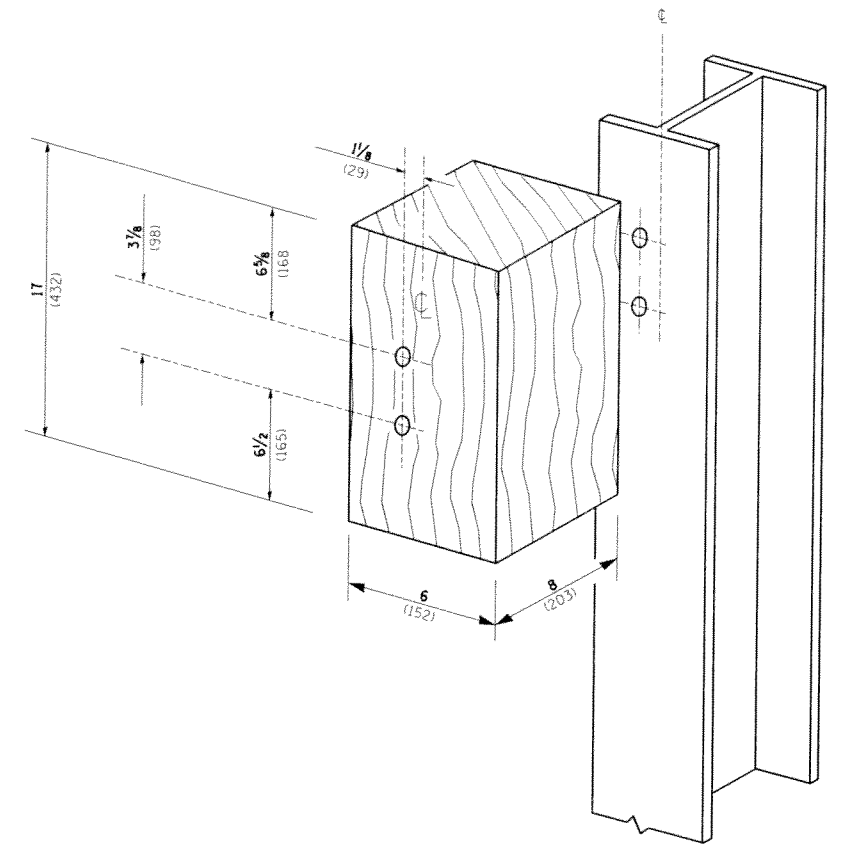


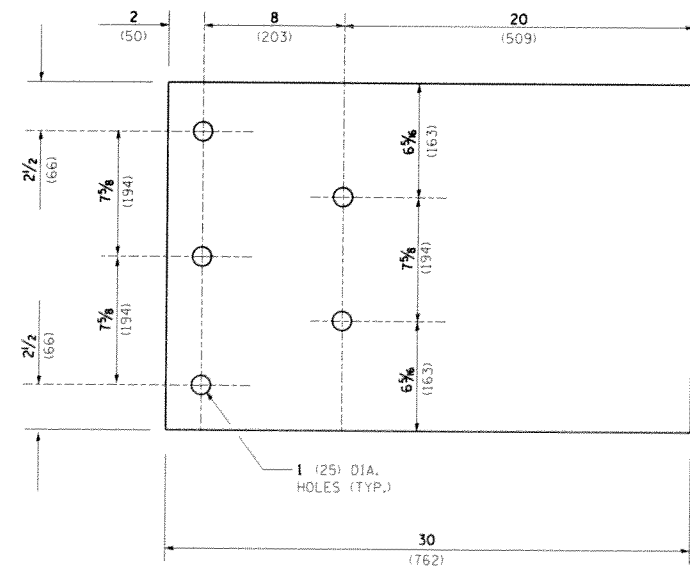
**THRIE BEAM END SHOE DETAIL**



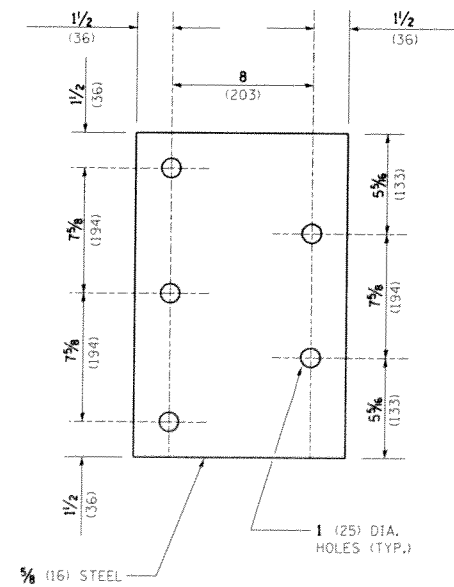
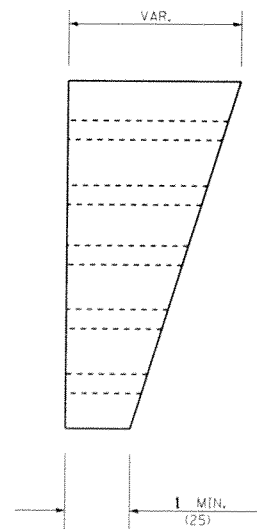
**POSTS 1-11 WOOD BLOCKOUT DETAIL**



**POST 12 WOOD BLOCKOUT DETAIL**



**PARAPET WOOD BLOCK-OUT DETAIL**



**PARAPET STEEL BEARING PLATE DETAIL**

(5 EACH INDIVIDUAL 5x5x3/8 (125x125x16) STEEL PLATES WITH CENTERED 1 (25) HOLES MAY BE SUBSTITUTED FOR THE PLATE SHOWN.)

FILE NAME = c:\pwork\pwork\stedps\0329923\Dist\std.dgn	USER NAME = stedpa	DESIGNED - DRAWN -	REVISED - STATE STANDARD; 631031-05 - 02/19/2008	<b>STATE OF ILLINOIS DEPARTMENT OF TRANSPORTATION</b>	<b>TYPE 6 TERMINAL FOR USE WITH 21" HIGH SPBGR</b>		F.A.P. RTE. 557	SECTION 2013-0481	COUNTY KANE	TOTAL SHEETS 24	SHEET NO. 21
PLOT SCALE = 100.0000 / 1 in.	CHECKED -	REVISD -	SCALE: NONE		SHEET NO. 3 OF 3 SHEETS	STA.	TO STA.	<b>BM 22</b>		<b>CONTRACT NO. 60X02</b>	
PLOT DATE = 3/28/2014	DATE -	REVISD -	FED. ROAD DIST. NO. 1 ILLINOIS FED. AID PROJECT								