

IL. 171	PT* 7044	N 1879130.6816	E 1121784.8522	STA. 30+00.00
	PT* 7000	N 1880330.6563	E 1121744.1614	STA. 42+00.664
	PT* 7045	N 1881429.3757	E 1121707.3266	STA. 53+00.001
	PC CURVE 1	N 1882726.8770	E 1121662.6138	STA. 65+98.273
	PI CURVE 1	N 1883257.4819	E 1121644.3288	STA. 71+29.192
FOREST AVE./ RIDGEWOOD RD.	PT CURVE 1	N 1883541.4407	E 1121195.7274	STA. 75+75.160
	PT* A103	N 1883727.3582	E 1120902.0128	STA. 79+22.771
	PC CURVE 1	N 1880301.0863	E 1120786.9535	STA. 10+00
	PI CURVE 1	N 1880295.4083	E 1120829.6085	STA. 10+43.031
	PT CURVE 1	N 1880273.5203	E 1120866.6571	STA. 10+84.904
	PC CURVE 2	N 1880242.7141	E 1120918.8011	STA. 11+45.469
	PI CURVE 2	N 1880195.0699	E 1120999.4458	STA. 12+39.136
	PT CURVE 2	N 1880190.8708	E 1121093.0188	STA. 13+29.058
	PC CURVE 3	N 1880190.8708	E 1121093.0188	STA. 13+29.058
	PI CURVE 3	N 1880188.8053	E 1121139.0454	STA. 13+75.131
	PT CURVE 3	N 1880193.0314	E 1121184.9241	STA. 14+21.061
	PC CURVE 4	N 1880199.0863	E 1121250.6567	STA. 14+87.072
	PI CURVE 4	N 1880212.1113	E 1121392.0583	STA. 16+29.072
	PT CURVE 4	N 1880267.7293	E 1121522.7131	STA. 17+68.785
	PC CURVE 5	N 1880289.9251	E 1121574.8545	STA. 18+25.454
	PI CURVE 5	N 1880327.5260	E 1121663.1844	STA. 19+21.454
PT CURVE 5	N 1880331.4863	E 1121759.1028	STA. 20+15.362	
PT* 7046	N 1880361.7924	E 1122493.1126	STA. 27+49.998	

CP #11
SET CUT CROSS IN WALK
N.: 1880301.426
E.: 1120906.925
ELEV.=616.81
STA. 11+05.40, 44.5' LT
S 59° 25' 32.849" E

EXIST. CURVE E_RIDGE-1 PI STA. = 10+43.03 Δ = 22° 59' 31" (RT) D = 27° 04' 47" R = 211.58' T = 43.03' L = 84.90' E = 4.33' e = ---- T.R. = ---- S.E. RUN = ---- P.C. STA. = 10+00.00 P.T. STA. = 10+84.90	EXIST. CURVE E_RIDGE-2 PI STA. = 12+39.14 Δ = 28° 00' 17" (LT) D = 15° 15' 14" R = 375.61' T = 93.67' L = 183.59' E = 11.50' e = ---- T.R. = ---- S.E. RUN = ---- P.C. STA. = 11+45.47 P.T. STA. = 13+29.06	EXIST. CURVE E_RIDGE-3 PI STA. = 13+75.13 Δ = 7° 49' 56" (LT) D = 8° 30' 48" R = 673.02' T = 46.07' L = 92.00' E = 1.58' e = ---- T.R. = ---- S.E. RUN = ---- P.C. STA. = 13+29.06 P.T. STA. = 14+21.06	EXIST. CURVE E_RIDGE-4 PI STA. = 16+29.07 Δ = 17° 47' 45" (LT) D = 6° 19' 01" R = 907.01' T = 142.00' L = 281.71' E = 11.05' e = ---- T.R. = ---- S.E. RUN = ---- P.C. STA. = 14+87.07 P.T. STA. = 17+68.79	EXIST. CURVE E_RIDGE-5 PI STA. = 19+21.45 Δ = 20° 41' 40" (RT) D = 10° 53' 50" R = 525.79' T = 96.00' L = 189.91' E = 8.69' e = ---- T.R. = ---- S.E. RUN = ---- P.C. STA. = 18+25.45 P.T. STA. = 20+15.36
---	---	---	---	--

CP #6
SET CUT CROSS IN WALK
N.: 1880245.742
E.: 1121343.557
ELEV.=616.10
STA. 15+87.67, 32.6' LT
N 84° 44' 13.610" E

CP #9
CUT SQUARE IN N. SIDE
OF SIGNAL BASE
N.: 1880346.347
E.: 1121688.253
ELEV.=614.87
STA. 19+47.85, 22.3' LT

CP #8
NW. BOLT OF FIRE HYDRANT
N.: 1880730.172
E.: 1121687.245
ELEV.=617.25
STA. 46+01.86, 43.5' LT

CP #4
FOUND CUT CROSS
N.: 1880362.809
E.: 1121700.453
ELEV.=614.66
STA. 19+61.70, 36.6' LT

CP #5
SET REBAR
N.: 1880872.760
E.: 1121686.737
ELEV.=614.71
STA. 47+44.39, 39.2' LT

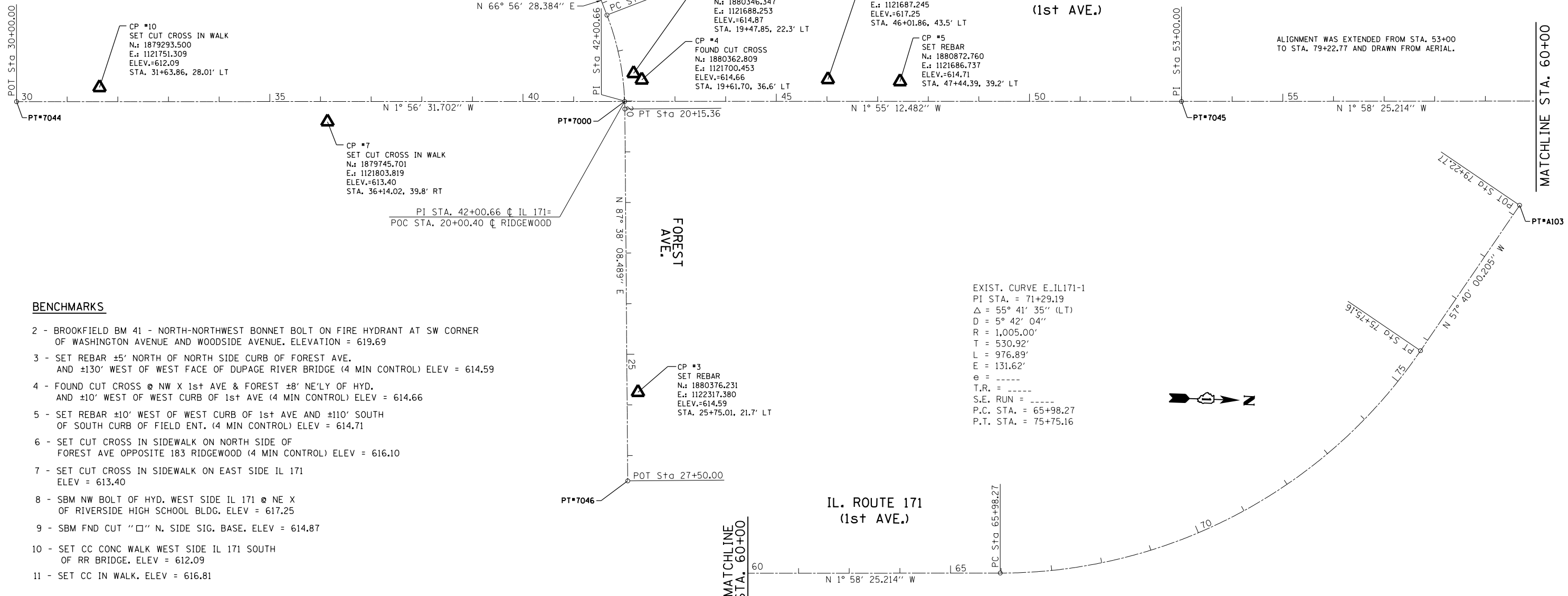
CP #10
SET CUT CROSS IN WALK
N.: 1879293.500
E.: 1121751.309
ELEV.=612.09
STA. 31+63.86, 28.01' LT

CP #7
SET CUT CROSS IN WALK
N.: 1879745.701
E.: 1121803.819
ELEV.=613.40
STA. 36+14.02, 39.8' RT

PI STA. 42+00.66 @ IL 171=
POC STA. 20+00.40 @ RIDGEWOOD

CP #3
SET REBAR
N.: 1880376.231
E.: 1122317.380
ELEV.=614.59
STA. 25+75.01, 21.7' LT

EXIST. CURVE E_IL171-1
PI STA. = 71+29.19
Δ = 55° 41' 35" (LT)
D = 5° 42' 04"
R = 1,005.00'
T = 530.92'
L = 976.89'
E = 131.62'
e = ----
T.R. = ----
S.E. RUN = ----
P.C. STA. = 65+98.27
P.T. STA. = 75+75.16



BENCHMARKS

- 2 - BROOKFIELD BM 41 - NORTH-NORTHWEST BONNET BOLT ON FIRE HYDRANT AT SW CORNER OF WASHINGTON AVENUE AND WOODSIDE AVENUE. ELEVATION = 619.69
- 3 - SET REBAR ±5' NORTH OF NORTH SIDE CURB OF FOREST AVE. AND ±130' WEST OF WEST FACE OF DUPAGE RIVER BRIDGE (4 MIN CONTROL) ELEV = 614.59
- 4 - FOUND CUT CROSS @ NW X 1st AVE & FOREST ±8' NE'LY OF HYD. AND ±10' WEST OF WEST CURB OF 1st AVE (4 MIN CONTROL) ELEV = 614.66
- 5 - SET REBAR ±10' WEST OF WEST CURB OF 1st AVE AND ±110' SOUTH OF SOUTH CURB OF FIELD ENT. (4 MIN CONTROL) ELEV = 614.71
- 6 - SET CUT CROSS IN SIDEWALK ON NORTH SIDE OF FOREST AVE OPPOSITE 183 RIDGEWOOD (4 MIN CONTROL) ELEV = 616.10
- 7 - SET CUT CROSS IN SIDEWALK ON EAST SIDE IL 171 ELEV = 613.40
- 8 - SBM NW BOLT OF HYD. WEST SIDE IL 171 @ NE X OF RIVERSIDE HIGH SCHOOL BLDG. ELEV = 617.25
- 9 - SBM FND CUT "□" N. SIDE SIG. BASE. ELEV = 614.87
- 10 - SET CC CONC WALK WEST SIDE IL 171 SOUTH OF RR BRIDGE. ELEV = 612.09
- 11 - SET CC IN WALK. ELEV = 616.81

FILE NAME =	USER NAME = tariqfm	DESIGNED -	REVISED -	STATE OF ILLINOIS DEPARTMENT OF TRANSPORTATION	IL. ROUTE 171 AT FOREST AVE./RIDGEWOOD RD. ALIGNMENT, TIES AND BENCHMARKS	F.A.P. RTE.	SECTION	COUNTY	TOTAL SHEETS	SHEET NO.	
Default	2-sht-ATB.dgn	DRAWN - D.B.	REVISED -			372	03035-TS	COOK	87	22	
	PLOT SCALE = 200.0000' / in.	CHECKED -	REVISED -			CONTRACT NO. 60X08					
	PLOT DATE = 4/2/2014	DATE -	REVISED -			ILLINOIS FED. AID PROJECT					