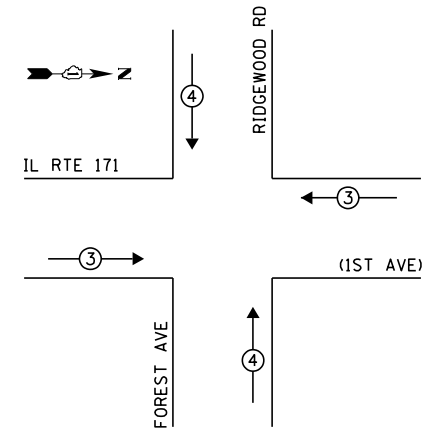


PHASE DESIGNATION DIAGRAM



EMERGENCY VEHICLE PREEMPTION SEQUENCE

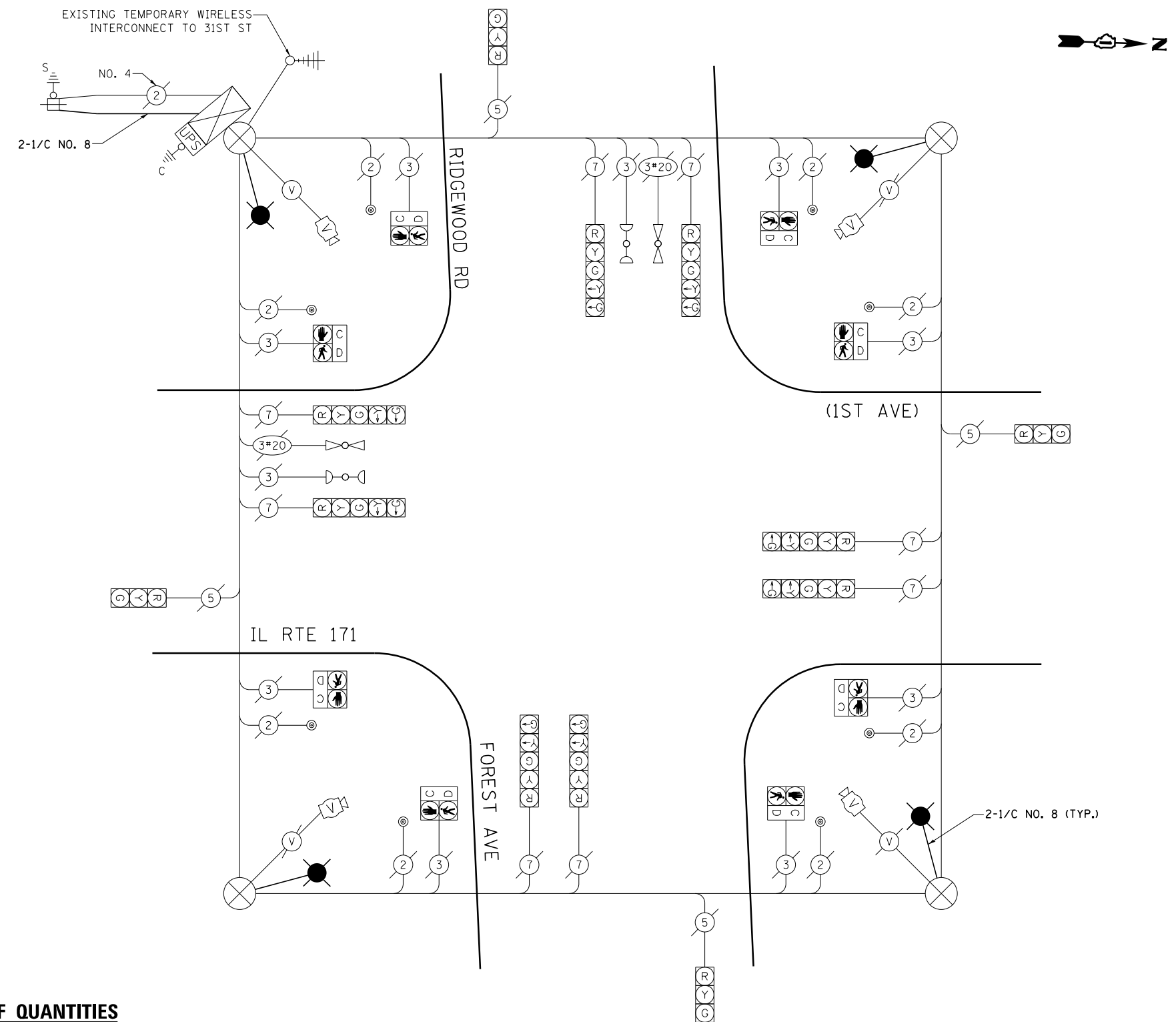
EXISTING EMERGENCY VEHICLE PREEMPTORS		
EMERGENCY VEHICLE PREEMPTOR	3	4
MOVEMENT	—	

I.D.O.T. TRAFFIC SIGNAL INSTALLATION ELECTRICAL SERVICE REQUIREMENTS					TOTAL WATTAGE
TYPE	NO. OF LAMPS	WATTAGE		% OPERATION	
SIGNAL (RED)	12	INCAND.	17	0.50	102.0
(YELLOW)	12		25	0.25	75.0
(GREEN)	12		15	0.25	45.0
ARROW	16		12	0.10	19.2
PED. SIGNAL	8		25	1.00	200.0
CONTROLLER	1		100	1.00	100.0
ILLUM. SIGN	-		25	0.05	-
VIDEO SYSTEM	1		150	1.00	150.0
LUMINAIRE	4		310	0.50	620.0
FLASHER				0.50	
ENERGY COSTS TO:				TOTAL =	1311.2

ILLINOIS DEPARTMENT OF TRANSPORTATION
 DIVISION OF HIGHWAY/DISTRICT 1
 201 WEST CENTER COURT/SCHAUMBURG, ILLINOIS 60196-1096
 ENERGY SUPPLY: CONTACT: JOE STACHO
 PHONE: (630) 424-5704
 COMPANY: COMMONWEALTH EDISON

LEGEND:

- ← * → SINGLE ENTRY PHASE
- ← ⊕ → DUAL ENTRY PHASE
- ← ⊕ → PEDESTRIAN PHASE



EX. SPAN WIRE CABLE PLAN
(NOT TO SCALE)

SCHEDULE OF QUANTITIES

ITEM DESCRIPTION	UNITS	TOTAL QTY.
AERIAL CABLE, 2-1/C NO. 8 WITH MESSENGER WIRE	FOOT	1425
LUMINAIRE, SODIUM VAPOR, HORIZONTAL MOUNT, PHOTO-CELL CONTROL, 310 WATT	EACH	4
MODIFY EXISTING CONTROLLER CABINET	EACH	1

NOTE:
 THE TRAFFIC SIGNAL CONTROLLER EQUIPMENT FOR THIS PROJECT SHALL BE "ECONOLITE" TO MATCH THE EXISTING ADJACENT SYSTEM.

FILE NAME =	USER NAME = plascencia	DESIGNED - IP	REVISED -
et:\pw_work\p\idot\plascencia\14412-TS.dgn		DRAWN - IP	REVISED -
Default	PLOT SCALE = 40.0000' / in.	CHECKED - LP	REVISED -
	PLOT DATE = 3/28/2014	DATE - 3/15/14	REVISED -

STATE OF ILLINOIS
DEPARTMENT OF TRANSPORTATION

TEMPORARY CABLE PLAN, TEMPORARY PHASE DESIGNATION DIAGRAM, AND TEMPORARY EMERGENCY VEHICLE PREEMPTION SEQUENCE IL RTE 171 (1ST AVE) AND FOREST AVE / RIDGEWOOD RD
 SCALE: NTS SHEET OF SHEETS STA. TO STA.

F.A.P. RTE.	SECTION	COUNTY	TOTAL SHEETS	SHEET NO.
372	03035-TS	COOK	87	51
CONTRACT NO. 60X08				
ILLINOIS FED. AID PROJECT				

TS 3260