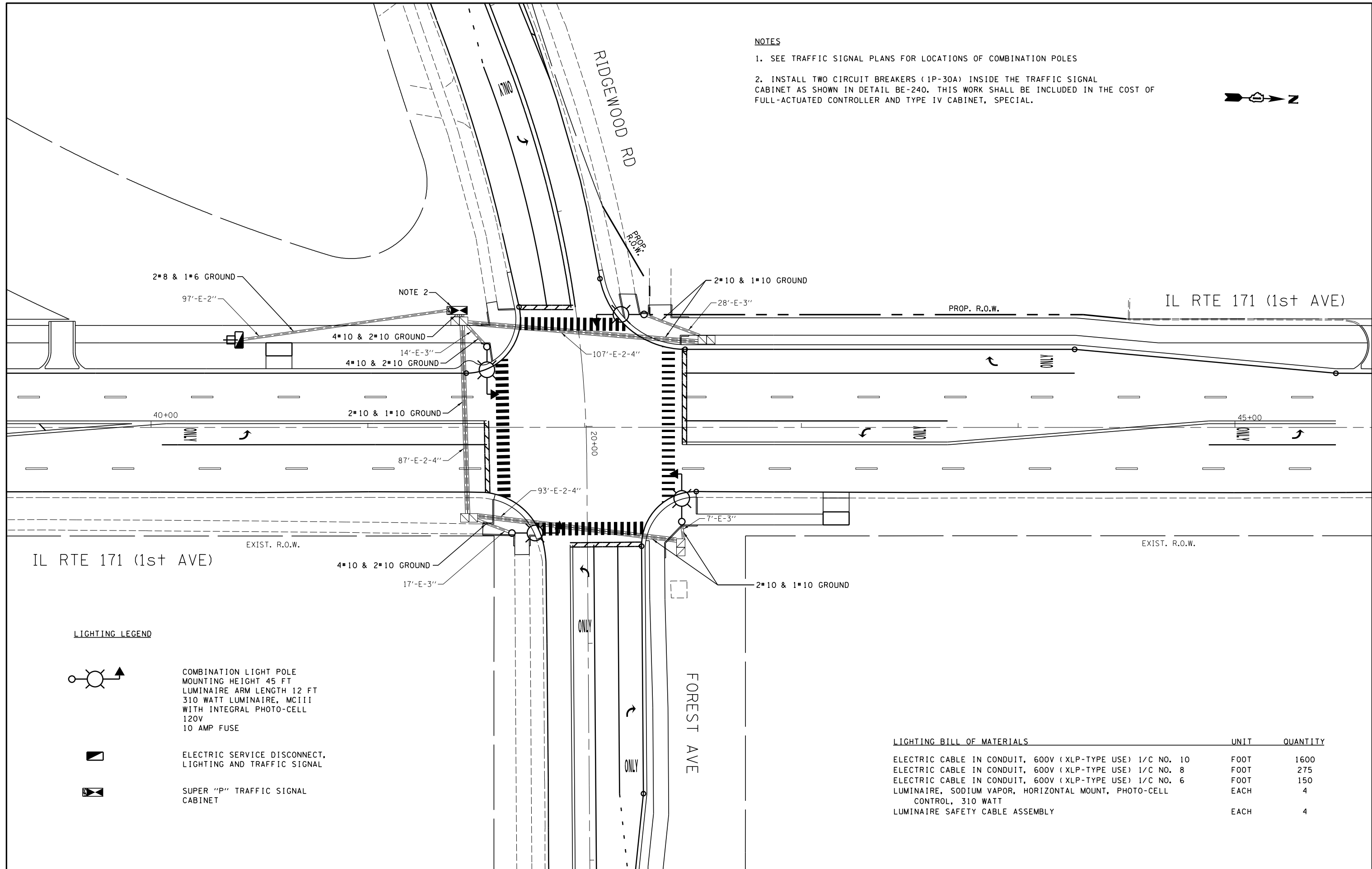
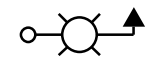


NOTES

1. SEE TRAFFIC SIGNAL PLANS FOR LOCATIONS OF COMBINATION POLES
2. INSTALL TWO CIRCUIT BREAKERS (1P-30A) INSIDE THE TRAFFIC SIGNAL CABINET AS SHOWN IN DETAIL BE-240. THIS WORK SHALL BE INCLUDED IN THE COST OF FULL-ACTUATED CONTROLLER AND TYPE IV CABINET, SPECIAL.



LIGHTING LEGEND



COMBINATION LIGHT POLE
MOUNTING HEIGHT 45 FT
LUMINAIRE ARM LENGTH 12 FT
310 WATT LUMINAIRE, MCIII
WITH INTEGRAL PHOTO-CELL
120V
10 AMP FUSE



ELECTRIC SERVICE DISCONNECT,
LIGHTING AND TRAFFIC SIGNAL



SUPER "P" TRAFFIC SIGNAL
CABINET

LIGHTING BILL OF MATERIALS

	UNIT	QUANTITY
ELECTRIC CABLE IN CONDUIT, 600V (XLP-TYPE USE) 1/C NO. 10	FOOT	1600
ELECTRIC CABLE IN CONDUIT, 600V (XLP-TYPE USE) 1/C NO. 8	FOOT	275
ELECTRIC CABLE IN CONDUIT, 600V (XLP-TYPE USE) 1/C NO. 6	FOOT	150
LUMINAIRE, SODIUM VAPOR, HORIZONTAL MOUNT, PHOTO-CELL CONTROL, 310 WATT	EACH	4
LUMINAIRE SAFETY CABLE ASSEMBLY	EACH	4

FILE NAME =	USER NAME = plascencia	DESIGNED - IP	REVISED -
ca:\pwork\pwork\plascencia\0370834\F114412-TS.dgn		DRAWN - IP	REVISED -
Default	PLOT SCALE = 40.0000' / in.	CHECKED - LP	REVISED -
	PLOT DATE = 3/28/2014	DATE - 3/15/14	REVISED -

**STATE OF ILLINOIS
DEPARTMENT OF TRANSPORTATION**

**COMBINATION LIGHTING PLAN
IL RTE 171 (1ST AVE) AND FOREST AVE / RIDGEWOOD RD**

F.A.P. RTE.	SECTION	COUNTY	TOTAL SHEETS	SHEET NO.
372	03035-TS	COOK	87	60
CONTRACT NO. 60X08				
ILLINOIS FED. AID PROJECT				

SCALE: SHEET OF SHEETS STA. TO STA.