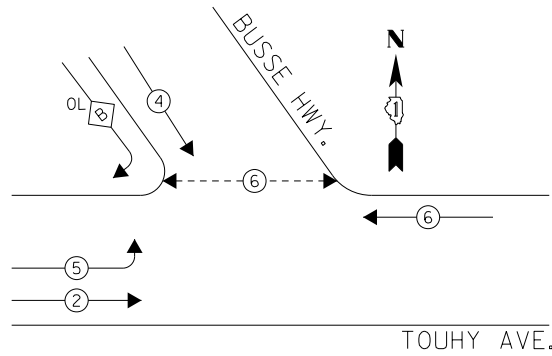




EXISTING CONTROLLER SEQUENCE

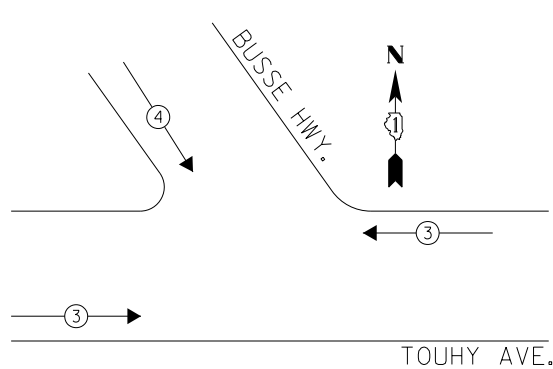


- LEGEND**
- ← ● → DUAL ENTRY PHASE
  - ← ◊ → OVERLAP
  - ← - - ● - - → PEDESTRIAN PHASE
  - NUMBER REFERS TO ASSOCIATED PHASE

**RIGHT TURN OVERLAP PHASE DESIGNATION**

OVERLAP LETTER	PERMISSIVE PHASE	PROTECTED PHASE
B	= 4	+ 5

PHASE DESIGNATION DIAGRAM



THE TRAFFIC SIGNAL CONTROL EQUIPMENT FOR THIS PROJECT SHALL BE "ECONOLITE" TO MATCH THE EXISTING ADJACENT SYSTEM.

EXISTING EMERGENCY VEHICLE PREEMPTION SEQUENCE

EMERGENCY VEHICLE PREEMPTORS		
EMERGENCY VEHICLE PREEMPTOR	3	4
MOVEMENT	← →	↘

**I. D. O. T. TRAFFIC SIGNAL INSTALLATION ELECTRICAL SERVICE REQUIREMENTS**

TYPE	NO. LAMPS	WATTAGE INCAND.	WATTAGE LED	%OPERATION	TOTAL WATTAGE
SIGNAL (RED)	11	-	17	0.50	93.5
(YELLOW)	11	-	25	0.25	68.75
(GREEN)	11	-	15	0.25	41.25
ARROW	8	-	12	0.10	9.6
PED. SIGNAL	2	-	25	1.00	50.0
CONTROLLER	1	100	-	1.00	100.0
ILLUM. SIGN	-	-	25	0.50	-
VIDEO SYSTEM	-	150	-	1.00	-
BATTERY BACKUP	1	25	-	1.00	25.0
LUMINAIRE	2	400	-	0.50	400.0
FLASHER	-	-	25	0.50	-
<b>TOTAL =</b>				<b>788.1</b>	

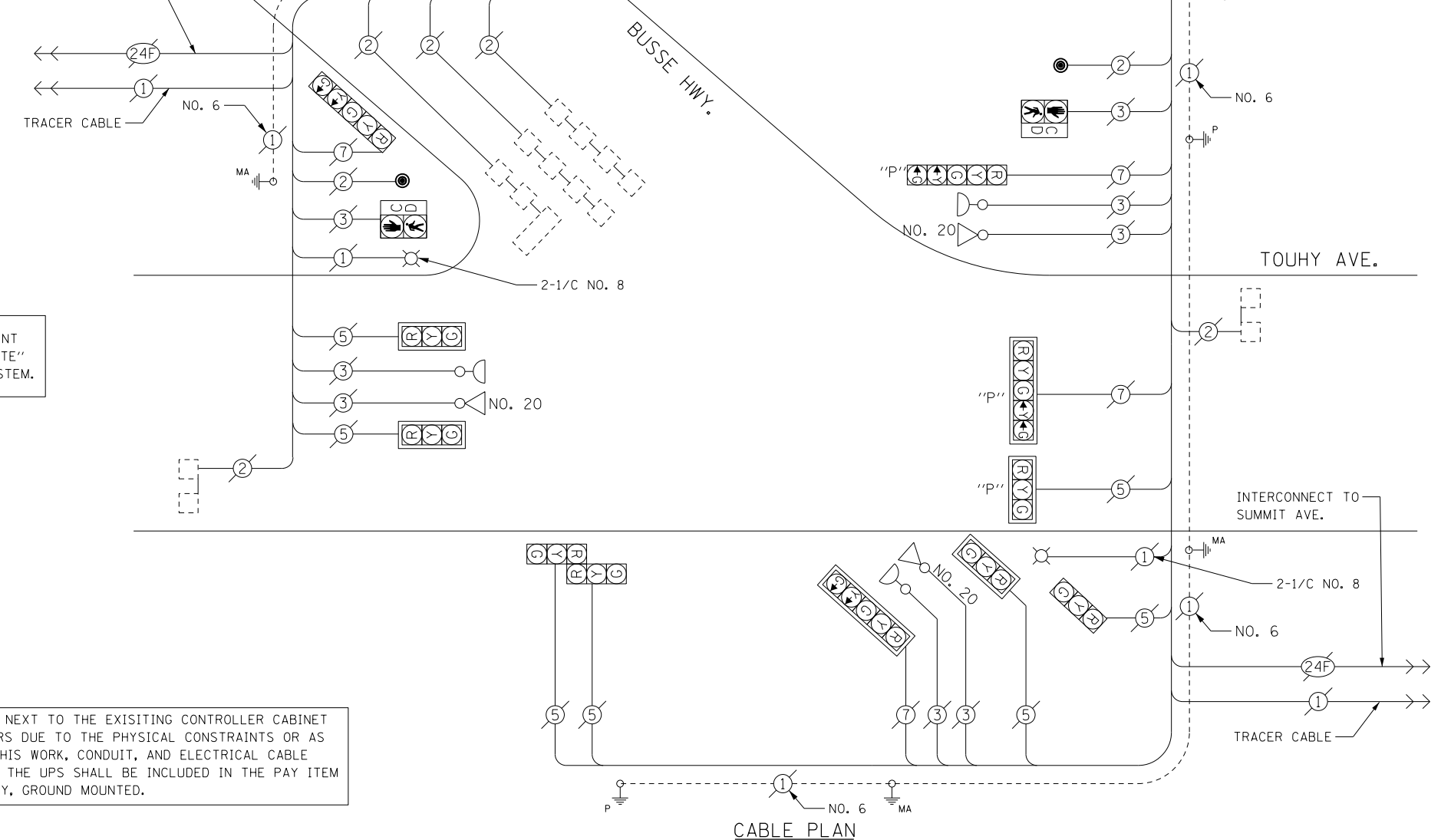
**ENERGY COSTS-** BILLED TO: IDOT DISTRICT 1  
201 WEST CENTER COURT  
SCHAUMBURG, IL 60196-1096

**ENERGY SUPPLY-** CONTACT: TERRI BLECK  
PHONE: 847-816-5239  
COMMONWEALTH EDISON

SCHEDULE OF QUANTITIES

ITEMS	UNIT	QUANTITY
MAINTENANCE OF EXISTING TRAFFIC SIGNAL INSTALLATION	EACH	1
PEDESTRIAN PUSH-BUTTON	EACH	2
MODIFY EXISTING CONTROLLER CABINET	EACH	1
REMOVE EXISTING TRAFFIC SIGNAL EQUIPMENT	EACH	1
UNINTERRUPTABLE POWER SUPPLY, GROUND MOUNTED	EACH	1

INTERCONNECT TO CUMBERLAND AVE.



CABLE PLAN

THE UPS SHALL BE INSTALLED NEXT TO THE EXISTING CONTROLLER CABINET USING HELICAL GROUND ANCHORS DUE TO THE PHYSICAL CONSTRAINTS OR AS DIRECTED BY THE ENGINEER. THIS WORK, CONDUIT, AND ELECTRICAL CABLE NEEDED TO PROPERLY INSTALL THE UPS SHALL BE INCLUDED IN THE PAY ITEM UNINTERRUPTABLE POWER SUPPLY, GROUND MOUNTED.

**REMOVAL OF EXISTING TRAFFIC SIGNAL EQUIPMENT**  
THE FOLLOWING ITEMS SHALL BE REMOVED BY THE CONTRACTOR AND SHALL BE DISPOSED OF BY THEM OUTSIDE THE RIGHT-OF-WAY AT THEIR EXPENSE. THE SALVAGE VALUE OF THE REMOVED EQUIPMENT SHALL BE REFLECTED IN THE CONTRACT BID PRICE.

2 EACH PEDESTRIAN PUSH-BUTTON

TS 9240  
PARK RIDGE