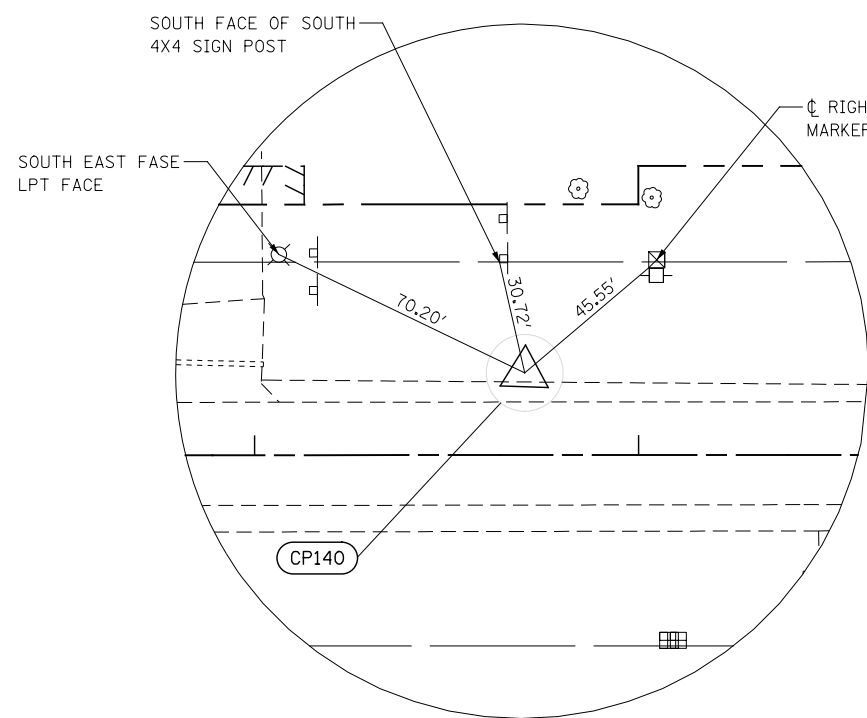
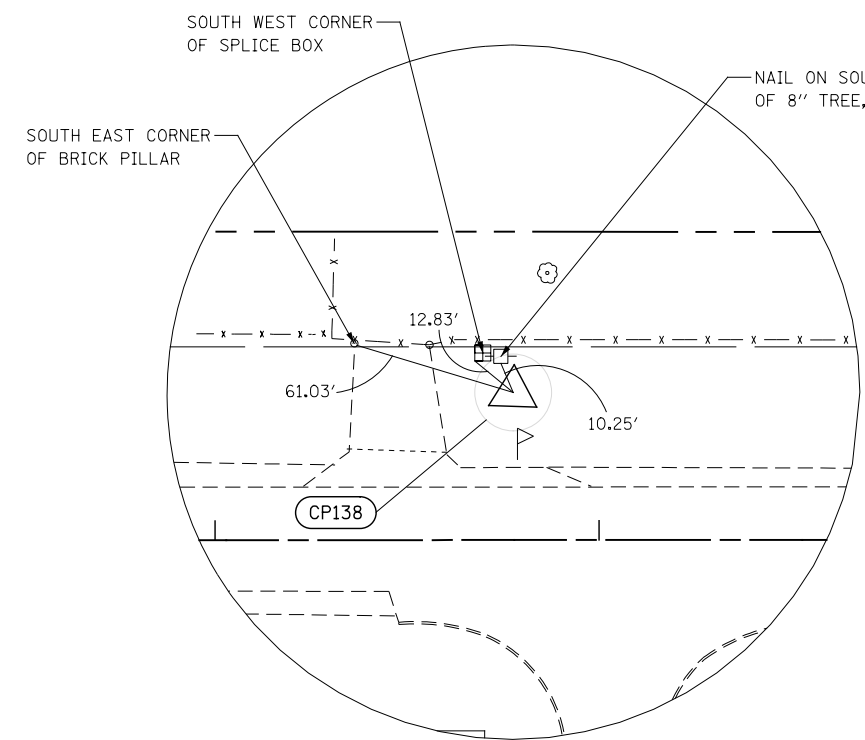


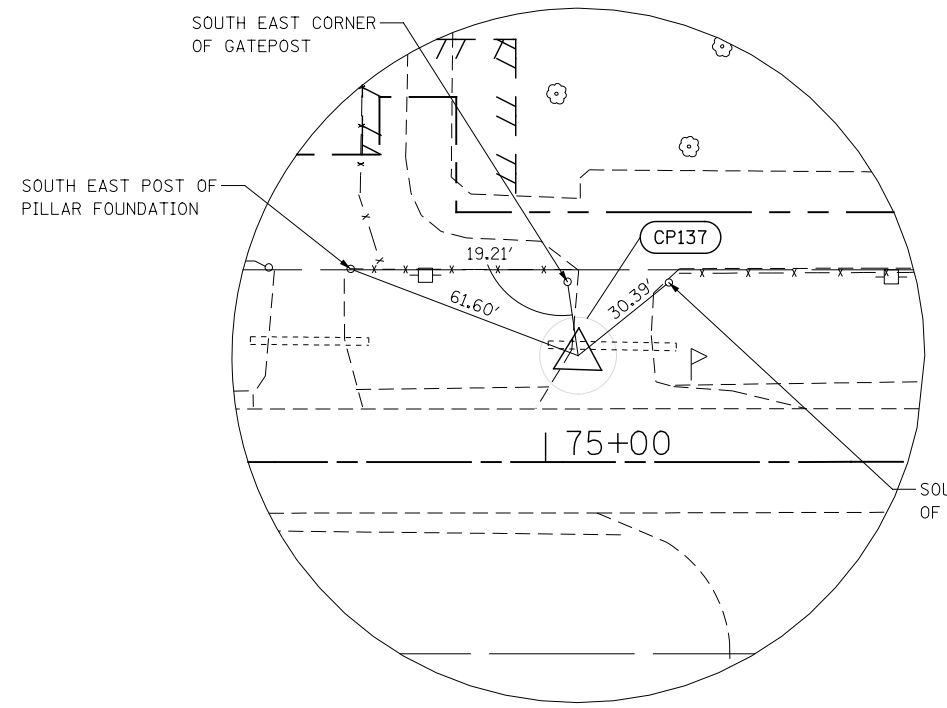
FILE NAME = D:\60X92-shr-ATB-13-11es.dgn



CONTROL POINT 140
 STA. 57+70.36 21.39' LT
 CAPPED IRON ROD
 N 1796539.715
 E 1078005.840
 ELEV. = 778.12



CONTROL POINT 138
 STA. 68+77.67 38.44' LT
 CAPPED IRON ROD
 N 1796595.951
 E 1079111.850
 ELEV. = 772.71



CONTROL POINT 137
 STA. 75+08.42 27.68' LT
 NAIL
 N 1796607.522
 E 1079742.588
 ELEV. = 773.61

USER NAME = malberts	DESIGNED MEA	REVISED -
DRAWN MEA	REVISED -	
PLOT SCALE = 1:50.0003	CHECKED PJO	REVISED -
PLOT DATE = 4/1/2014	DATE 3/11/2014	REVISED -

**STATE OF ILLINOIS
 DEPARTMENT OF TRANSPORTATION**

ALIGNMENT, BENCHMARKS, AND TIES

SCALE: AS SHOWN | SHEET NO. 13 OF 20 SHEETS | STA. TO STA.

F.A.P. RTE.	SECTION	COUNTY	TOTAL SHEETS	SHEET NO.
351	536-R-1	WILL/COOK	207	26
CONTRACT NO. 60X92				
ILLINOIS FED. AID PROJECT				