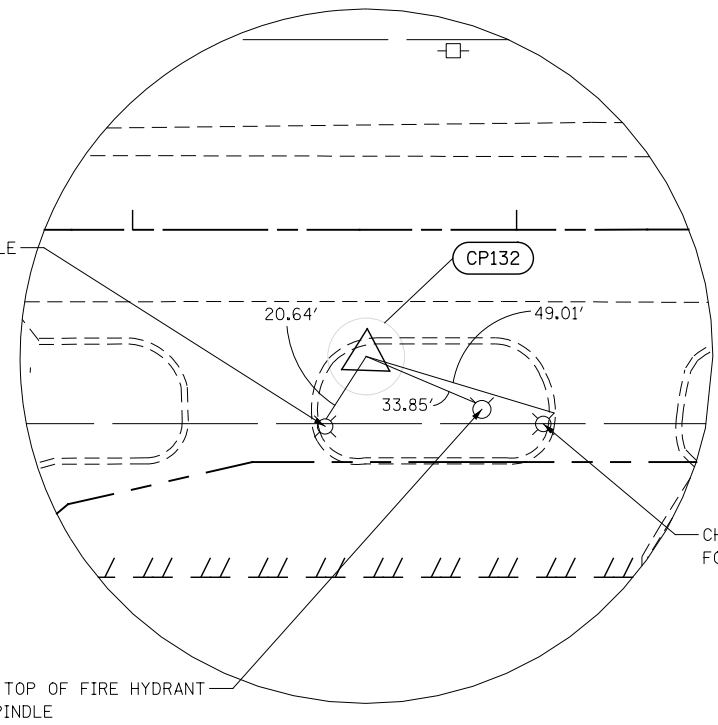
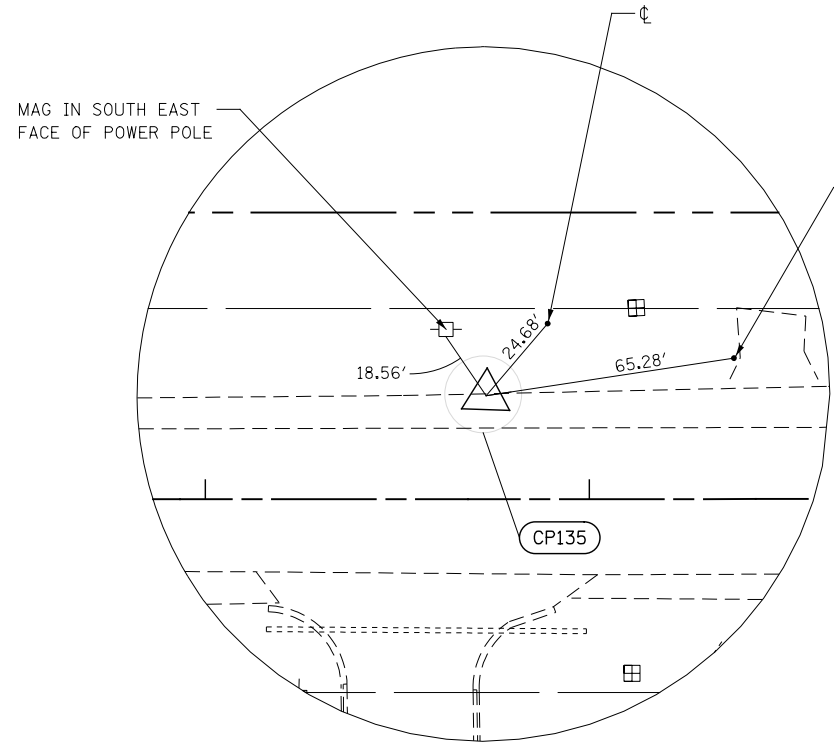


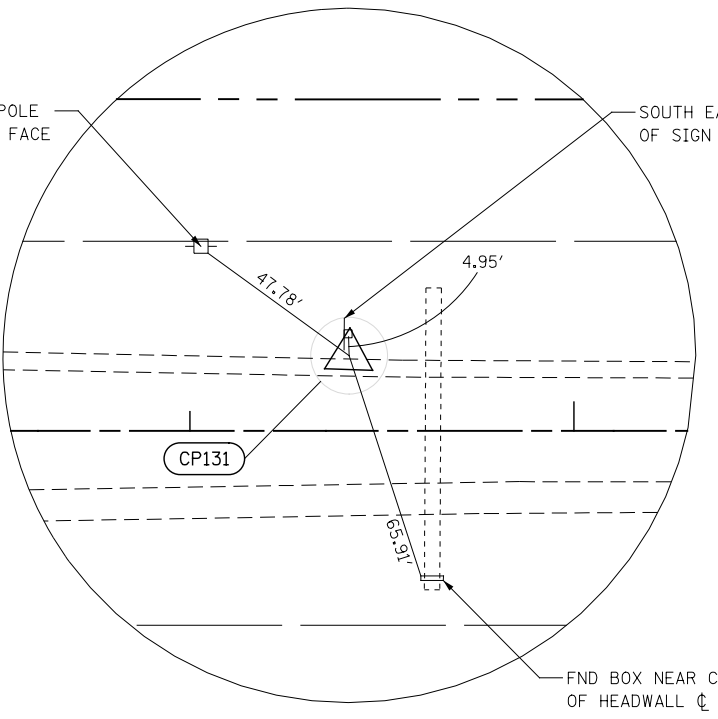
CONTROL POINT 136
 STA. 80+55.46 22.37' RT
 CAPPED IRON ROD
 N 1796576.866
 E 1080291.055
 ELEV. = 775.13



CONTROL POINT 132
 STA. 92+60.80 33.01' RT
 CAPPED IRON ROD
 N 1796608.859
 E 1081496.008
 ELEV. = 785.49



CONTROL POINT 135
 STA. 86+73.15 26.95' LT
 CAPPED IRON ROD
 N 1796649.015
 E 1080906.606
 ELEV. = 785.89



CONTROL POINT 131
 STA. 99+41.43 19.58' LT
 CAPPED IRON ROD
 N 1796685.370
 E 1082174.363
 ELEV. = 784.34

FILE NAME = D:\60X92-shr-ATB-14-11-es.dgn

USER NAME = malberts	DESIGNED MEA	REVISED -
PLOT SCALE = 1:50.0003	DRAWN MEA	REVISED -
PLOT DATE = 4/1/2014	CHECKED PJO	REVISED -
	DATE 3/11/2014	REVISED -

**STATE OF ILLINOIS
 DEPARTMENT OF TRANSPORTATION**

ALIGNMENT, BENCHMARKS, AND TIES
 SCALE: AS SHOWN SHEET NO. 14 OF 20 SHEETS STA. TO STA.

F.A.P. RTE.	SECTION	COUNTY	TOTAL SHEETS	SHEET NO.
351	536-R-1	WILL/COOK	207	27
CONTRACT NO. 60X92				
ILLINOIS FED. AID PROJECT				