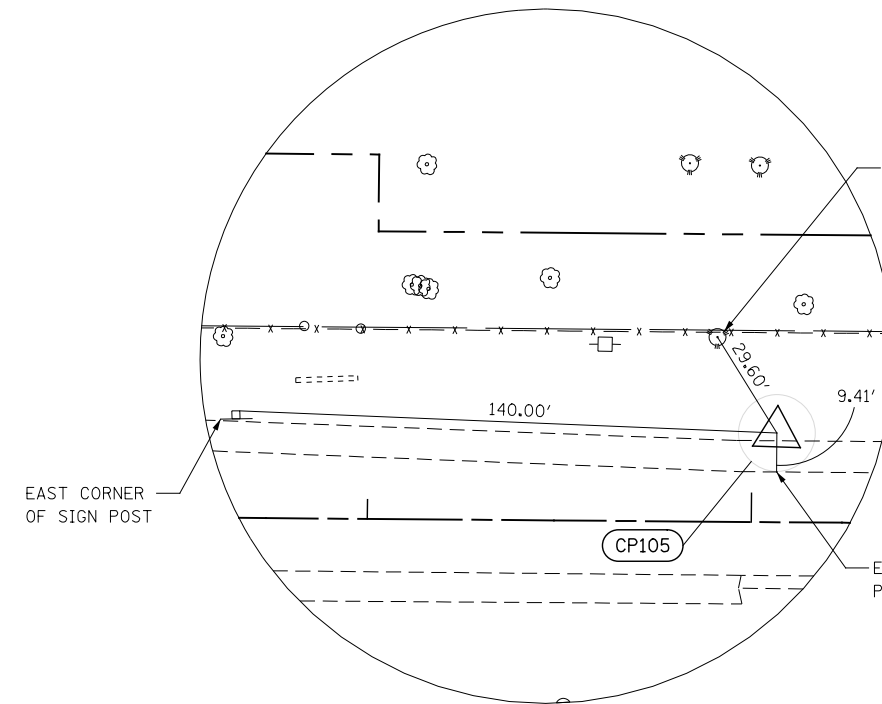
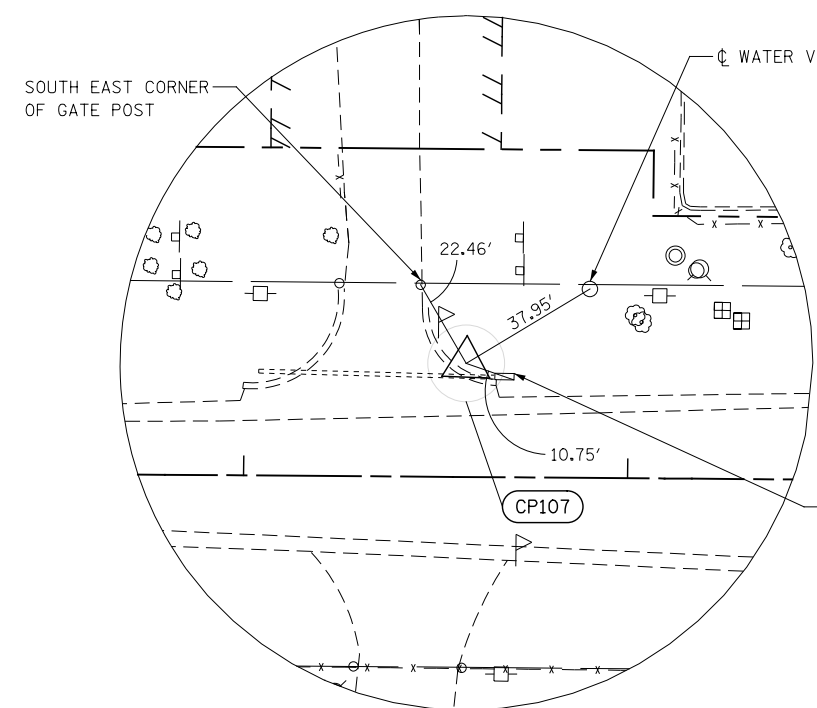


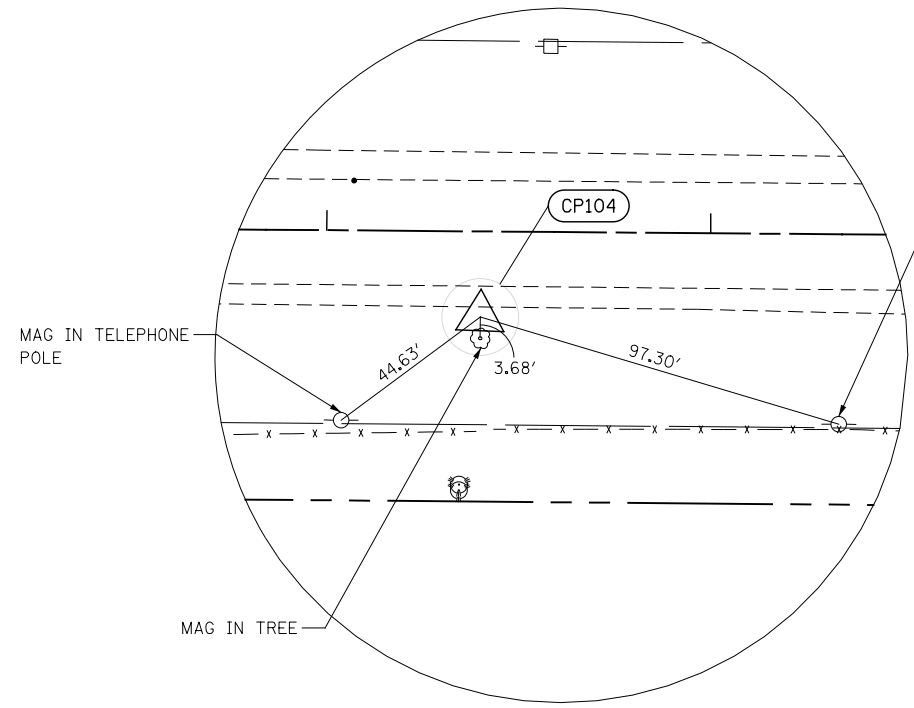
CONTROL POINT 110
 STA. 215+59.62 30.02' RT
 CAPPED IRON ROD
 N 1797031.5990
 E 1093787.5050
 ELEV. = 762.79



CONTROL POINT 105
 STA. 245+06.52 23.21' LT
 CAPPED IRON ROD
 N 1797166.2860
 E 1096731.6440
 ELEV. = 738.42



CONTROL POINT 107
 STA. 232+57.76 29.62' LT
 CAPPED IRON ROD
 N 1797138.932
 E 1095483.146
 ELEV. = 752.79



CONTROL POINT 104
 STA. 251+40.16 22.27' RT
 CAPPED IRON ROD
 N 1797137.939
 E 1097366.285
 ELEV. = 731.31

FILE NAME = D:\6092-shr-ATB-19-11es.dgn

USER NAME = malberts	DESIGNED MEA	REVISED -
PLOT SCALE = 1:50.0003	DRAWN MEA	REVISED -
PLOT DATE = 4/1/2014	CHECKED PJO	REVISED -
	DATE 3/11/2014	REVISED -

**STATE OF ILLINOIS
 DEPARTMENT OF TRANSPORTATION**

ALIGNMENT, BENCHMARKS, AND TIES
 SCALE: AS SHOWN SHEET NO. 19 OF 20 SHEETS STA. TO STA.

F.A.P. RTE.	SECTION	COUNTY	TOTAL SHEETS	SHEET NO.
351	536-R-1	WILL/COOK	207	32
CONTRACT NO. 60X92				
ILLINOIS FED. AID PROJECT				