

BENCHMARKS

BENCHMARK 1

WILL COUNTY GPS 524 - NGS PID AE2562 - A STAINLESS ROD WITH CAST CAP AND LID IN THE SOUTH TREE LAWN OF 159TH STREET APPROXIMATELY 120 FEET WEST OF THE CENTERLINE OF WILL-COOK ROAD.

PROJECT ELEVATION = 731.70

BENCHMARK 2

CROSS CUT ON WEST CORNER OF NORTH HEADWALL OF CULVERT RUNNING UNDER 159TH STREET APPROXIMATELY 200 FEET WEST OF 115TH COURT.

ELEVATION = 694.90

BENCHMARK 3

SOUTH BOLT ON FIRE HYDRANT ON SOUTH SIDE OF 159TH STREET, APPROXIMATELY 350 FEET WEST OF CENTERLINE OF WOLF ROAD.

ELEVATION = 718.46

BENCHMARK 4

NORTHWEST BOLT ON FIRE HYDRANT ON THE NORTHEAST CORNER OF THE EAST ENTRANCE TO THE AUTO DEALERSHIP AND 159TH STREET, APPROXIMATELY 1300 FEET EAST OF CENTERLINE OF WOLF ROAD.

ELEVATION = 709.06

BENCHMARK 5

SOUTH BOLT ON FIRE HYDRANT ON SOUTH SIDE OF 159TH STREET, APPROXIMATELY 125 FEET EAST OF CENTERLINE OF 108TH AVENUE.

ELEVATION = 703.83

BENCHMARK 6

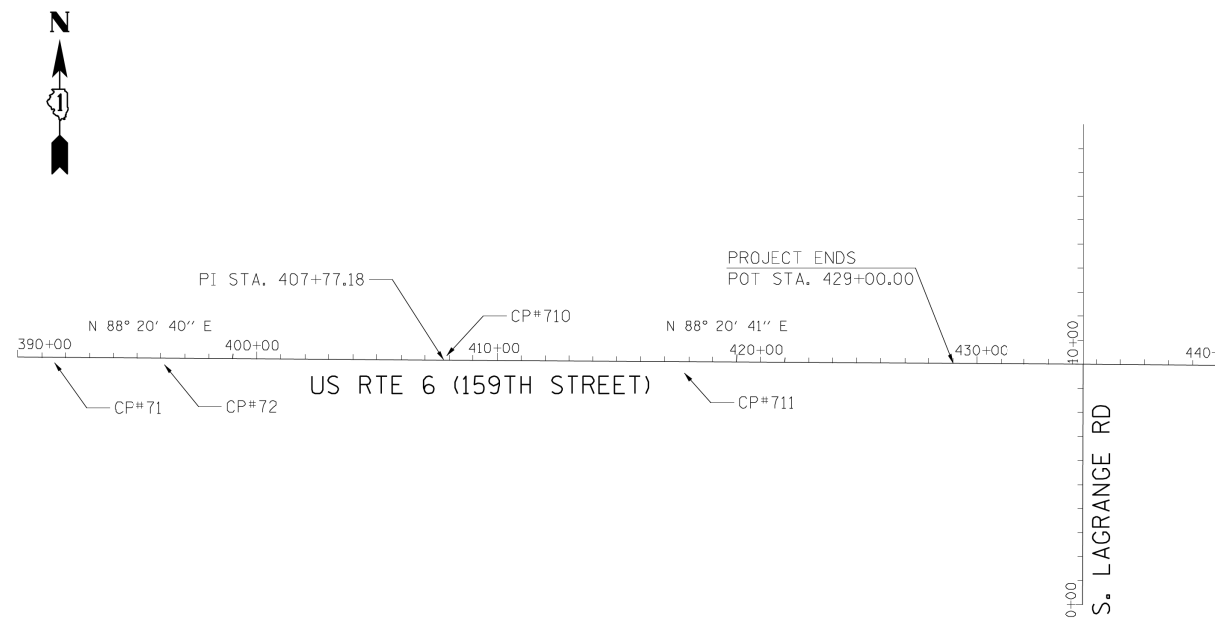
SQUARE CUT IN EASTERLY END OF THE SOUTH HEADWALL OF CULVERT RUNNING UNDER 159TH STREET JUST WEST OF 104TH AVENUE.

ELEVATION = 689.80

BENCHMARK 7

EAST BOLT ON FIRE HYDRANT ON SOUTHWEST CORNER OF THE WEST ENTRANCE TO COSTCO AND 159TH STREET, APPROXIMATELY 900 FEET WEST OF CENTERLINE OF RAVINIA AVENUE.

ELEVATION = 688.33



S. LAGRANGE RD

FILE NAME = P:\2011\MS1017_PTB157.5_IL7_US6_159th_Lochner\CADD\Shets\40-0160L72-sht-align.01.dgn
 PLOT SCALE = 1"=40'
 USER NAME =



2600 Warrenville Road, Suite 203, Downers Grove, IL 60515-1761
 630.705.0110 voice, 630.839.2566 fax
 www.mps-il.com

MILLENNIA PROFESSIONAL SERVICES

DESIGNED - TVN	REVISED -
DRAWN - CJD	REVISED -
CHECKED - RPD	REVISED -
DATE - 2/10/2014	REVISED -

**STATE OF ILLINOIS
 DEPARTMENT OF TRANSPORTATION**

**US RTE 6 (159TH STREET)
 ALIGNMENT, TIES AND BENCHMARKS**

SCALE: SHEET NO. 1 OF 5 SHEETS

F.A.P. RTE.	SECTION	COUNTY	TOTAL SHEETS	SHEET NO.
315	2014-010DTR	COOK	207	34
CONTRACT NO.			60X92	

FED. ROAD DIST. NO. 1 ILLINOIS FED. AID PROJECT