

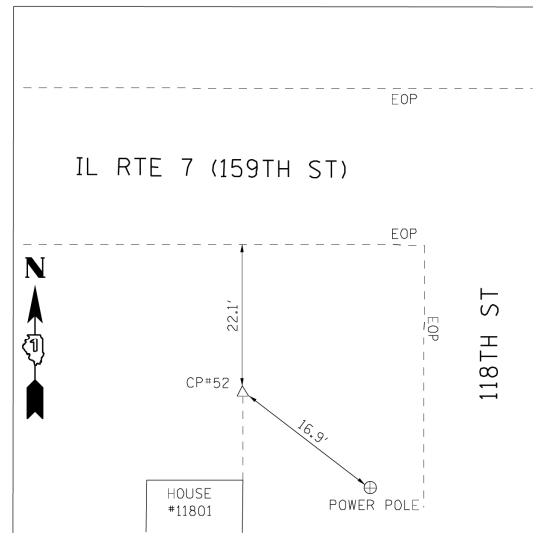
**CONTROL POINT #701**

SET REBAR

STA. 282+80.32, 20.00' RT.

N 1797227.136

E 1100505.239



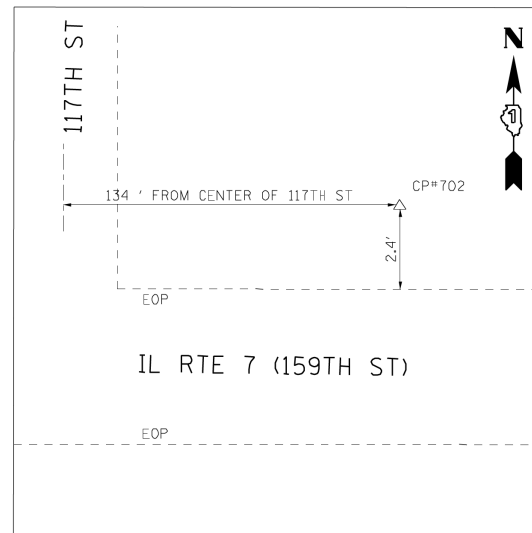
**CONTROL POINT #52**

FOUND REBAR  
106' +/- WEST OF 118TH CL

STA. 288+36.34, 35.89' RT.

N 1797228.142

E 1101061.483



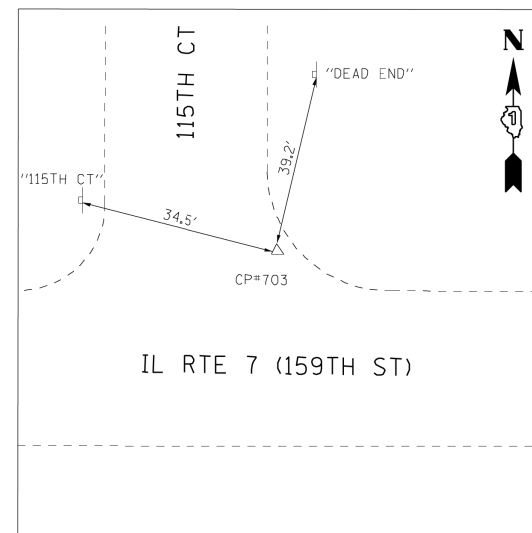
**CONTROL POINT #702**

SET REBAR

STA. 297+39.34, 15.29' LT.

N 1797306.739

E 1101962.512



**CONTROL POINT #703**

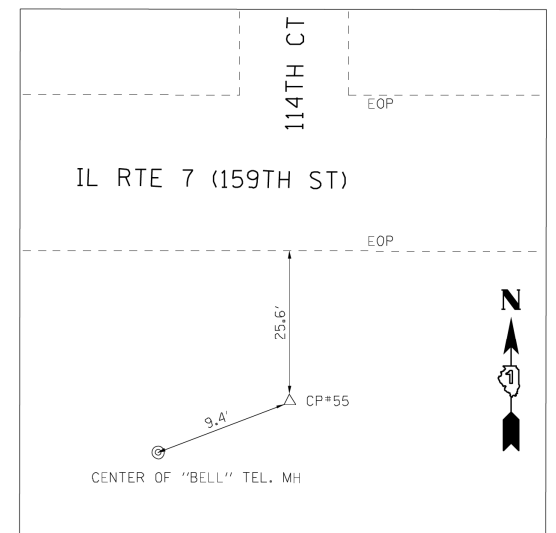
SET MAG NAIL

STA. 305+86.13, 19.50' LT.

N 1797336.674

E 1102808.786

ELEV. 697.59



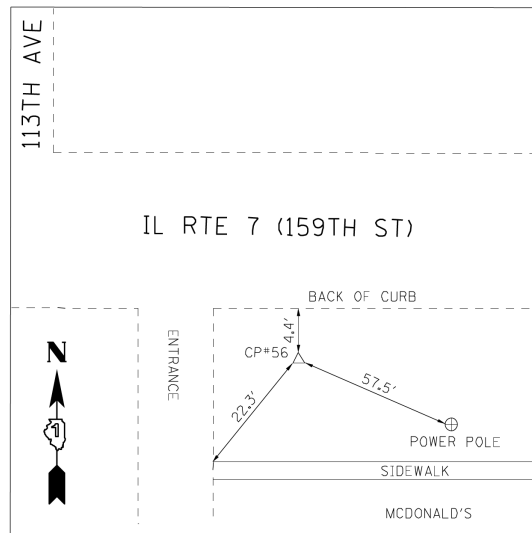
**CONTROL POINT #55**

FOUND 60d SPIKE

STA. 312+55.24, 38.99' RT.

N 1797298.342

E 1103479.348



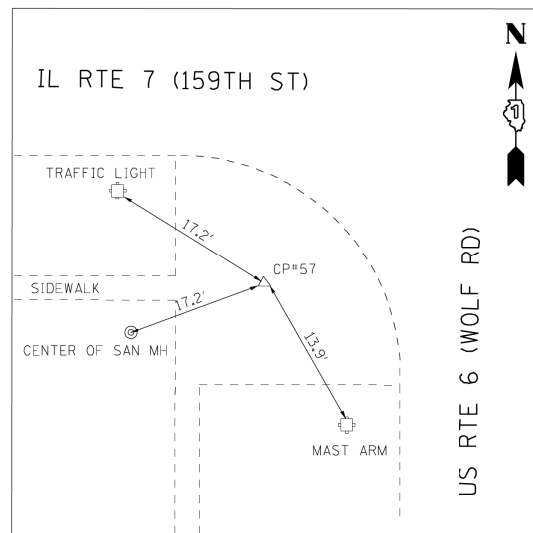
**CONTROL POINT #56**

FOUND 60d SPIKE

STA. 323+61.77, 37.39' RT.

N 1797332.881

E 1104585.338



**CONTROL POINT #57**

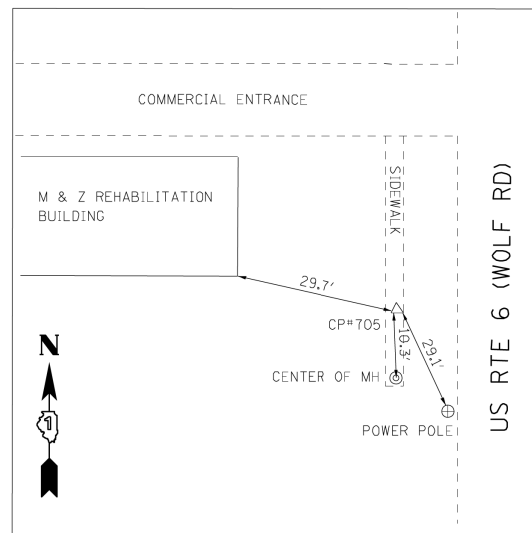
FOUND CUT CROSS IN CONCRETE SIDEWALK

STA. 328+44.24, 59.15' RT.

N 1797325.488

E 1105068.241

ELEV. 714.06



**CONTROL POINT #705**

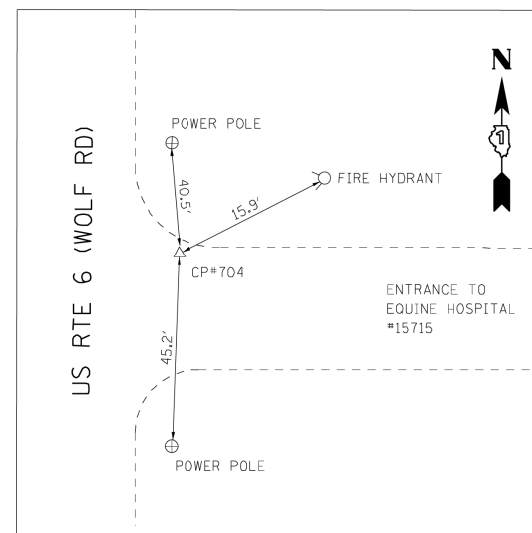
SET MAG NAIL IN HMA SIDEWALK  
650' +/- SOUTH OF 159TH ST CL

STA. 13+52.36, 59.96' LT.

N 1796737.140

E 1105071.793

ELEV. 718.70



**CONTROL POINT #704**

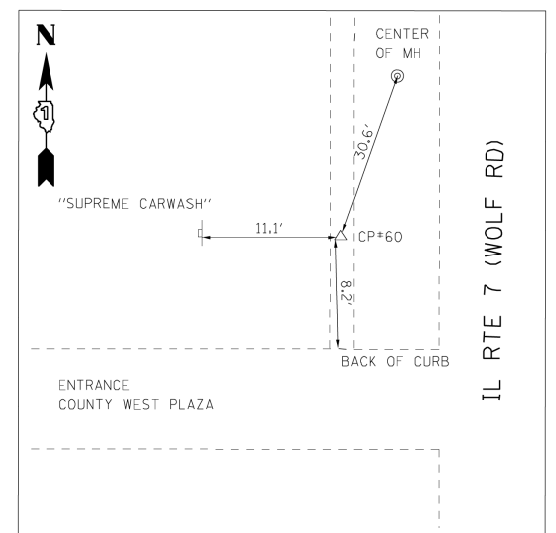
SET MAG NAIL IN HMA ENTRANCE  
215' +/- SOUTH OF 157TH ST CL

STA. 33+64.92, 25.28' RT.

N 1798751.155

E 1105102.093

ELEV. 701.82



**CONTROL POINT #60**

FOUND MAG NAIL IN HMA SIDEWALK  
487' +/- NORTH OF 159TH ST CL

STA. 24+86.94, 55.76' LT.

N 1797871.232

E 1105046.049

ELEV. 711.26

P:\2011\MS1017\_PTB157.5\_IL7\_US6\_159th\_Lochner\CADD\Shsta\41-D160L72-sh-t-align-.02.dgn  
SCALE = 1"=40'  
USER NAME =



2600 Warrenville Road, Suite 203, Downers Grove, IL 60515-1761  
630.705.0110 voice, 630.839.2566 fax  
www.mps-il.com

MILLENNIA PROFESSIONAL SERVICES

DESIGNED - TVN	REVISED -
DRAWN - CJD	REVISED -
CHECKED - RPD	REVISED -
DATE - 2/10/2014	REVISED -

STATE OF ILLINOIS  
DEPARTMENT OF TRANSPORTATION

US RTE 6 (159TH STREET)  
ALIGNMENT, TIES AND BENCHMARKS

SCALE: SHEET NO. 2 OF 5 SHEETS

F.A.P. RTE. 315	SECTION 2014-01ODTR	COUNTY COOK	TOTAL SHEETS 207	SHEET NO. 35
CONTRACT NO. 60X92				

FED. ROAD DIST. NO. 1 ILLINOIS FED. AID PROJECT