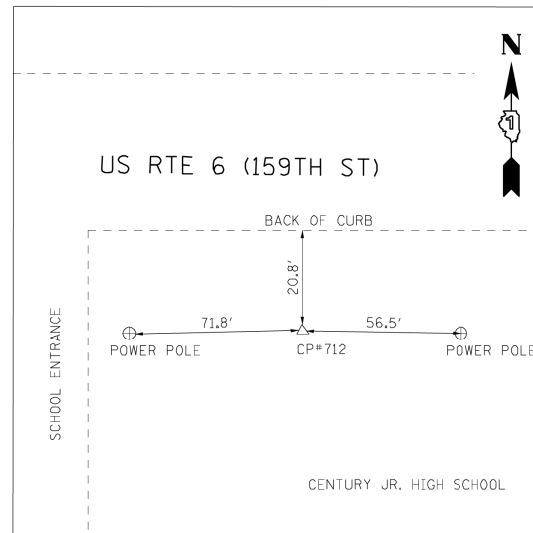


**CONTROL POINT #61**

FOUND MAG NAIL IN HMA APRON  
708' +/- EAST OF WOLF ROAD CL

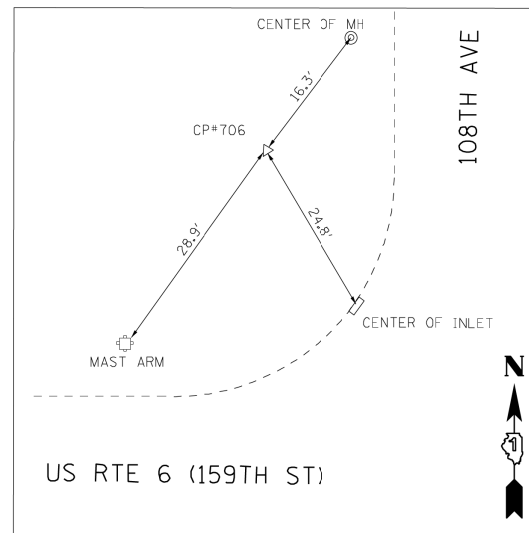
STA. 335+01.44, 40.85' RT.  
N 1797363.343  
E 1105724.602  
ELEV. 709.26



**CONTROL POINT #712**

SET REBAR  
590' +/- WEST OF 108TH AVE CL

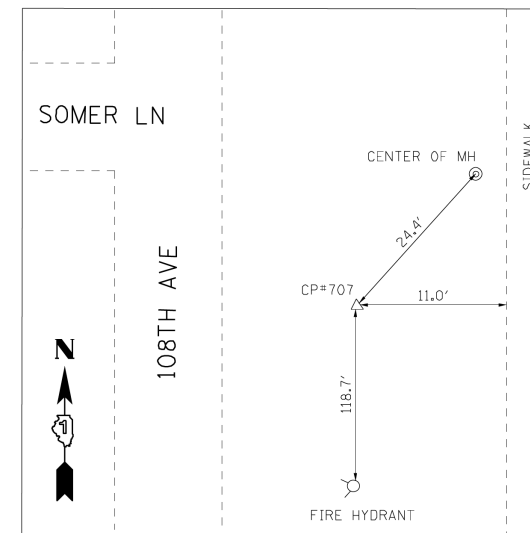
STA. 349+34.18, 43.33' RT.  
N 1797403.515  
E 1107156.784



**CONTROL POINT #706**

SET REBAR

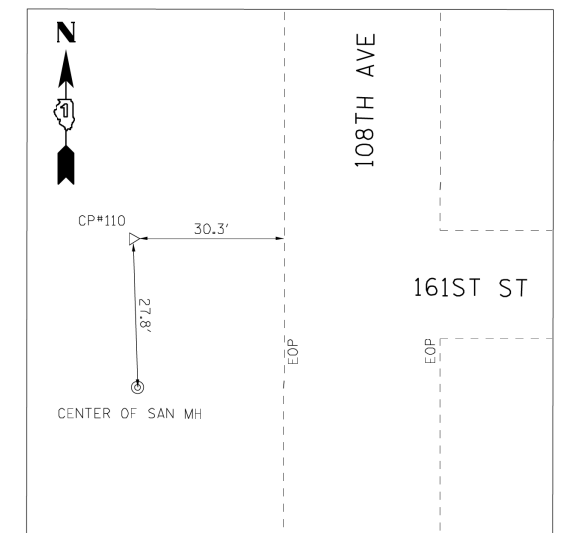
STA. 354+75.44, 74.05' LT.  
N 1797536.959  
E 1107694.312



**CONTROL POINT #707**

SET REBAR  
85' +/- SOUTH OF SOMER LN CL

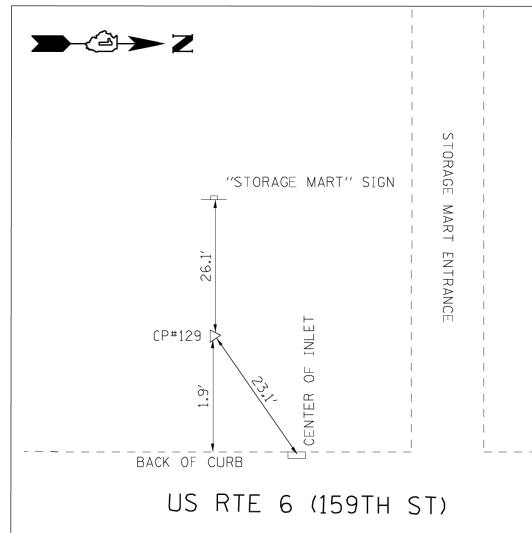
STA. 30+93.88, 42.26' RT.  
N 1798559.014  
E 1107751.859



**CONTROL POINT #110**

FOUND REBAR  
13' +/- NORTH OF 161ST ST CL

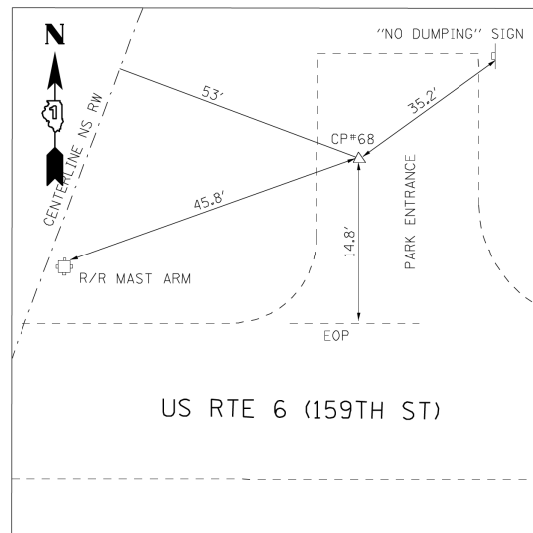
STA. 7+12.20, 42.21' LT.  
N 1796175.880  
E 1107735.775



**CONTROL POINT #129**

FOUND REBAR  
345' +/- WEST OF INTERSECTION NSRW CL  
& 159TH ST CL

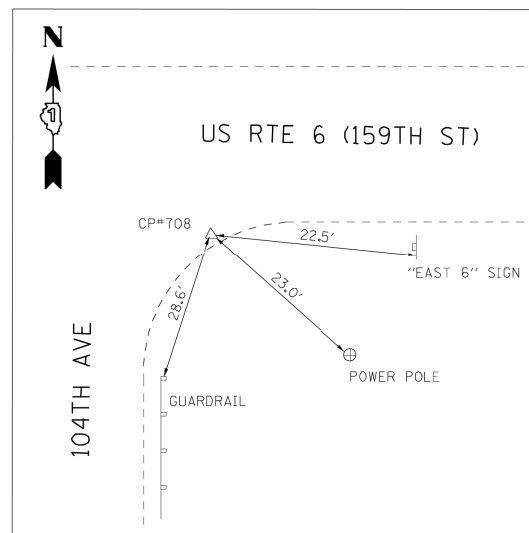
STA. 366+21.91, 28.03' LT.  
N 1797524.555  
E 1108841.670



**CONTROL POINT #68**

FOUND MAG NAIL IN HMA ENTRANCE

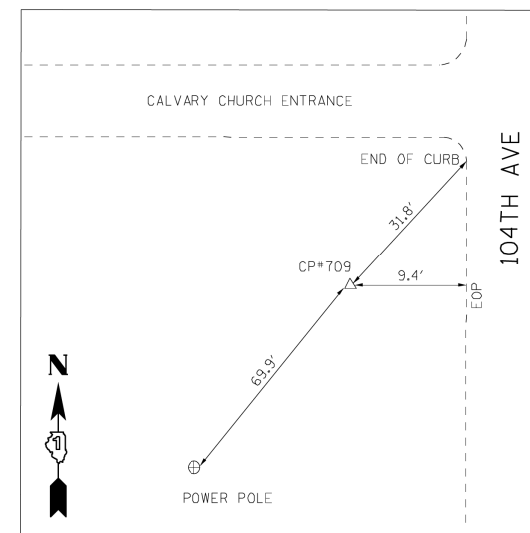
STA. 370+31.24, 30.48' LT.  
N 1797539.003  
E 1109250.757  
ELEV. 694.74



**CONTROL POINT #708**

SET MAG NAIL IN HMA SHOULDER

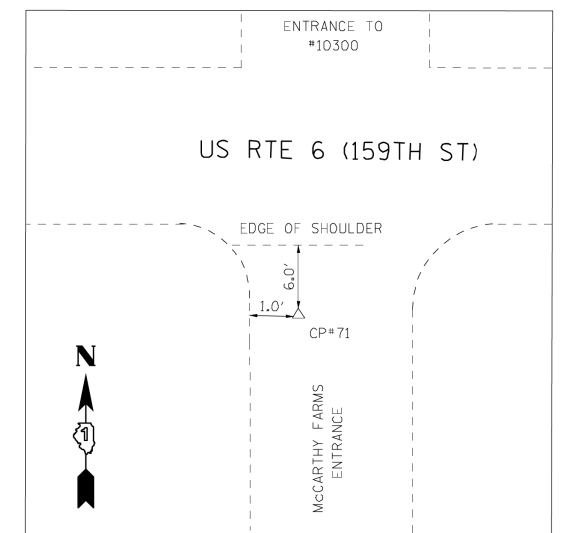
STA. 382+16.06, 29.96' RT.  
N 1797513.259  
E 1110436.823  
ELEV. 686.33



**CONTROL POINT #709**

SET REBAR  
1285' +/- SOUTH OF 159TH ST CL

STA. 7+14.99, 29.66' LT.  
N 1796256.362  
E 1110388.346



**CONTROL POINT #71**

FOUND MAG NAIL IN HMA ENTRANCE

STA. 391+53.77, 21.39 RT.  
N 1797548.919  
E 1111373.900  
ELEV. 687.46

P:\2011\MS11017\_P1B157.5\_IL7\_US6\_159th\_Lochner\CADD\Shets\42-D160L72-sht-01.dgn  
FILE NAME =  
PLOT SCALE =  
USER NAME =



2600 Warrenville Road, Suite 203, Downers Grove, IL 60515-1761  
630.705.0110 voice, 630.839.2566 fax  
www.mps-il.com

MILLENNIA PROFESSIONAL SERVICES

DESIGNED - TVN	REVISED -
DRAWN - CJD	REVISED -
CHECKED - RPD	REVISED -
DATE - 2/10/2014	REVISED -

STATE OF ILLINOIS  
DEPARTMENT OF TRANSPORTATION

US RTE 6 (159TH STREET)  
ALIGNMENT, TIES AND BENCHMARKS

SCALE: SHEET NO. 3 OF 5 SHEETS

F.A.P. RTE. 315	SECTION 2014-O1ODTR	COUNTY COOK	TOTAL SHEETS 207	SHEET NO. 36
CONTRACT NO. 60X92				
FED. ROAD DIST. NO. 1 ILLINOIS FED. AID PROJECT				

P:\2011\MS11017\_P1B157.5\_IL7\_US6\_159th\_Lochner\CADD\Shets\42-D160L72-sht-01.dgn